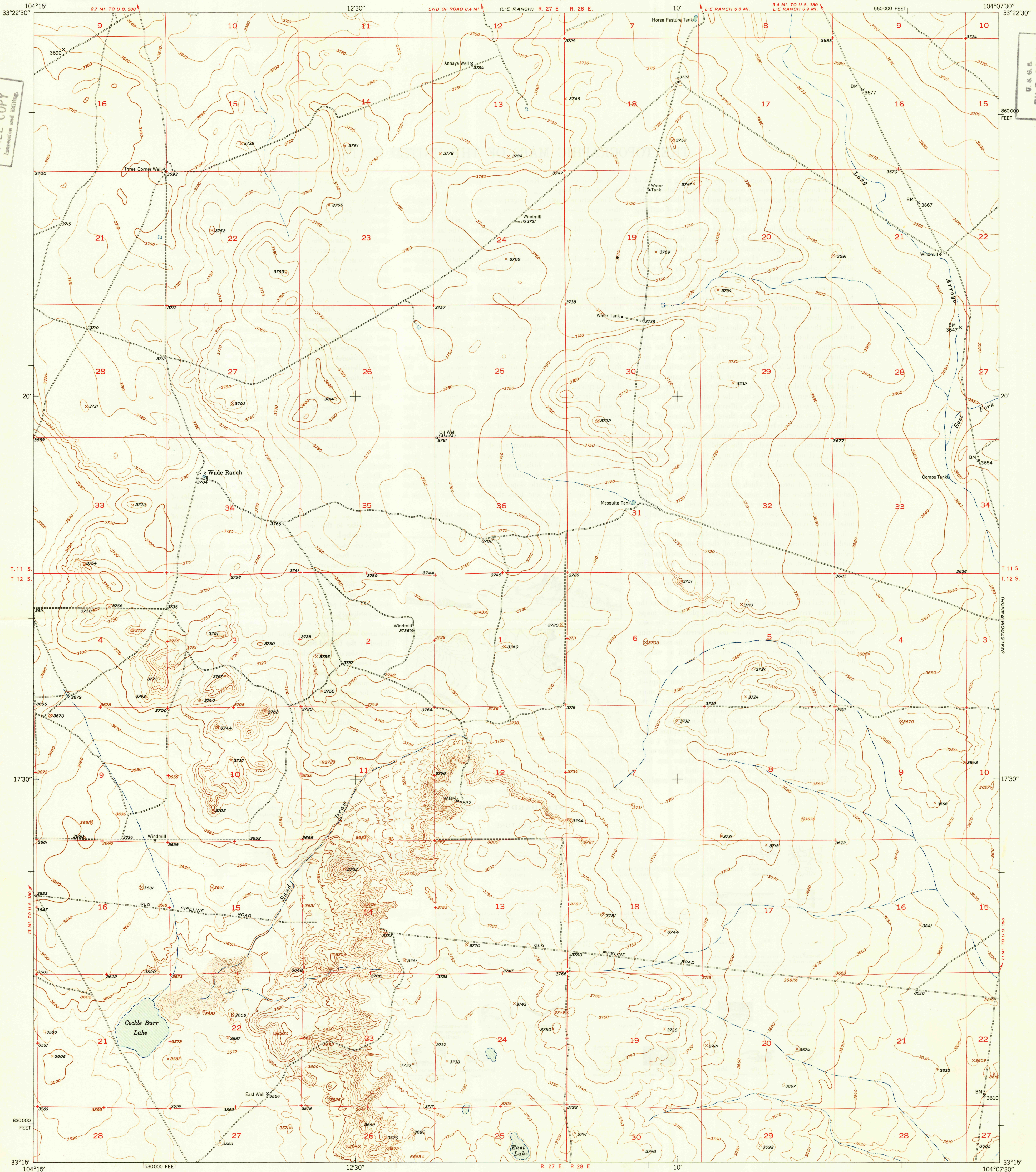


U.S.G.S.  
FILE COPY  
Inspection and Editing

U.S.G.S.  
FILE COPY  
Inspection and Editing



T. 11 S.  
T. 12 S.

T. 11 S.  
T. 12 S.

17°30'

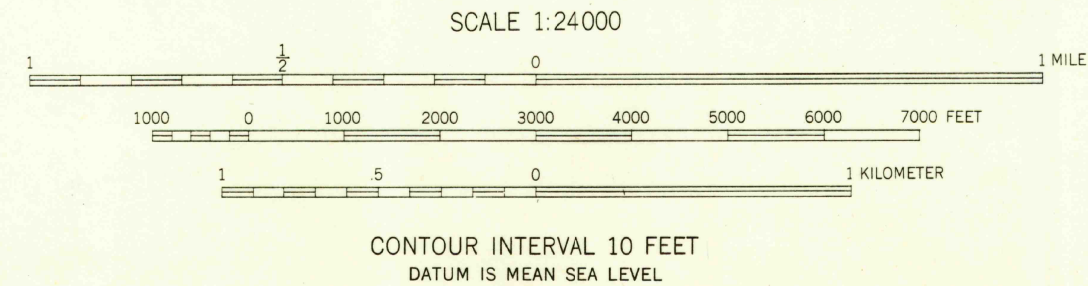
17°30'

33°15'

33°15'

Mapped, edited, and published by the Geological Survey  
Control by USGS and USC&GS  
Culture and drainage in part compiled from  
aerial photographs taken October 1947  
Topography by plane-table methods, 1949  
Polyconic projection, 1927 North American datum  
10,000-foot grid based on New Mexico coordinate system,  
east zone  
Unchecked elevations are shown in brown

TRUE NORTH  
MAGNETIC NORTH  
APPROXIMATE MEAN  
DECLINATION, 1949



ROAD CLASSIFICATION  
HARD-SURFACE ALL WEATHER ROADS  
Heavy-duty ——— LEANE CLANE  
Medium-duty ——— LEANE CLANE  
Loose-surface, graded, or narrow hard-surface - - - -  
DRY WEATHER ROADS  
Improved dirt - - - -  
Unimproved dirt - - - -  
U. S. Route  
State Route

USGS  
Historical File  
Topographic Division  
U.S.G.S.  
FILE COPY  
Inspection and Editing

WADE RANCH, N. MEX.  
N3315-W10407.5/7.5  
EDITION OF 1949

THIS MAP COMPLIES WITH NATIONAL MAP ACCURACY STANDARDS  
FOR SALE BY U. S. GEOLOGICAL SURVEY, DENVER, COLORADO OR WASHINGTON 25, D. C.

NOV 9 1949

2075