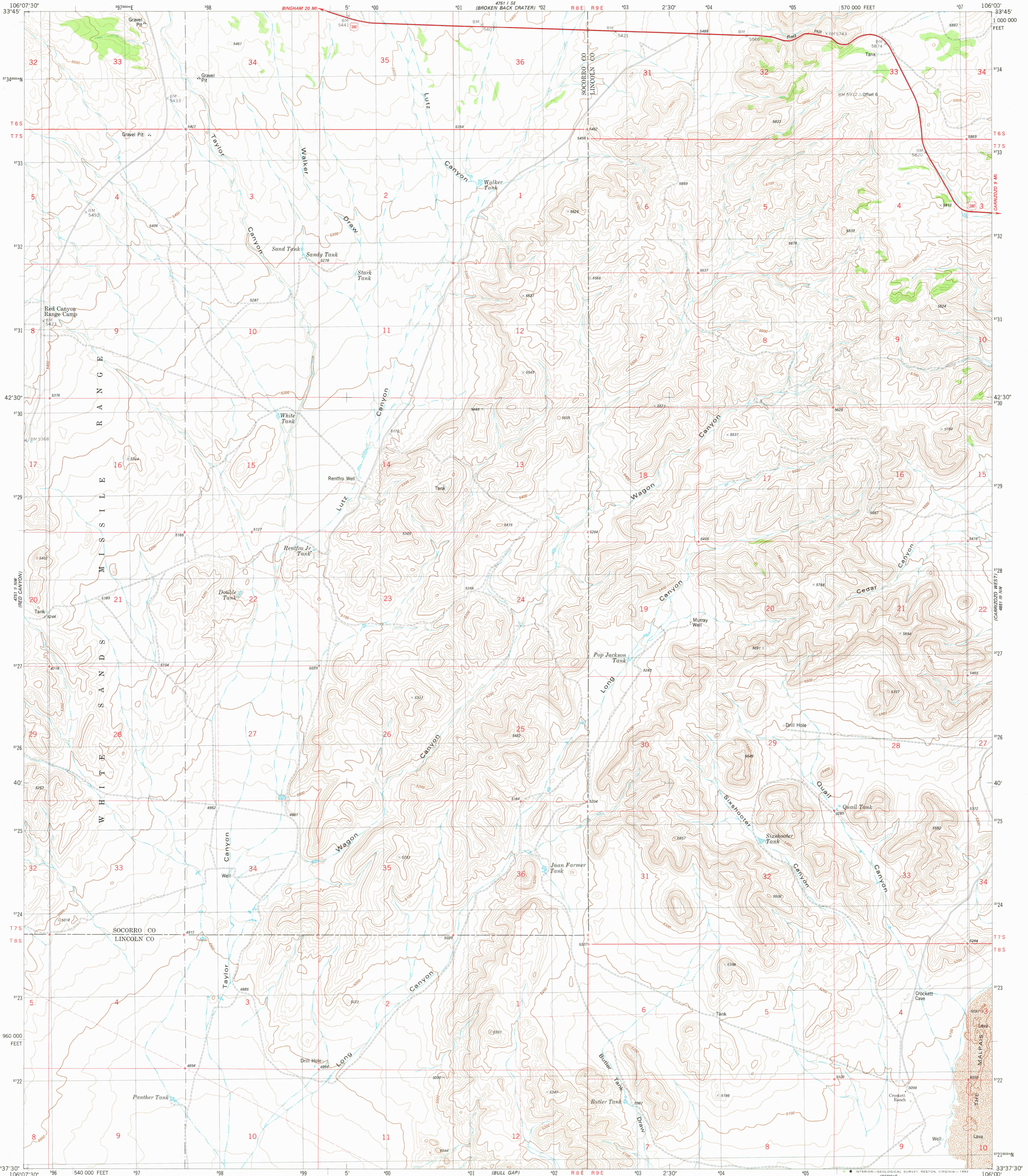
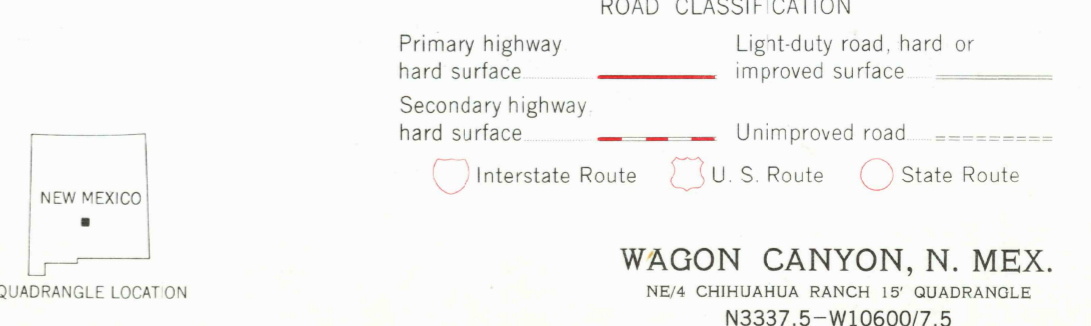
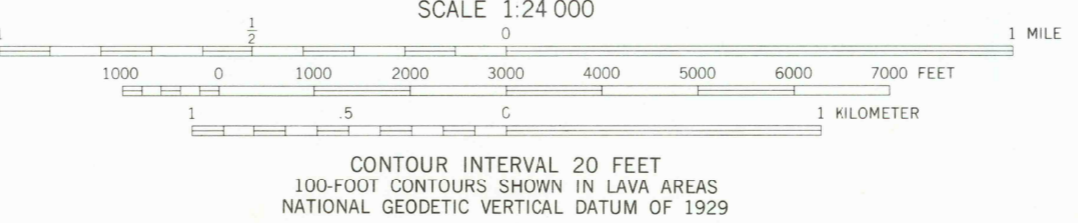
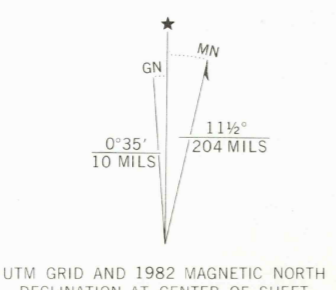


UNITED STATES
DEPARTMENT OF THE INTERIOR
GEOLOGICAL SURVEY

WAGON CANYON QUADRANGLE
NEW MEXICO
7.5 MINUTE SERIES (TOPOGRAPHIC)
NE 1/4 CHIHUAHUA RANCH 15' QUADRANGLE



Mapped, edited, and published by the Geological Survey
Control by USGS and NOS/NOAA
Topography by photogrammetric methods from aerial photographs
taken 1972. Field checked 1975. Map edited 1982
Projection and 10,000-foot grid ticks: New Mexico
coordinate system, central zone (transverse Mercator)
1000-meter Universal Transverse Mercator grid, zone 13
1927 North American datum
To place on the predicted North American Datum 1983
move the projection lines 5 meters south and
51 meters east as shown by dashed center ticks
Fine red dashed lines indicate selected fence lines
There may be private inholdings within the boundaries of
the National or State reservations shown on this map



THIS MAP COMPLIES WITH NATIONAL MAP ACCURACY STANDARDS
FOR SALE BY U.S. GEOLOGICAL SURVEY, DENVER, COLORADO 80225, OR RESTON, VIRGINIA 22092
A FOLDER DESCRIBING TOPOGRAPHIC MAPS AND SYMBOLS IS AVAILABLE ON REQUEST

RETURN TO:
USGS WMD HISTORICAL MAP ARCHIVES
1982
DMA 4751 II NE-SERIES V881

MAR 1 8 1982