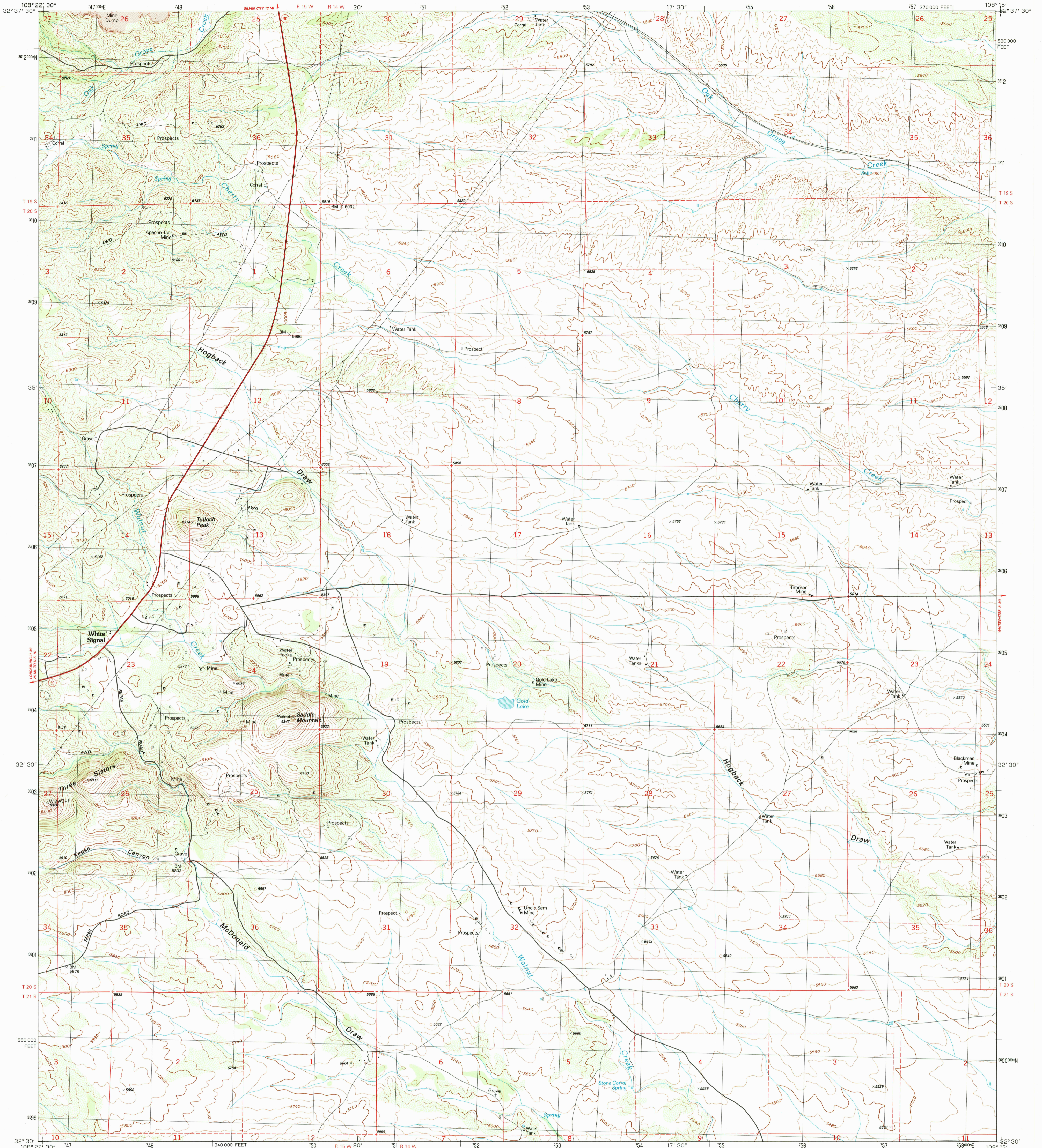
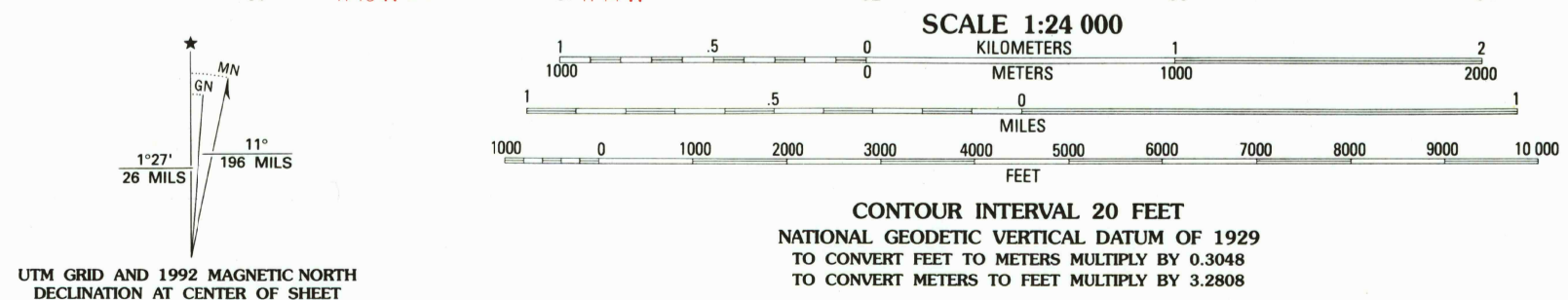


DEPARTMENT OF THE INTERIOR
UNITED STATES GEOLOGICAL SURVEY

WHITE SIGNAL QUADRANGLE
NEW MEXICO—GRANT CO.
7.5 MINUTE SERIES (TOPOGRAPHIC)



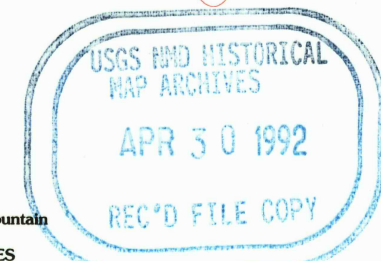
Produced by the United States Geological Survey
Control by USGS and NOS/NOAA
Compiled from aerial photographs taken 1987
Field checked 1988. Map edited 1992
North American Datum of 1927 (NAD 27). Projection and 10 000-foot grid ticks: New Mexico Coordinate System, west zone (Lambert Conformal Conic). 1000-meter Universal Transverse Mercator grid, zone 12
The difference between NAD 27 and North American Datum of 1983 (NAD 83) for 7.5 minute intersections is given in USGS Bulletin 1875. The NAD 83 is shown by dashed corner ticks
Fine red dashed lines indicate selected fence lines



SCALE 1:24 000
NATIONAL GEODETIC VERTICAL DATUM OF 1929
TO CONVERT FEET TO METERS MULTIPLY BY 0.3048
TO CONVERT METERS TO FEET MULTIPLY BY 3.2808

ROAD CLASSIFICATION
Primary highway, hard surface
Secondary highway, hard surface
Light-duty road, hard or improved surface
Unimproved road
Interstate Route U. S. Route State Route

1	2	3	1 Wind Mountain
2	3	4	2 Tyrone
3	4	5	3 Hurley West
4	5	6	4 Barro Peak
5	6	7	5 Whitewater
6	7	8	6 C Bar Ranch
7	8		7 Werney Hill
8			8 Cow Springs Mountain



WHITE SIGNAL, N. MEX.
32108-E3-TF-024
1992

THIS MAP COMPLIES WITH NATIONAL MAP ACCURACY STANDARDS
FOR SALE BY U.S. GEOLOGICAL SURVEY
DENVER, COLORADO 80225 OR RESTON, VIRGINIA 22092
A FOLDER DESCRIBING TOPOGRAPHIC MAPS AND SYMBOLS IS AVAILABLE ON REQUEST

DMA 4349 III SE-SERIES V881