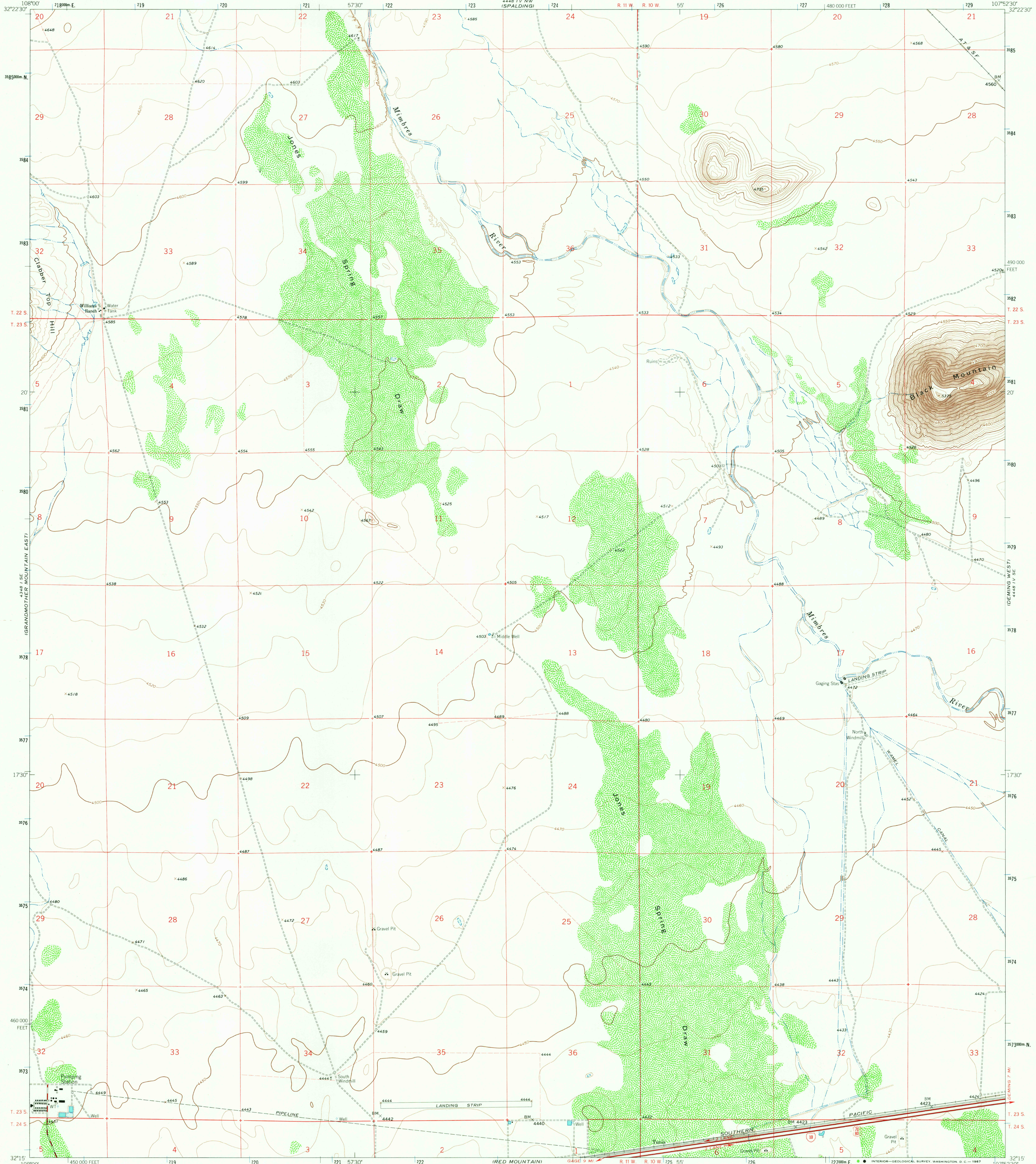


ANTelope Hill

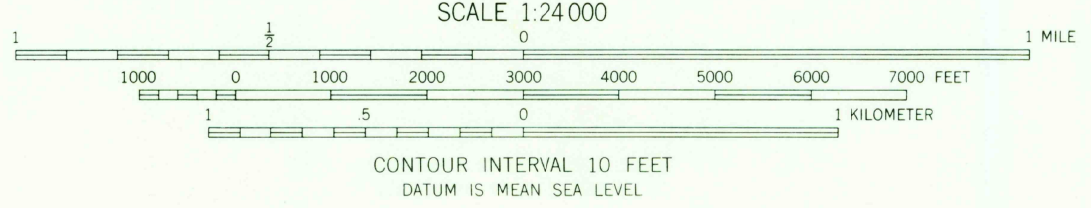
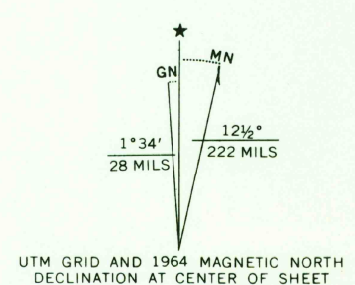
UNITED STATES
DEPARTMENT OF THE INTERIOR
GEOLOGICAL SURVEY

WILLIAMS RANCH QUADRANGLE
NEW MEXICO-LUNA CO.
7.5 MINUTE SERIES (TOPOGRAPHIC)

1000' RIDGE



Mapped, edited, and published by the Geological Survey
Control by USGS and USC&GS
Topography by photogrammetric methods from aerial photographs taken 1962. Field checked 1964.
Polyconic projection, 1927 North American datum 10,000-foot grid based on New Mexico coordinate system, west zone 1000-meter Universal Transverse Mercator grid ticks, zone 13, shown in blue.
Fine red dashed lines indicate selected fence lines.



USGS
Historical File
Topographic Division

ROAD CLASSIFICATION

Heavy-duty	Light-duty
Medium-duty	Unimproved dirt
Interstate Route	U.S. Route

THIS MAP COMPLIES WITH NATIONAL MAP ACCURACY STANDARDS
FOR SALE BY U.S. GEOLOGICAL SURVEY, DENVER, COLORADO 80225, OR WASHINGTON, D.C. 20242
A FOLDER DESCRIBING TOPOGRAPHIC MAPS AND SYMBOLS IS AVAILABLE ON REQUEST



U.S.G.S.
FILE COPY
TOPOGRAPHIC DIVISION

WILLIAMS RANCH, N. MEX.
N3215-W10752.5/7.5

1964

AMS 4448 IV SW-SERIES V881

2755
Plan 400
MAR 16 1967