

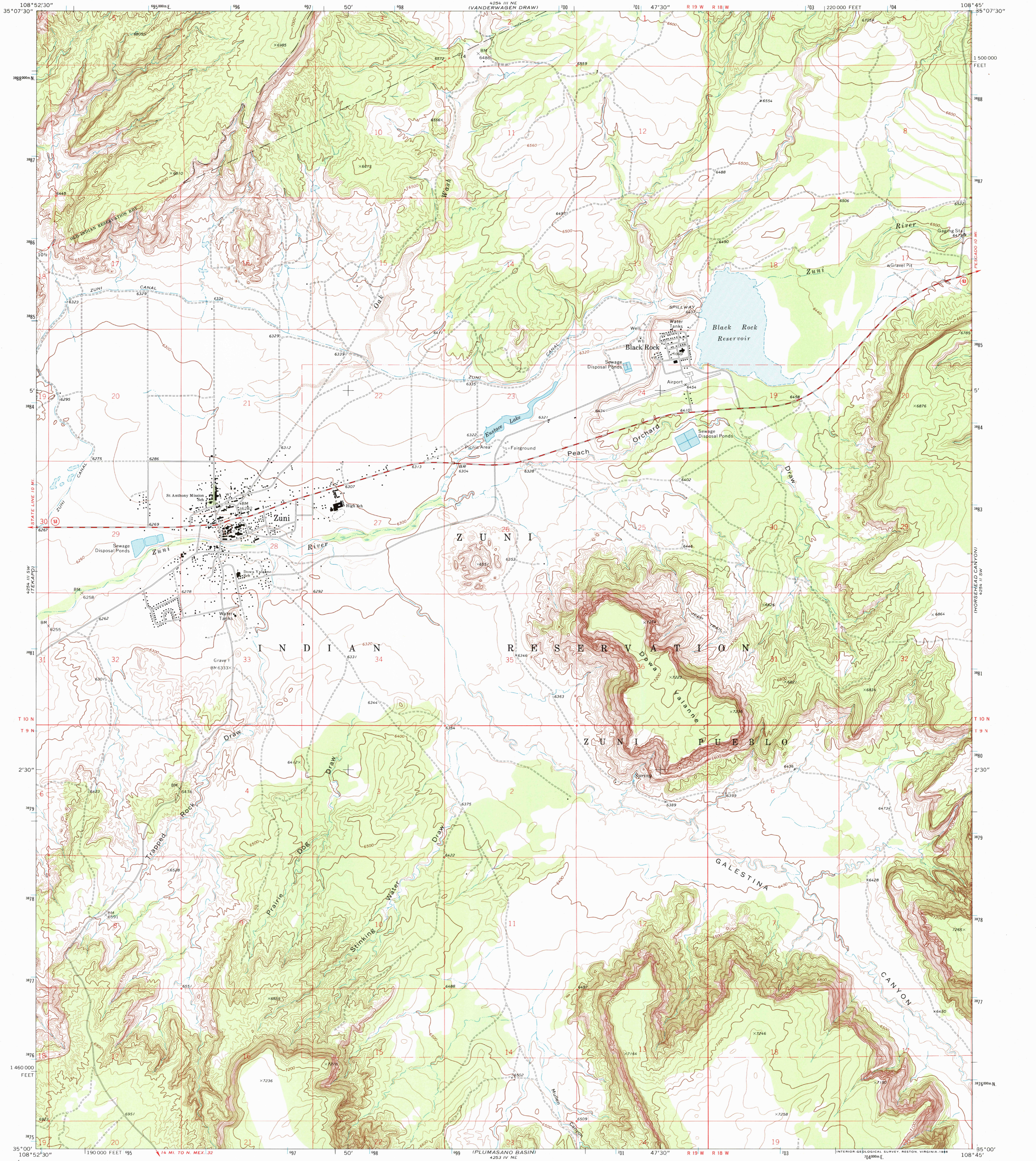
5000' (1:250,000)
G.P. CONTROL (M.M.)



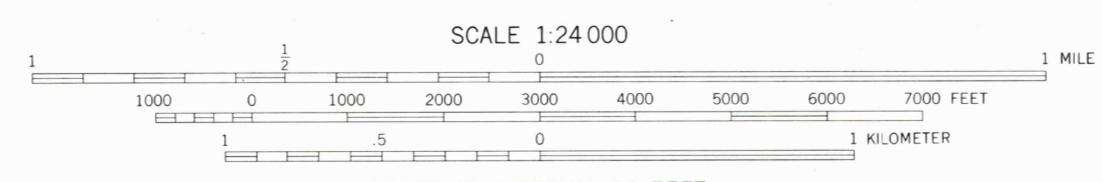
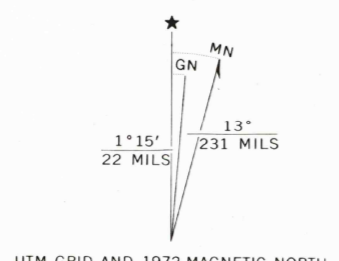
U.S. DEPARTMENT OF THE INTERIOR
U.S. GEOLOGICAL SURVEY

ZUNI QUADRANGLE
NEW MEXICO—MC KINLEY CO.
7.5 MINUTE SERIES (TOPOGRAPHIC)

5000' (1:250,000)
G.P. CONTROL (M.M.)
UPPER GALESTINA CANYON



Mapped, edited, and published by the Geological Survey
Control by USGS and NOS/NOAA
Topography by photogrammetric methods from aerial photographs taken 1971. Field checked 1972
Projection and 10,000-foot grid ticks: New Mexico coordinate system, west zone (transverse Mercator)
1000-meter Universal Transverse Mercator grid ticks, zone 12, shown in blue. 1927 North American Datum
To place on the predicted North American Datum 1983 move the projection lines 57 meters east as shown by dashed corner ticks



ROAD CLASSIFICATION

Primary highway, hard surface	Light-duty road, hard or improved surface
Secondary highway, hard surface	Unimproved road
Interstate Route	U. S. Route
	State Route

THIS MAP COMPLIES WITH NATIONAL MAP ACCURACY STANDARDS
FOR SALE BY U.S. GEOLOGICAL SURVEY, P.O. BOX 25286, DENVER, COLORADO 80225
A FOLDER DESCRIBING TOPOGRAPHIC MAPS AND SYMBOLS IS AVAILABLE ON REQUEST

RECEIVED
APR 30 2001
HISTORICAL MAP ARCHIVES

ZUNI, N. MEX.
35108-A7-TF-024
1972

DMA 4254 III SE-SERIES V881

