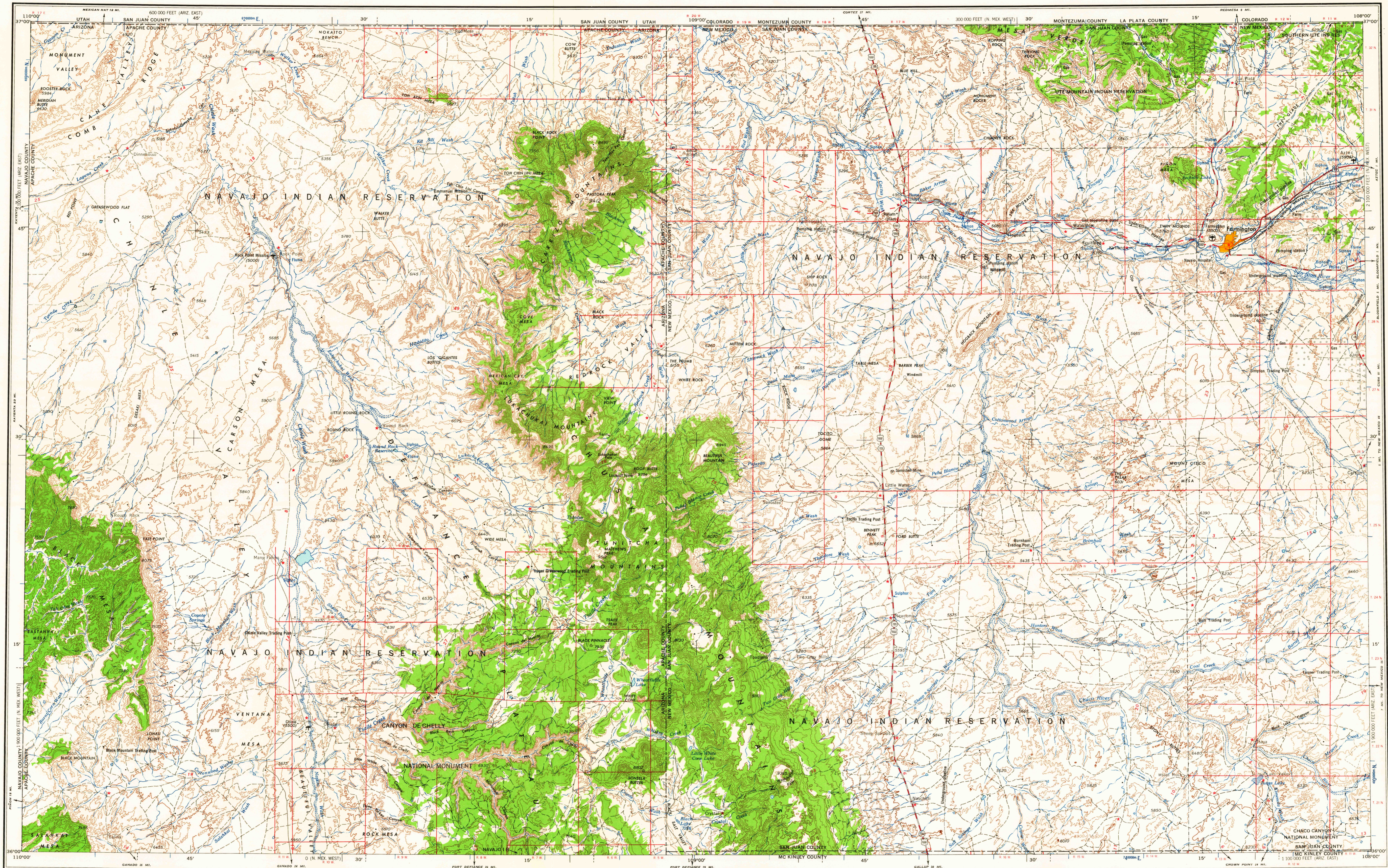


SHIPROCK



Prepared by the Army Map Service (BESX), Corps of Engineers, U.S. Army, Washington, D.C. Compiled in 1955 by photogrammetric methods. Horizontal and vertical control by USGS and USC&GS. Aerial photography 1954, field annotated 1954. Limited revision by U.S. Geological Survey 1963.

100,000-foot grids based on New Mexico coordinate system, west zone and Arizona coordinate system, east zone

10,000-meter Universal Transverse Mercator grid ticks, zone 12, shown in blue

LEGEND

ROAD DATA 1954 PARTIALLY REVISED 1963
 Figures in red denote approximate distances in miles between stars

POPULATED PLACES

Over 500,000
 100,000 to 500,000
 25,000 to 100,000
 5,000 to 25,000
 1,000 to 5,000
 Less than 1,000

RAILROADS

Standard gauge
 Narrow gauge
 BOUNDARIES
 International
 State
 County
 Park or reservation

LANDMARKS

School, Church, Other
 Spot elevation in feet
 Marsh or swamp
 Intermittent or dry stream
 Power line

ROADS

Hard surface, heavy duty
 More than two lanes wide
 Two lanes wide; Federal route marker
 Hard surface, medium duty
 More than two lanes wide
 Two lanes wide; State route marker
 Improved light duty
 Unimproved dirt
 Trail

Other Symbols

Landplane airport
 Horizontal control point
 Landing area
 Seaplane airport
 Seaplane anchorage
 Woods-bushwood
 Sun Valley

Scale 1:250,000

0 5 10 15 20 25 30 Statute Miles

0 5 10 15 20 25 30 Kilometers

0 5 10 15 20 25 30 Nautical Miles

CONTOUR INTERVAL 200 FEET
 WITH SUPPLEMENTARY CONTOURS AT 100 FOOT INTERVALS
 TRANSVERSE MERCATOR PROJECTION

1960 MAGNETIC DECLINATION FOR THIS SHEET VARIES FROM 14°15' EASTERLY FOR THE CENTER OF THE WEST EDGE TO 13°45' EASTERLY FOR THE CENTER OF THE EAST EDGE. MEAN ANNUAL CHANGE IS 0°02' WESTERLY.

FOR SALE BY U.S. GEOLOGICAL SURVEY, DENVER 25, COLORADO OR WASHINGTON 25, D.C.

LOCATION DIAGRAM FOR NJ 12-12

| | | | | |
|-----------------------|--------------------|--------------------|--------------------|--------------------|
| RICHFIELD NJ 12-4 | SALINA NJ 12-5 | UTAH NJ 12-6 | NI 13-4 | NI 13-5 |
| DEBAR CITY NJ 12-7 | UTAH NJ 12-8 | NI 12-9 | NI 13-7 | NI 13-8 |
| WILEY CANYON NJ 12-10 | ATLICK NJ 12-11 | NI 12-12 | NI 13-10 | NI 13-11 |
| ARIZONA NI 12-1 | NEW MEXICO NI 12-2 | NEW MEXICO NI 12-3 | NEW MEXICO NI 13-2 | NEW MEXICO NI 13-3 |
| WILLIAMS NI 12-4 | WILLIAMS NI 12-5 | WILLIAMS NI 12-6 | WILLIAMS NI 13-4 | WILLIAMS NI 13-5 |

USGS
 Historical File
 Topographic Division

SECTIONIZED TOWNSHIP

| | | | | | |
|----|----|----|----|----|----|
| 6 | 5 | 4 | 3 | 2 | 1 |
| 7 | 8 | 9 | 10 | 11 | 12 |
| 18 | 17 | 16 | 15 | 14 | 13 |
| 19 | 20 | 21 | 22 | 23 | 24 |
| 30 | 29 | 28 | 27 | 26 | 25 |
| 31 | 32 | 33 | 34 | 35 | 36 |

SHIPROCK, NEW MEXICO, ARIZONA

1954
 LIMITED REVISION 1963

JAN 2 1964

6400