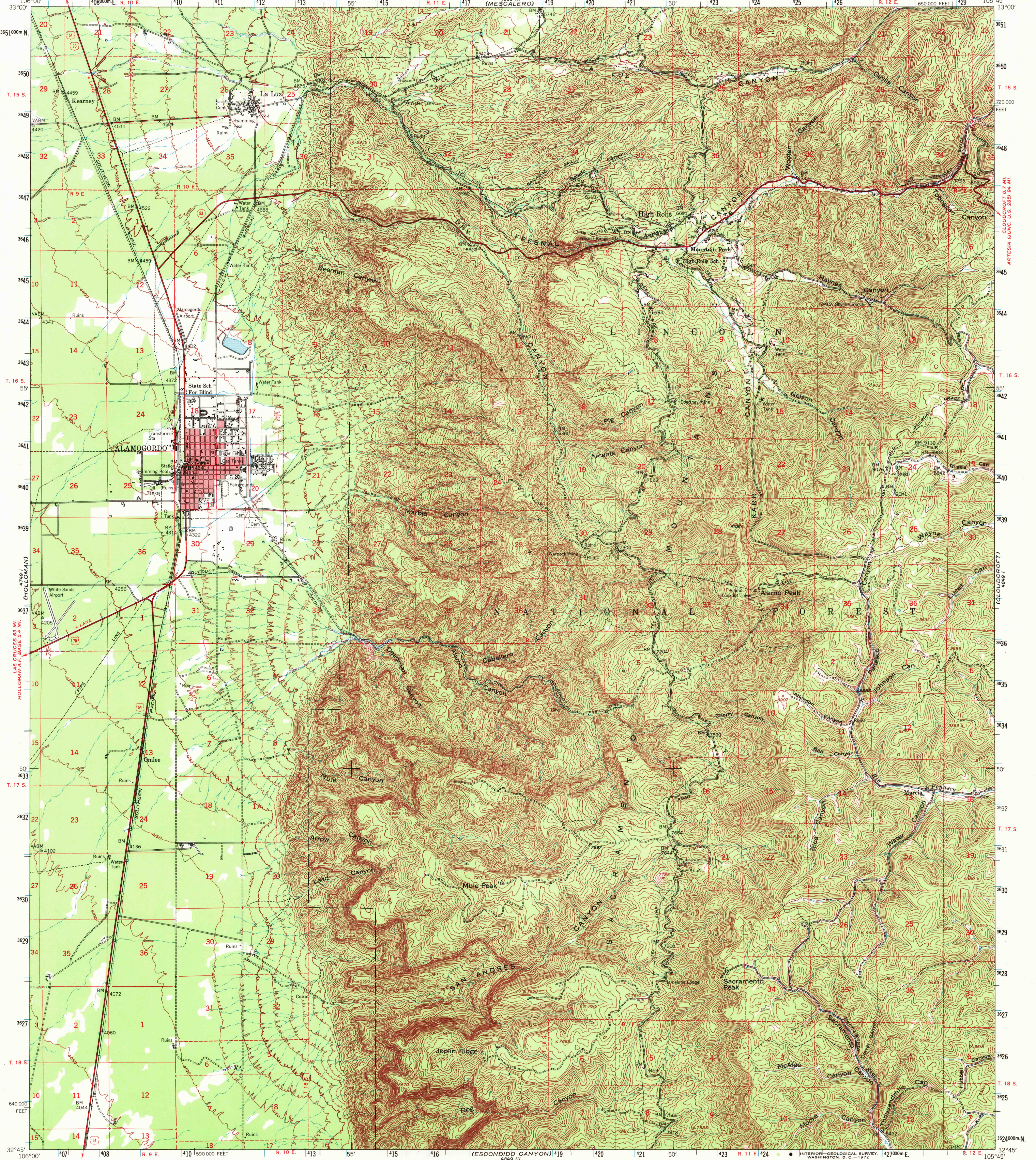


CARRIZO JUNC. U.S. 380 50 MI.
TULAROSA 5.4 MI.

UNITED STATES
DEPARTMENT OF THE INTERIOR
GEOLOGICAL SURVEY

UNITED STATES
DEPARTMENT OF THE ARMY
CORPS OF ENGINEERS

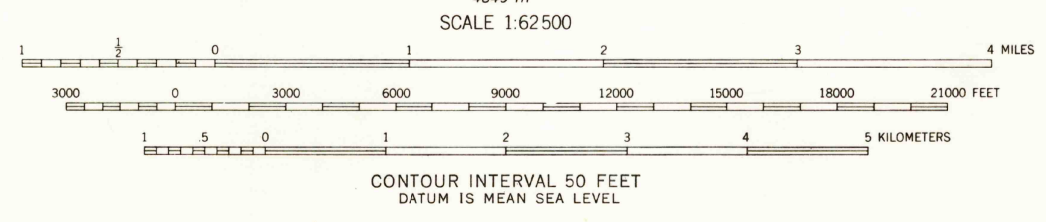
ALAMOGORDO QUADRANGLE
NEW MEXICO—OTERO CO.
15 MINUTE SERIES (TOPOGRAPHIC)



106°00' 33°00' 3651000m N
T. 15 S.
3649
3648
3647
3646
3645
3644
3643
3642
3641
3640
3639
3638
3637
3636
3635
3634
3633
3632
3631
3630
3629
3628
3627
3626
3625
3624000m N
T. 16 S.
55'
T. 17 S.
50'
T. 18 S.
640 000 FEET
32°45'

105°45' 33°00' 3651
T. 15 S.
3650
3648
3645
3644
3642
3641
3640
3639
3638
3636
3634
3632
3631
3630
3629
3628
3627
3626
3625
3624000m N
T. 16 S.
55'
T. 17 S.
50'
T. 18 S.
32°45'

Mapped by the Army Map Service
Published for civil use by the Geological Survey
Control by USGS, USC&GS, and USCE
Topography from aerial photographs by multiplex methods
Aerial photographs taken 1948-1949. Field check 1950
Polyconic projection. 1927 North American datum
10,000-foot grid based on New Mexico coordinate system,
central zone
ORDOGRANDE 27 MI.
EL PASO, TEXAS 75 MI.
Red tint indicates area in which only
landmark buildings are shown
Dashed land lines indicate approximate locations
Unchecked elevations are shown in brown
Locations of all boundaries are approximate
1000-meter Universal Transverse Mercator grid ticks,
zone 13, shown in blue



ROAD CLASSIFICATION

| | |
|-------------|-----------------|
| Heavy-duty | Light-duty |
| Medium-duty | Unimproved dirt |
| U.S. Route | State Route |

CONTOUR INTERVAL 50 FEET
DATUM IS MEAN SEA LEVEL
THIS MAP COMPLIES WITH NATIONAL MAP ACCURACY STANDARDS
FOR SALE BY U. S. GEOLOGICAL SURVEY, DENVER, COLORADO 80225 OR WASHINGTON, D. C. 20242
A FOLDER DESCRIBING TOPOGRAPHIC MAPS AND SYMBOLS IS AVAILABLE ON REQUEST

ALAMOGORDO, N. MEX.
N3245-W10545/15
1950
AMS 4849 IV-SERIES V781

JUL 17 1972

USGS
HISTORICAL FILE
TOPOGRAPHIC DIVISION

3915