

(TULAROSA)

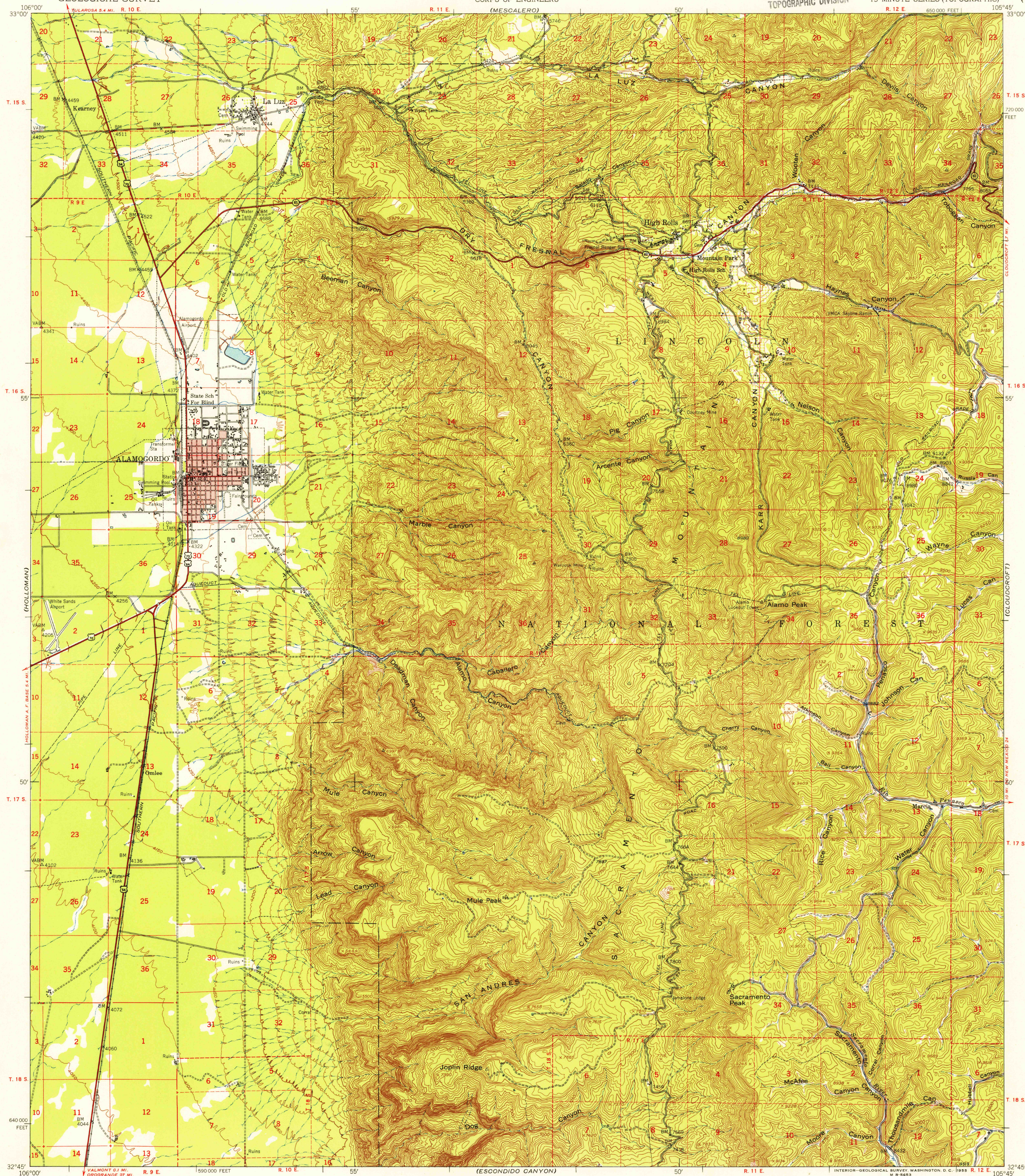
UNITED STATES  
DEPARTMENT OF THE INTERIOR  
GEOLOGICAL SURVEY

UNITED STATES  
DEPARTMENT OF THE ARMY  
CORPS OF ENGINEERS  
(MESCALERO)

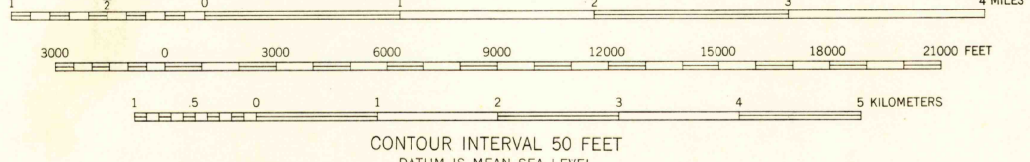
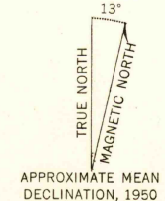
U.S.G.S.  
FILE COPY  
TOPOGRAPHIC DIVISION

ALAMOGORDO QUADRANGLE  
NEW MEXICO—OTERO CO.  
15 MINUTE SERIES (TOPOGRAPHIC)

LINCOLN NATIONAL  
FOREST 1:250,000



Mapped by the Army Map Service  
Published for civil use by the Geological Survey  
Control by USGS, USC&GS, and USCE  
Topography from aerial photographs by multiplex methods  
Aerial photographs taken 1948-1949. Field check 1950  
Polyconic projection. 1927 North American datum  
10,000-foot grid based on New Mexico coordinate system,  
central zone  
Red tint indicates area in which only  
landmark buildings are shown  
Dashed land lines indicate approximate locations  
Unchecked elevations are shown in brown  
Locations of all boundaries are approximate



ROAD CLASSIFICATION

Heavy-duty	4 LANE, 6 LANE	Light-duty
Medium-duty	2 LANE, 4 LANE	Unimproved dirt
U.S. Route		State Route

THIS MAP COMPLIES WITH NATIONAL MAP ACCURACY STANDARDS  
FOR SALE BY U. S. GEOLOGICAL SURVEY, FEDERAL CENTER, DENVER, COLORADO OR WASHINGTON 25, D. C.  
A FOLDER DESCRIBING TOPOGRAPHIC MAPS AND SYMBOLS IS AVAILABLE ON REQUEST

U.S.G.S.  
Historical File  
Topographic Division

ALAMOGORDO, N. MEX.  
N3245-W10545/15

1950 MAR 7 1955

2535