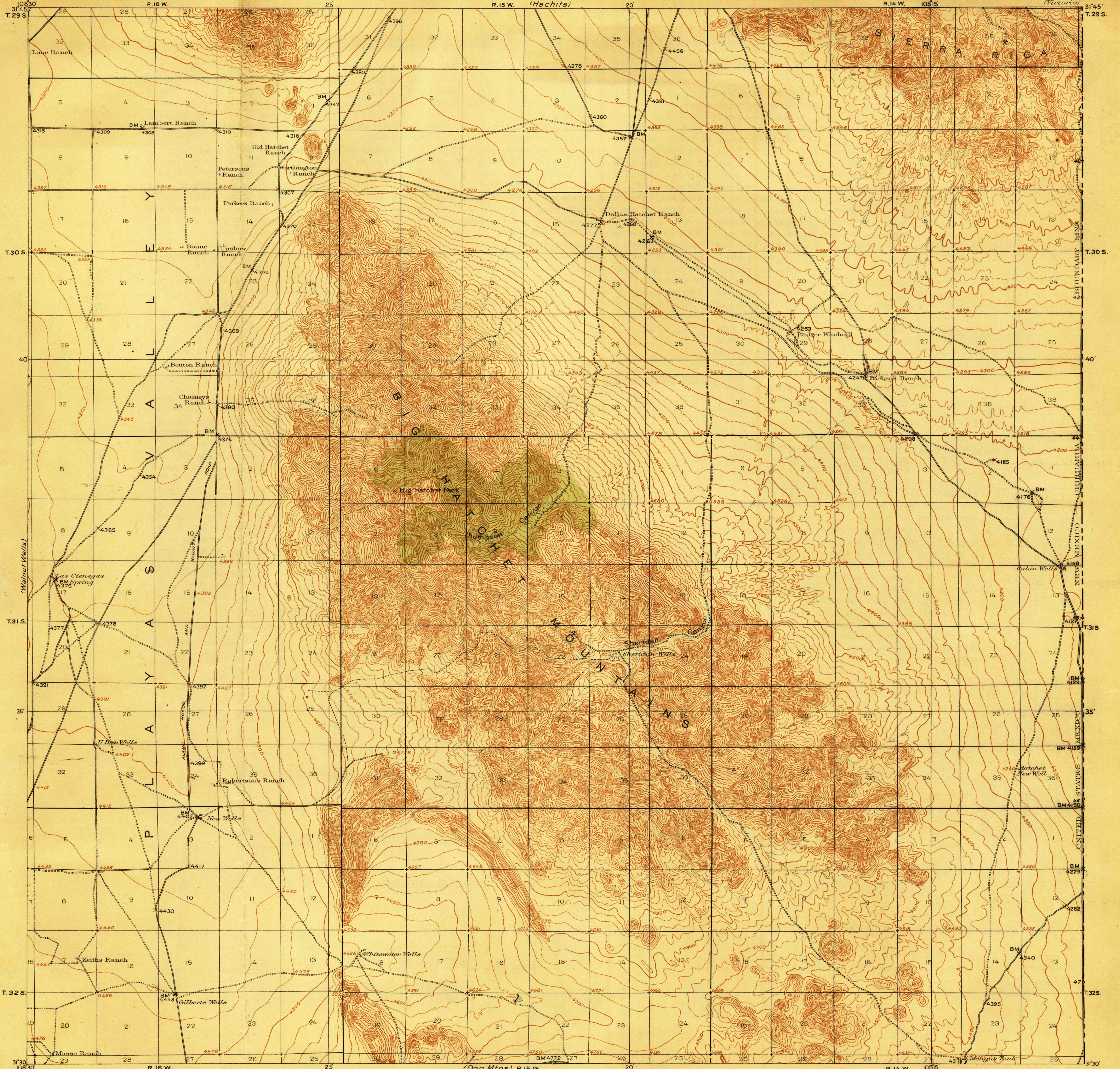


DEPARTMENT OF THE INTERIOR
FRANKLIN K. LANE, SECRETARY
U. S. GEOLOGICAL SURVEY
GEORGE OTIS SMITH, DIRECTOR

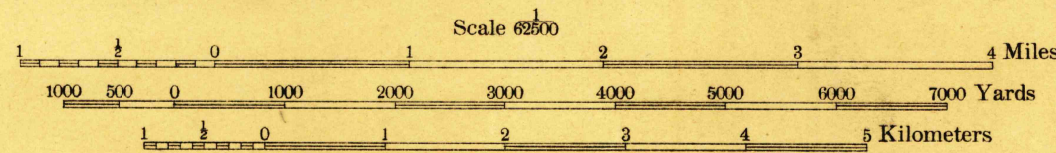
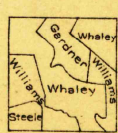
TOPOGRAPHY

WAR DEPARTMENT
CORPS OF ENGINEERS, U. S. ARMY

NEW MEXICO
(GRANT COUNTY)
BIG HATCHET PEAK QUADRANGLE



R. B. Marshall, Chief Geographer.
T. G. Gerding, Geographer in charge.
Topography by C. C. Gardner, R. B. Steele,
F. L. Whaley, and A. C. Williams.
Control by International Boundary Commission.
R. W. Burchard, R. B. Steele, and B. H. Yoakum.
Surveyed in 1917-1918.



Contour interval 25 feet.
Datum is mean sea level.

APPROXIMATE MEAN
DECLINATION, 1917

USGS
Historical File
Topographic Division

Edition of 1918.

DEC 31 1918 2300

BIG HATCHET PEAK,

N. Mex.