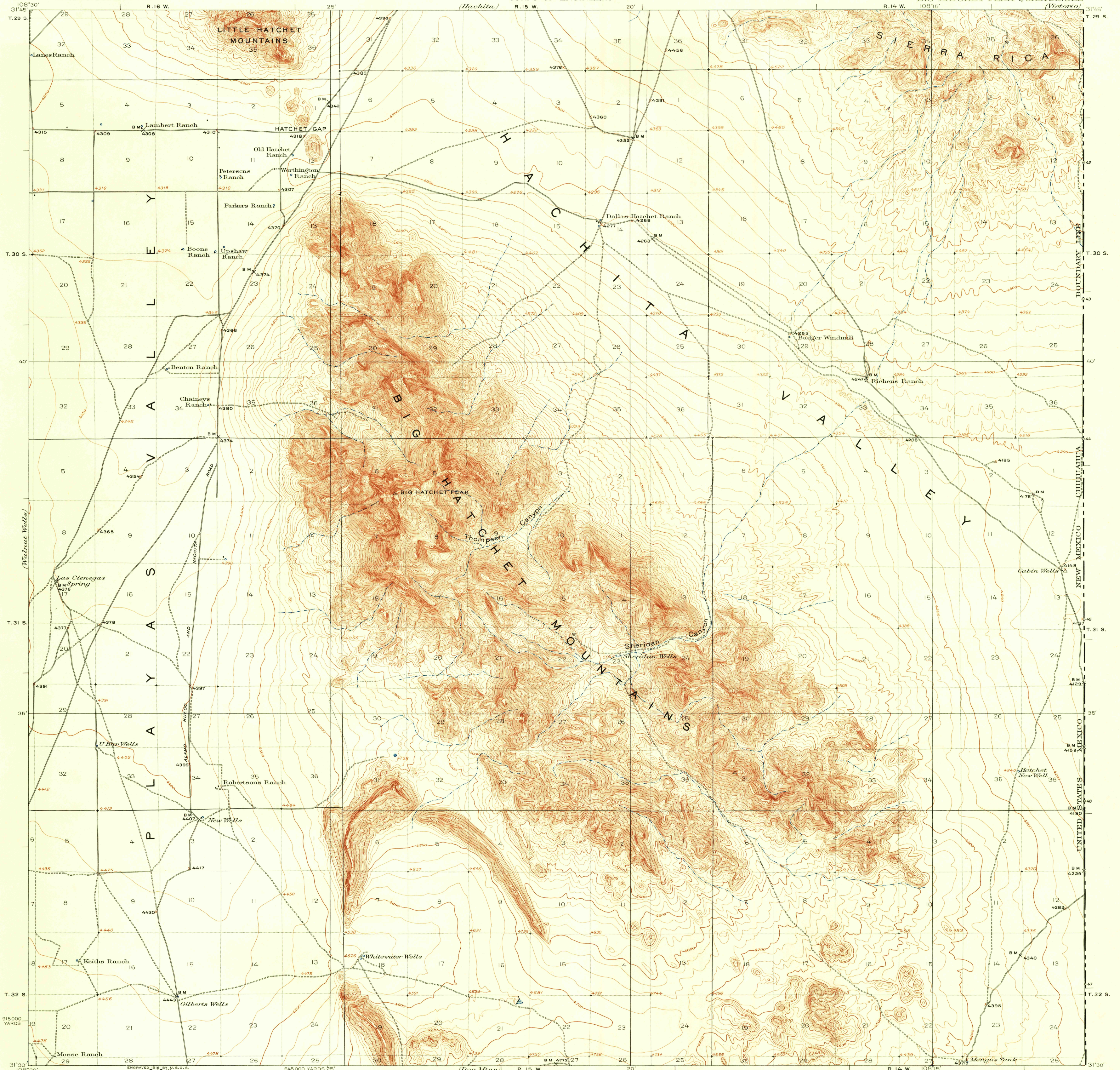


UNITED STATES
DEPARTMENT OF THE INTERIOR
GEOLOGICAL SURVEY

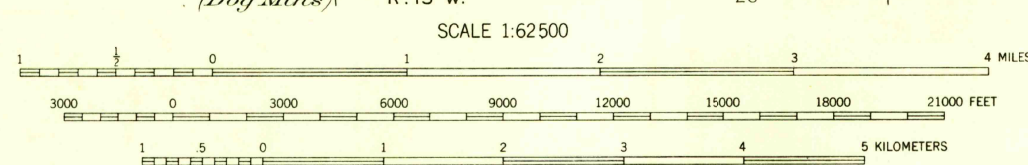
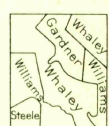
UNITED STATES
DEPARTMENT OF THE ARMY
CORPS OF ENGINEERS

NEW MEXICO
(HIDALGO COUNTY)
BIG HATCHET PEAK QUADRANGLE

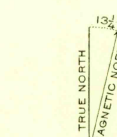


ENGRAVED 1918 BY U.S.G.S.
R. B. Marshall, Chief Geographer.
T. G. Gardine, Geographer in charge.
Topography by C. C. Gardner, F. L. Whaley,
R. B. Steele, and A. C. Williams.
Control by International Boundary Commission;
R. W. Burchard, R. B. Steele, and B. H. Yoakum.
Surveyed in 1917-1918.

SURVEYED IN COOPERATION WITH THE WAR DEPARTMENT



USGS
Historical File
Topographic Division



USGS
FILE COPY
TOPOGRAPHIC DIVISION

Polyconic projection, North American datum.
5000 yard grid based upon U.S. zone system, E.

BIG HATCHET PEAK, N.M.
Edition of 1937
(First published in 1918)

JUN 16 1961

1075