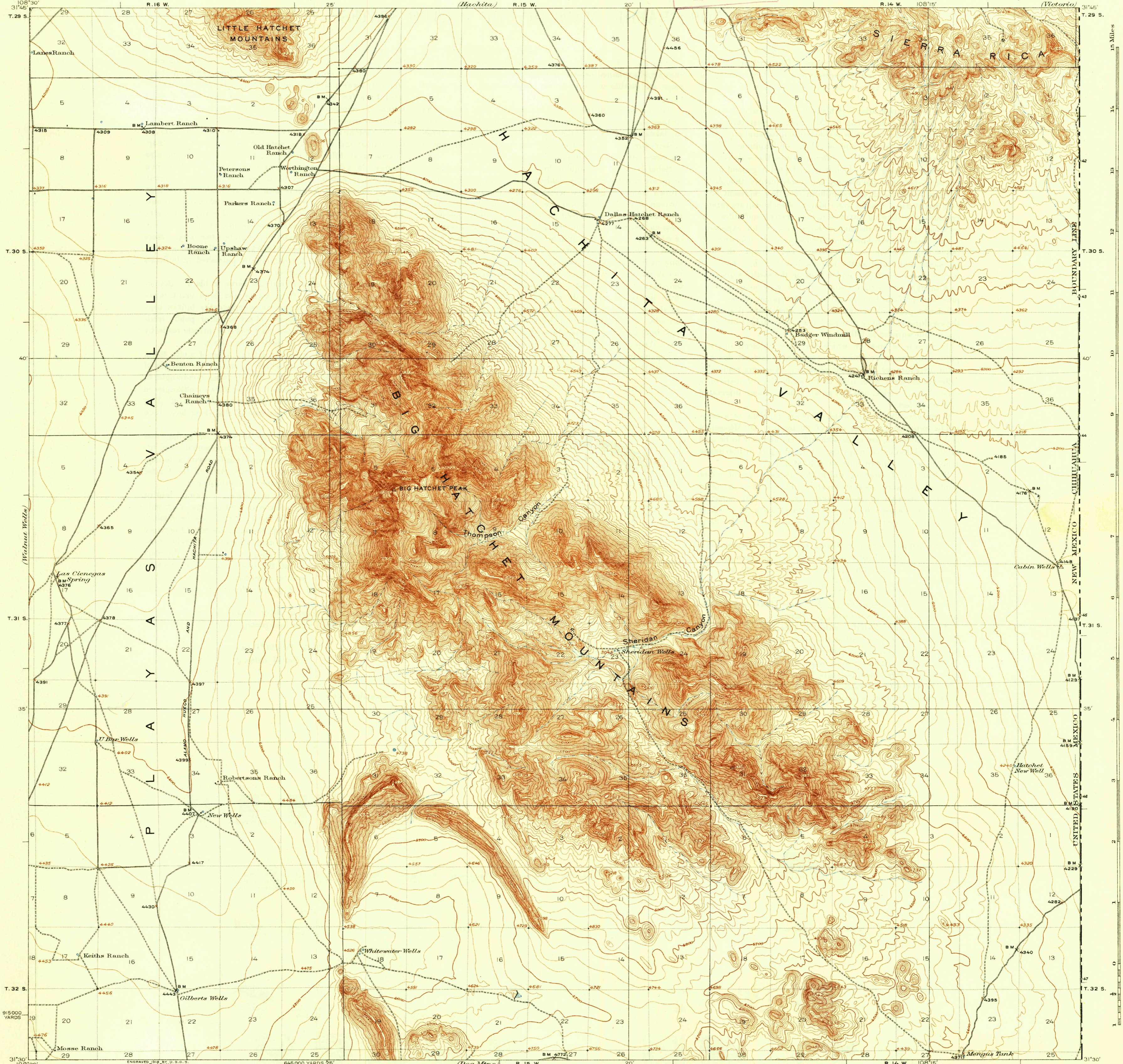
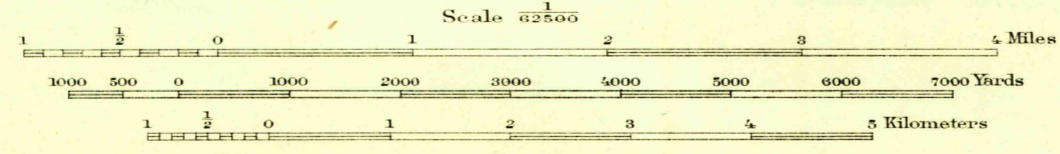
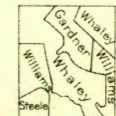


U.S.G.S.
FILE COPY
Inspection and Editing



R. B. Marshall, Chief Geographer.
T. G. Gardine, Geographer in charge.
Topography by C. G. Gardner, F. L. Whaley,
R. B. Steele, and A. C. Williams.
Control by International Boundary Commission;
R. W. Burchard, R. B. Steele, and B. H. Yeakum.
Surveyed in 1917-1918.



Contour interval 25 feet.
Datum is mean sea level.

APPROXIMATE MEAN
DECLINATION, 1917

USGS
Historical File
Topographic Division
FILE COPY
Inspection and Editing

Polyconic projection, North American datum.
5000 yard grid based upon U. S. zone system, E

BIG HATCHET PEAK, N. M.
Edition of 1937
(First published in 1918)

(1975)

1975