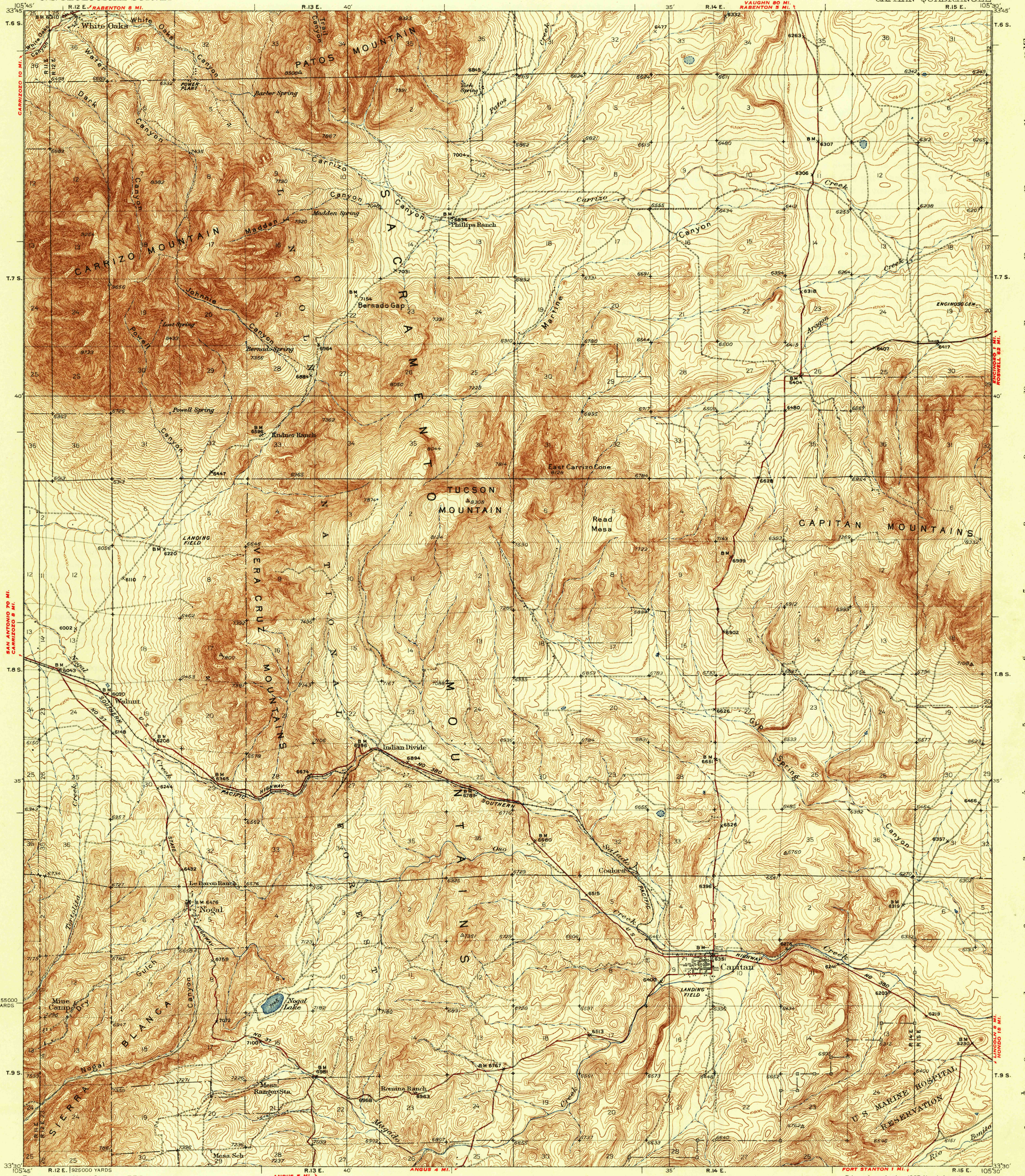


I 19.12

DEPARTMENT OF THE INTERIOR
U.S. GEOLOGICAL SURVEY

NEW MEXICO
(LINCOLN COUNTY)
CAPITAN QUADRANGLE



SAN ANTONIO 70 MI.
CARRIZO 8 MI.

ROSWELL 18 MI.
HOLLOO 18 MI.

R.12 E. 1925000 YARDS R.13 E. ANGUS 4 MI. R.14 E. PORT STANTON 1 MI. R.15 E.

Topography by Max J. Gleissner, T.T. Ranney, W.S. Higginson, M.C. McClellan, C.E. Walker, R.G. Carpenter, John Stricklin, and Nute Epps
Control by U.S. Geological Survey
Surveyed in 1934

Scale 62500
1 2 3 4 Miles
5000 10000 15000 20000 Feet
1 2 3 4 5 Kilometers
Contour interval 20 feet
Datum is mean sea level

APPROXIMATE MEAN DECLINATION, 1904
POLYCONIC PROJECTION, 1927 NORTH AMERICAN DATUM
5000 YARD GRID BASED UPON U.S. ZONE SYSTEM, E
LAND LINES PERTAINING TO PART OF TWP. 8 S., R. 15 E. ARE OMITTED BECAUSE LAND PLATS AND TOPOGRAPHY CANNOT BE RECONCILED
HARD IMPERVIOUSLY SURFACED ROADS
OTHER MAIN TRAVELED ROADS
1936
CAPITAN, N. MEX.
Edition of 1937

USGS Library
Reston, VA.
Topo Archive

UTAH COLLEGE LIBRARIES
JUNI., WYOMING