

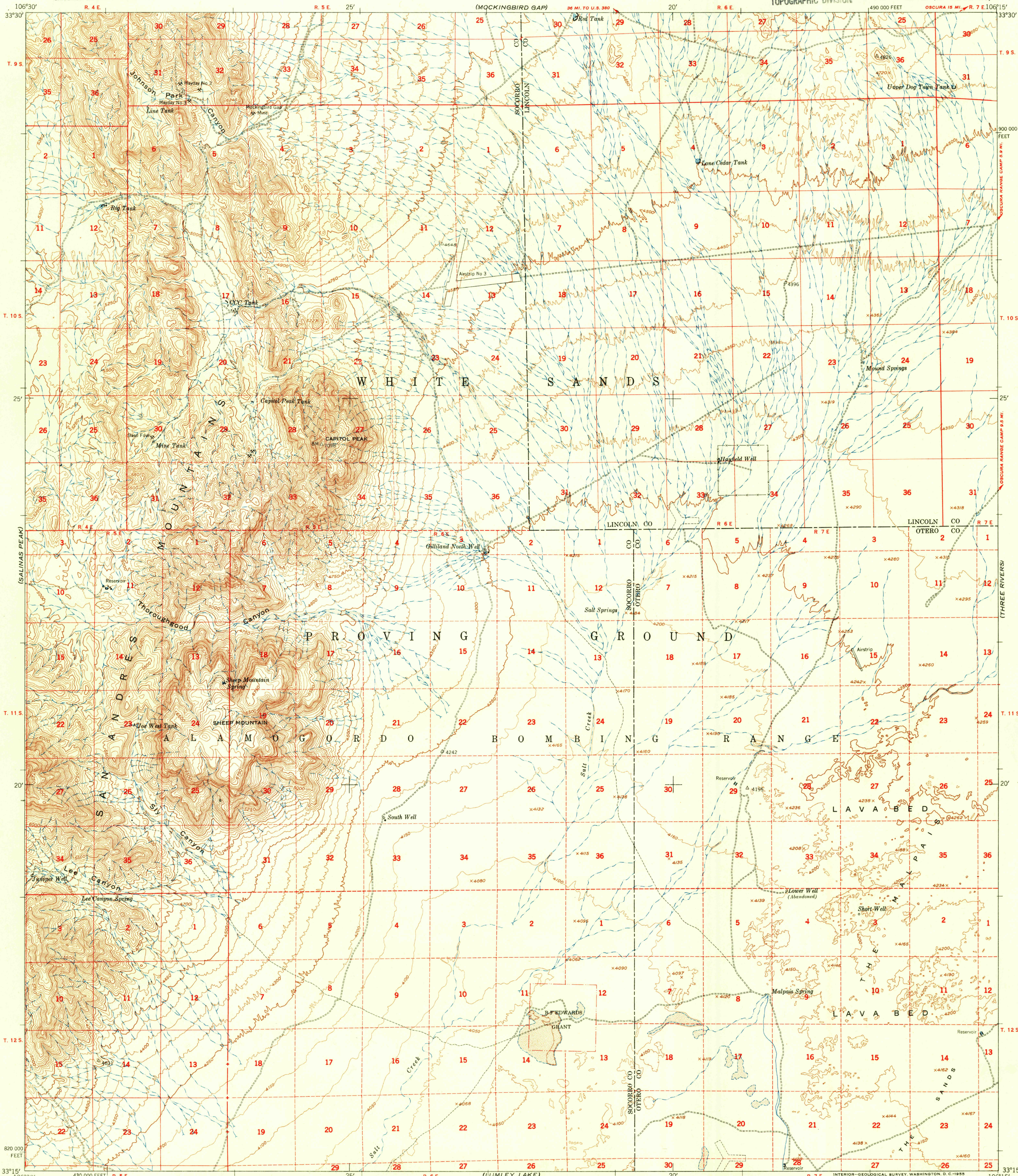
(GRANJEAN WELL)

(CHIHUAHUA RANCH)

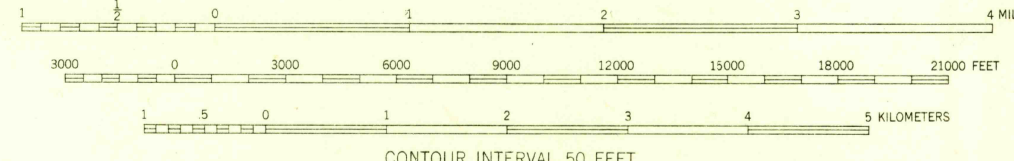
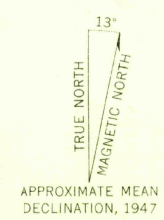
UNITED STATES
DEPARTMENT OF THE INTERIOR
GEOLOGICAL SURVEY

UNITED STATES
DEPARTMENT OF THE ARMY
CORPS OF ENGINEERS

U.S.G.S.
FILE COPY
TOPOGRAPHIC DIVISION
CAPITOL PEAK QUADRANGLE
NEW MEXICO
15 MINUTE SERIES (TOPOGRAPHIC)



Mapped by the Army Map Service
Published for civil use by the Geological Survey
Control by USC&GS, USGS, and AMS
Topography from aerial photographs by photogrammetric methods
Aerial photographs taken 1946-1948. Field check 1947
Polyconic projection. 1927 North American datum
10,000-foot grid based on New Mexico coordinate system,
central zone
No distinction is made between barns, dwellings,
commercial and industrial buildings
Dashed land lines indicate approximate locations
Unchecked elevations are shown in brown



CONTOUR INTERVAL 50 FEET
DATUM IS MEAN SEA LEVEL

USCS
Historical File
Topographic Division



ROAD CLASSIFICATION
Heavy-duty **4 LANE 16 LANE** Light-duty
Medium-duty **4 LANE 16 LANE** Unimproved dirt
U.S. Route State Route

U.S.G.S.
FILE COPY
TOPOGRAPHIC DIVISION
CAPITOL PEAK, N. MEX.
N3315-W10615/15
1947

THIS MAP COMPLIES WITH NATIONAL MAP ACCURACY STANDARDS
FOR SALE BY U. S. GEOLOGICAL SURVEY, FEDERAL CENTER, DENVER, COLORADO OR WASHINGTON 25, D. C.
A FOLDER DESCRIBING TOPOGRAPHIC MAPS AND SYMBOLS IS AVAILABLE ON REQUEST

JAN 19 1955
2130