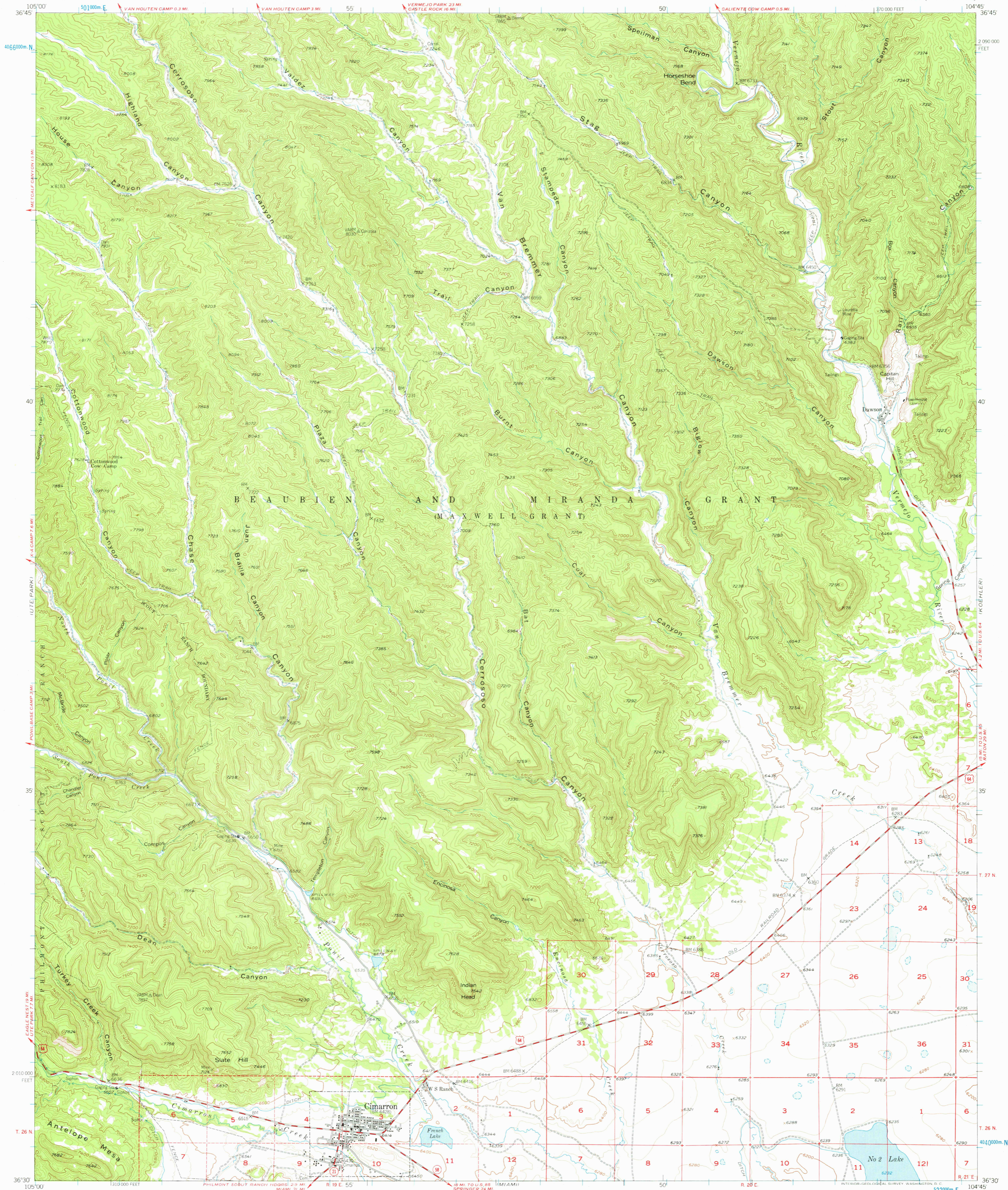
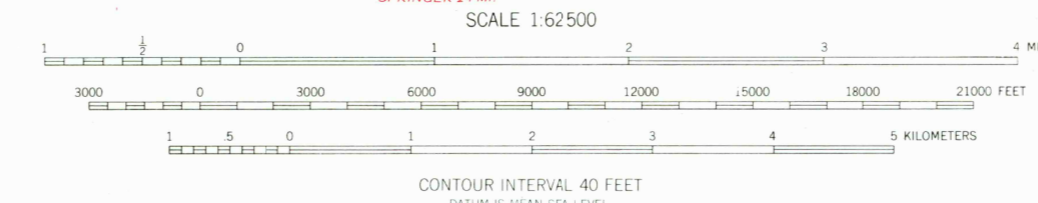


BRILLIANT



Mapped, edited, and published by the Geological Survey  
Control by USGS and USC&GS  
Topography from aerial photographs by multiplex methods  
Aerial photographs taken 1953. Field check 1955  
Polyconic projection. 1927 North American datum  
10,000-foot grid based on New Mexico coordinate system,  
east zone  
1000-meter Universal Transverse Mercator grid ticks,  
zone 13, shown in blue  
Dashed land lines indicate approximate locations  
Land lines unsurveyed in Beaubien and Miranda (Maxwell) Grant  
except in T. 26 N., R. 19, 20, and 21 E., T. 27 N., R. 21 E.,  
and in part of T. 27 N., R. 20 E.



ROAD CLASSIFICATION

Medium duty	Light duty
Unimproved dirt	
U.S. Route	State Route

THIS MAP COMPLIES WITH NATIONAL MAP ACCURACY STANDARDS  
FOR SALE BY U.S. GEOLOGICAL SURVEY, DENVER 2, COLORADO OR WASHINGTON 25, D. C.  
A FOLDER DESCRIBING TOPOGRAPHIC MAPS AND SYMBOLS IS AVAILABLE ON REQUEST

CIMARRON, N. MEX.  
N3630-W10445/15  
1955