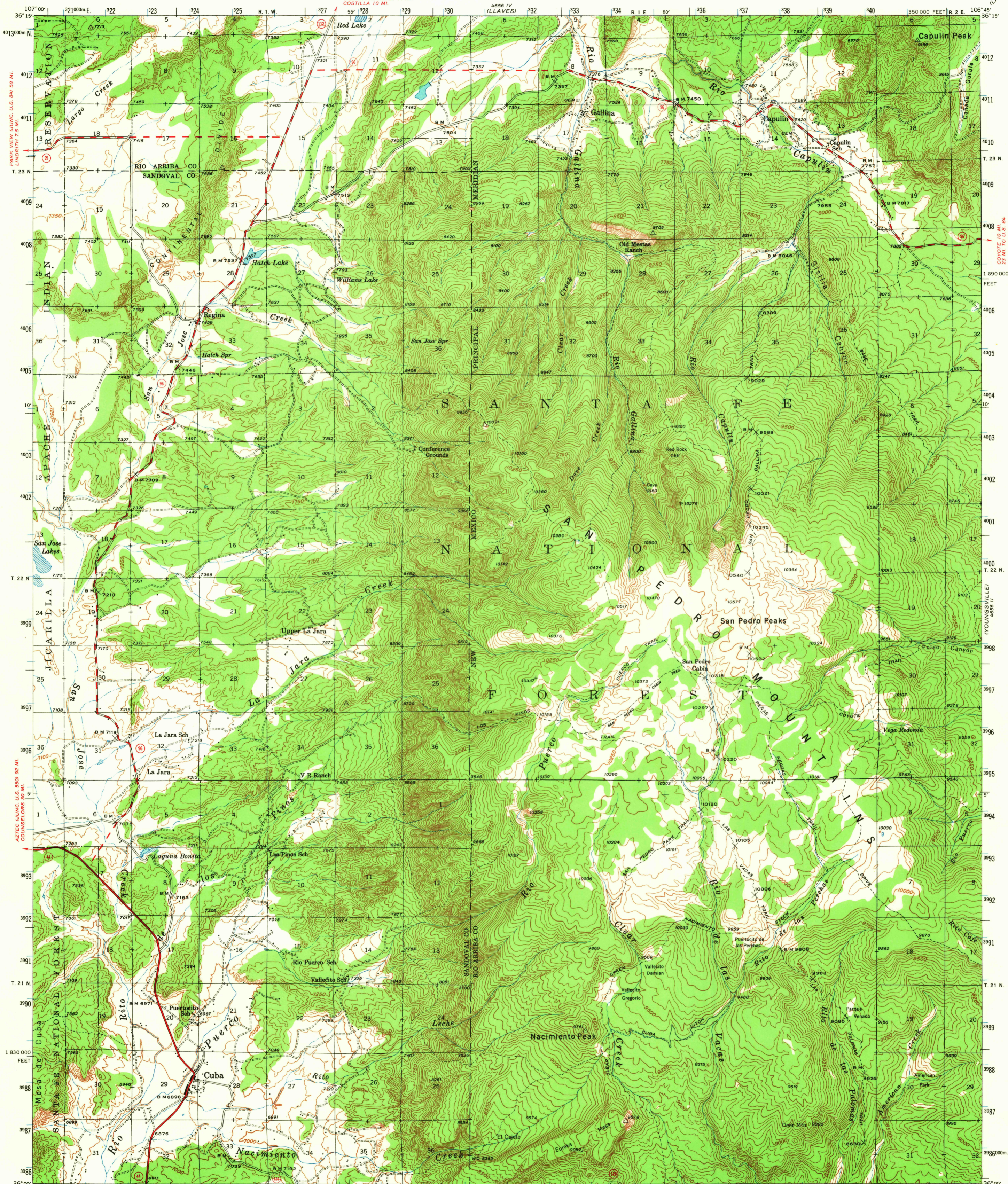
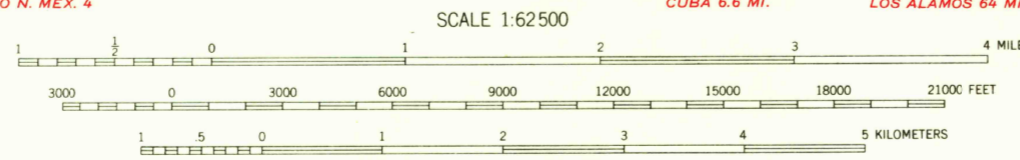
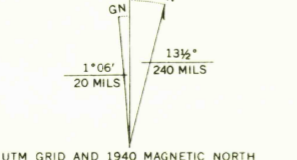


4559 M. (MESA FORALE)  
1:24 000



Topography by S. T. Penick, T. T. Ranney,  
C. E. Walker, and W. P. Metcalfe  
Surveyed in 1938, 1939 and 1940

ROAD CLASSIFICATION  
Heavy-duty ——— Light-duty ———  
Medium-duty ——— Unimproved dirt ———  
Slate Route ○



Section lines omitted in  
T. 21 & 22 N., R. 1 E.  
because of insufficient data.

Polyconic projection. 1927 North American datum  
10,000-foot grid based on New Mexico (Central)  
rectangular coordinate system  
1000-meter Universal Transverse Mercator grid ticks,  
zone 13, shown in blue

CUBA, N. MEX.  
N3600—W10645/15

1940

AMS 4656 III—SERIES V731

FOR SALE BY U. S. GEOLOGICAL SURVEY, DENVER, COLORADO 80225 OR WASHINGTON, D. C. 20242  
A FOLDER DESCRIBING TOPOGRAPHIC MAPS AND SYMBOLS IS AVAILABLE ON REQUEST