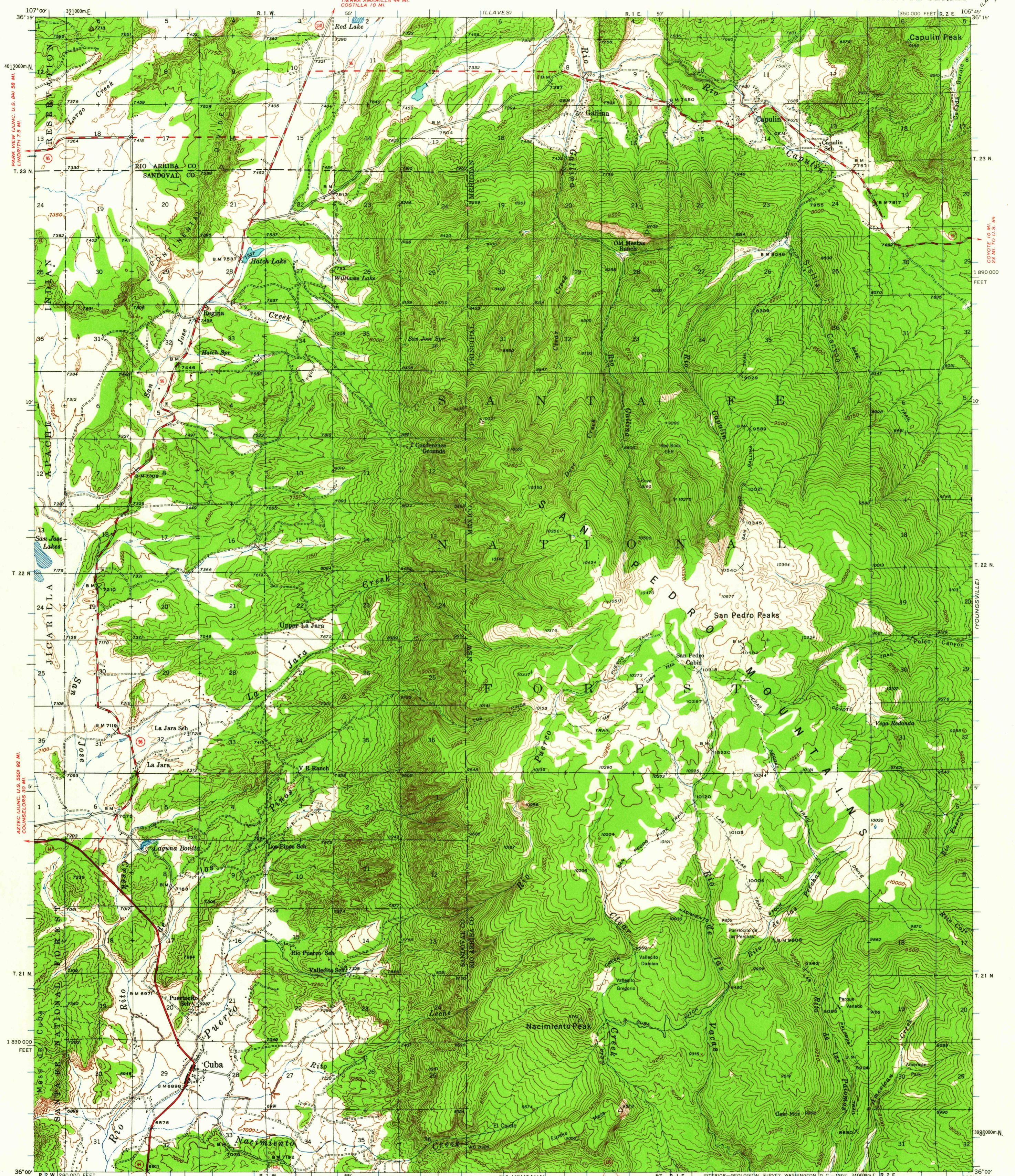


LAGUNA PEAK 7240



107° 00' 36° 15' 4012000m N. T. 23 N. 24 25 26 30 36 10' T. 22 N. 24 25 36 5' T. 21 N. 1830 000 FEET 36° 00' 107° 00'

350 000 FEET R. 2 E. 106° 45' 36° 15' T. 23 N. 1890 000 FEET T. 22 N. 10' T. 21 N. 3986 000m N. 36° 00' 107° 00'

Topography by S. T. Penick, T. T. Ranney, C. E. Walker, and W. P. Metcalfe. Surveyed in 1938, 1939 and 1940

SCALE 1:62500

Section lines omitted in Ts. 21 & 22 N., R. 1 E. because of insufficient data.

Polyconic projection. 1927 North American datum 10,000-foot grid based on New Mexico (Central) rectangular coordinate system 1000-meter Universal Transverse Mercator grid ticks, zone 13, shown in blue

ROAD CLASSIFICATION Heavy-duty Light-duty Medium-duty Unimproved dirt State Route

APPROXIMATE MEAN DECLINATION, 1940

CONTOUR INTERVAL 50 FEET DATUM IS MEAN SEA LEVEL

3000 0 3000 6000 9000 12000 15000 18000 21000 FEET 1 5 0 1 2 3 4 5 KILOMETERS

CUBA, N. MEX. N3600-W10645/15

1940

FOR SALE BY U. S. GEOLOGICAL SURVEY, DENVER 25, COLORADO OR WASHINGTON 25, D. C. A FOLDER DESCRIBING TOPOGRAPHIC MAPS AND SYMBOLS IS AVAILABLE ON REQUEST

USGS U.S.G.S. Historical File Topographic Division COPY TOPOGRAPHIC DIVISION

1620 APR 18 1952