

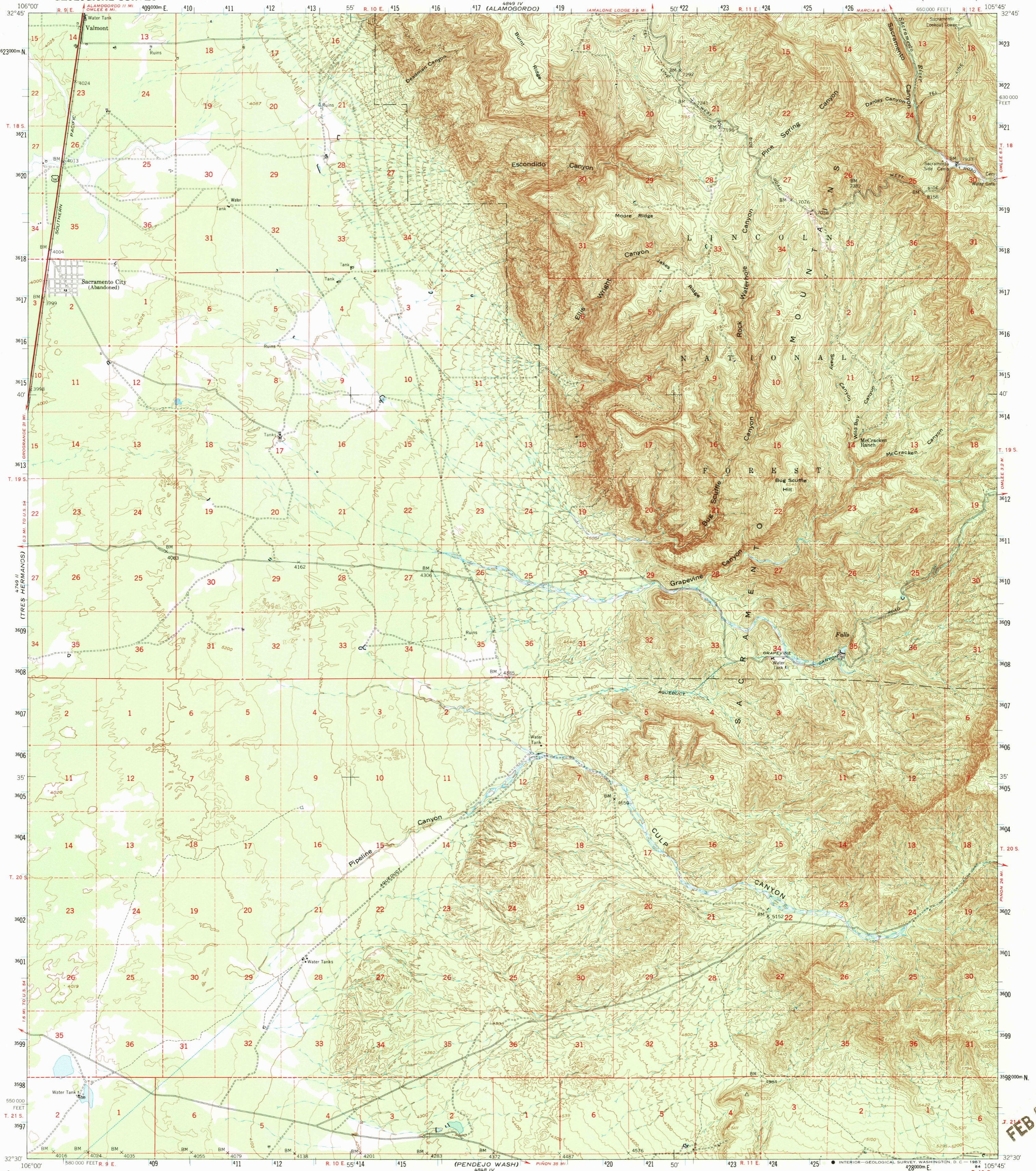
(HOLLOWMAN)

(CLOUDROFT)

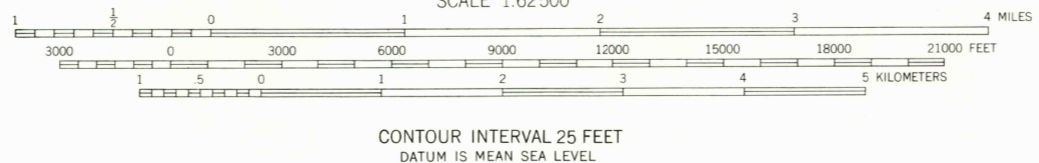
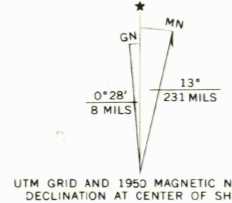
UNITED STATES  
DEPARTMENT OF THE INTERIOR  
GEOLOGICAL SURVEY

UNITED STATES  
DEPARTMENT OF THE ARMY  
CORPS OF ENGINEERS

ESCONDIDO CANYON QUADRANGLE  
NEW MEXICO—OTERO CO.  
15 MINUTE SERIES (TOPOGRAPHIC)



Mapped by the Army Map Service  
Published for civil use by the Geological Survey  
Control by USGS, USC&GS, and USCE  
Topography from aerial photographs by multiplex methods  
Aerial photographs taken 1948-1949. Field check 1950  
Polyconic projection. 1927 North American datum  
10,000-foot grid based on New Mexico coordinate system  
central zone  
Unchecked elevations are shown in brown  
Dashed land lines indicate approximate locations  
Locations of all boundaries are approximate  
1000-meter Universal Transverse Mercator grid ticks,  
zone 13, shown in blue



ROAD CLASSIFICATION  
 Heavy-duty 4 LANE 2 LANE Light-duty   
 Medium-duty 2 LANE 2 LANE Unimproved dirt   
 U.S. Route State Route

ESCONDIDO CANYON, N. MEX.  
N3230-W10545/15

1950  
AMS 4849 III—SERIES V781

THIS MAP COMPLIES WITH NATIONAL MAP ACCURACY STANDARDS  
 FOR SALE BY U. S. GEOLOGICAL SURVEY, DENVER, COLORADO 80225 OR WASHINGTON, D. C. 20242  
 A FOLDER DESCRIBING TOPOGRAPHIC MAPS AND SYMBOLS IS AVAILABLE ON REQUEST

RETURN TO: