

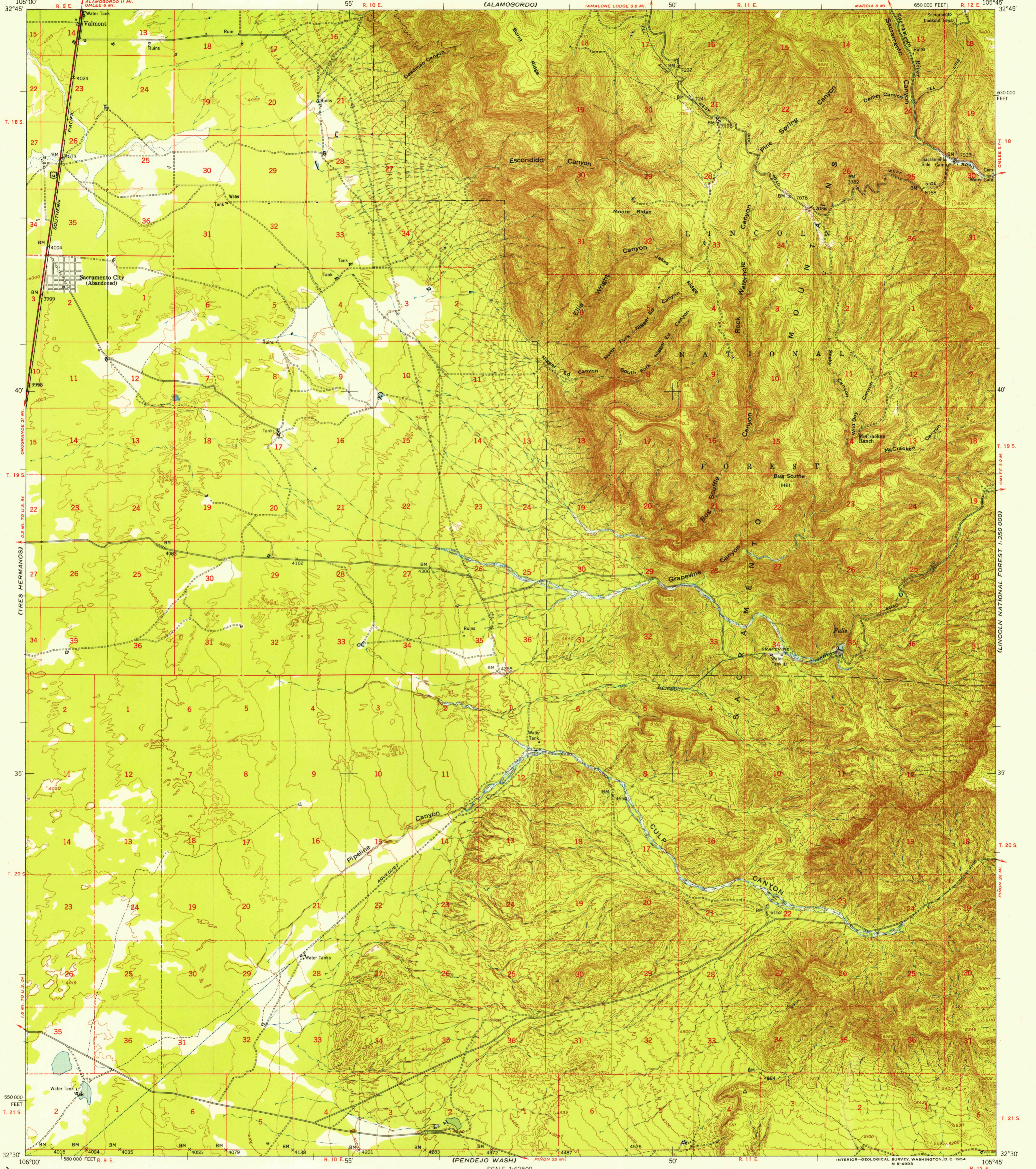
(HOLLOMAN)

UNITED STATES
DEPARTMENT OF THE INTERIOR
GEOLOGICAL SURVEY

UNITED STATES
DEPARTMENT OF THE ARMY
CORPS OF ENGINEERS

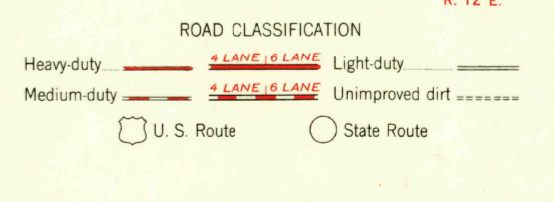
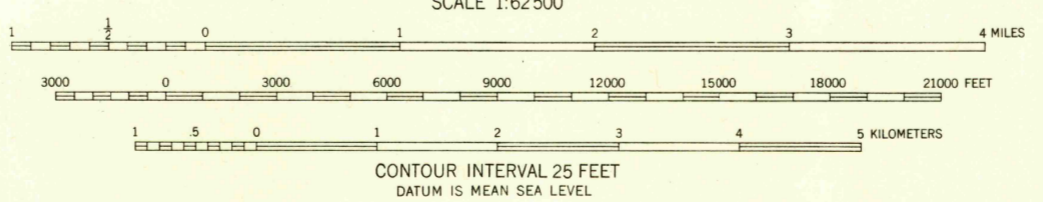
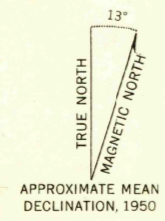
ESCONDIDO CANYON QUADRANGLE
NEW MEXICO—OTERO CO.
15 MINUTE SERIES (TOPOGRAPHIC)

(GLODCROFT)



(COROPANDE)

Mapped by the Army Map Service
Published for civil use by the Geological Survey
Control by USGS, USC&GS, and USCE
Topography from aerial photographs by multiplex methods
Aerial photographs taken 1948-1949. Field check 1950
Polyconic projection. 1927 North American datum
10,000-foot grid based on New Mexico coordinate system
central zone
Unchecked elevations are shown in brown
Dashed land lines indicate approximate locations
Locations of all boundaries are approximate



FOR SALE BY U. S. GEOLOGICAL SURVEY, FEDERAL CENTER, DENVER, COLORADO OR WASHINGTON 25, D. C.
A FOLDER DESCRIBING TOPOGRAPHIC MAPS AND SYMBOLS IS AVAILABLE ON REQUEST

ESCONDIDO CANYON, N. MEX.
N3230—W10545/15
1950