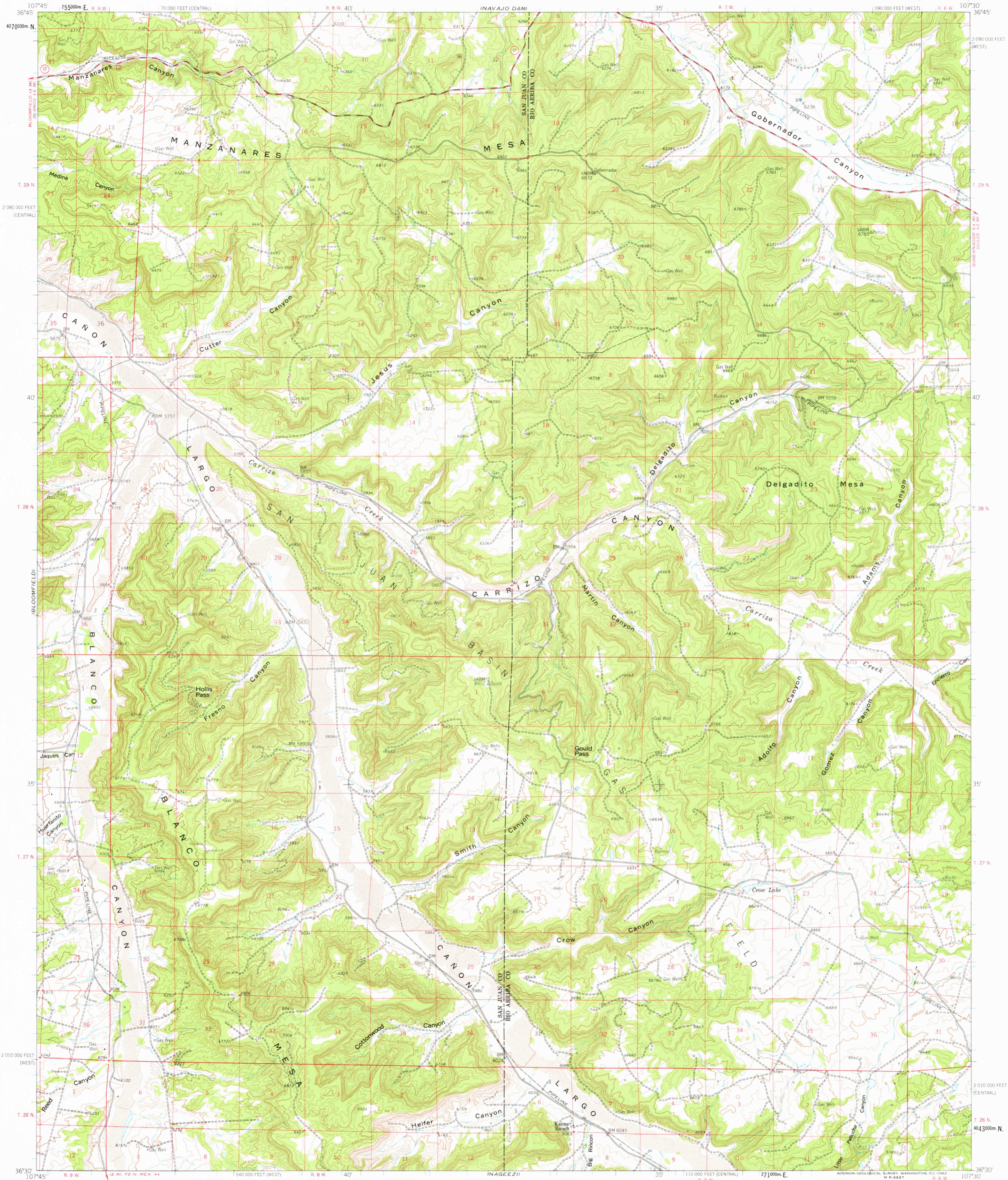
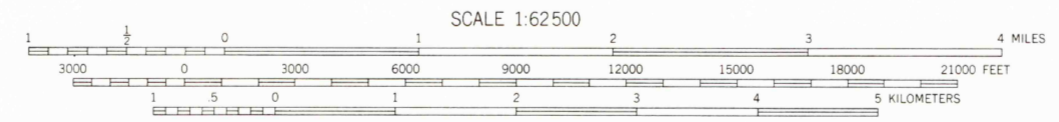
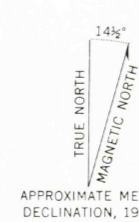


147260

BOHNEZ RANCHO
1:24,000



Mapped, edited, and published by the Geological Survey
Control by USGS and USC&GS
Topography by photogrammetric methods from aerial
photographs taken 1955. Field checked 1959
Polyconic projection. 1927 North American datum
10,000-foot grid based on New Mexico coordinate system,
west and central zones
1000 meter Universal Transverse Mercator grid ticks,
zone 13, shown in blue



CONTOUR INTERVAL 40 FEET
DATUM IS MEAN SEA LEVEL



ROAD CLASSIFICATION
Medium-duty ——— Light-duty ———
Unimproved dirt - - - - -
State Route ○

THIS MAP COMPLIES WITH NATIONAL MAP ACCURACY STANDARDS
FOR SALE BY U.S. GEOLOGICAL SURVEY, DENVER 25, COLORADO OR WASHINGTON 25, D.C.
A FOLDER DESCRIBING TOPOGRAPHIC MAPS AND SYMBOLS IS AVAILABLE ON REQUEST

GOULD PASS, N. MEX.
N3630-W10730/15
1959