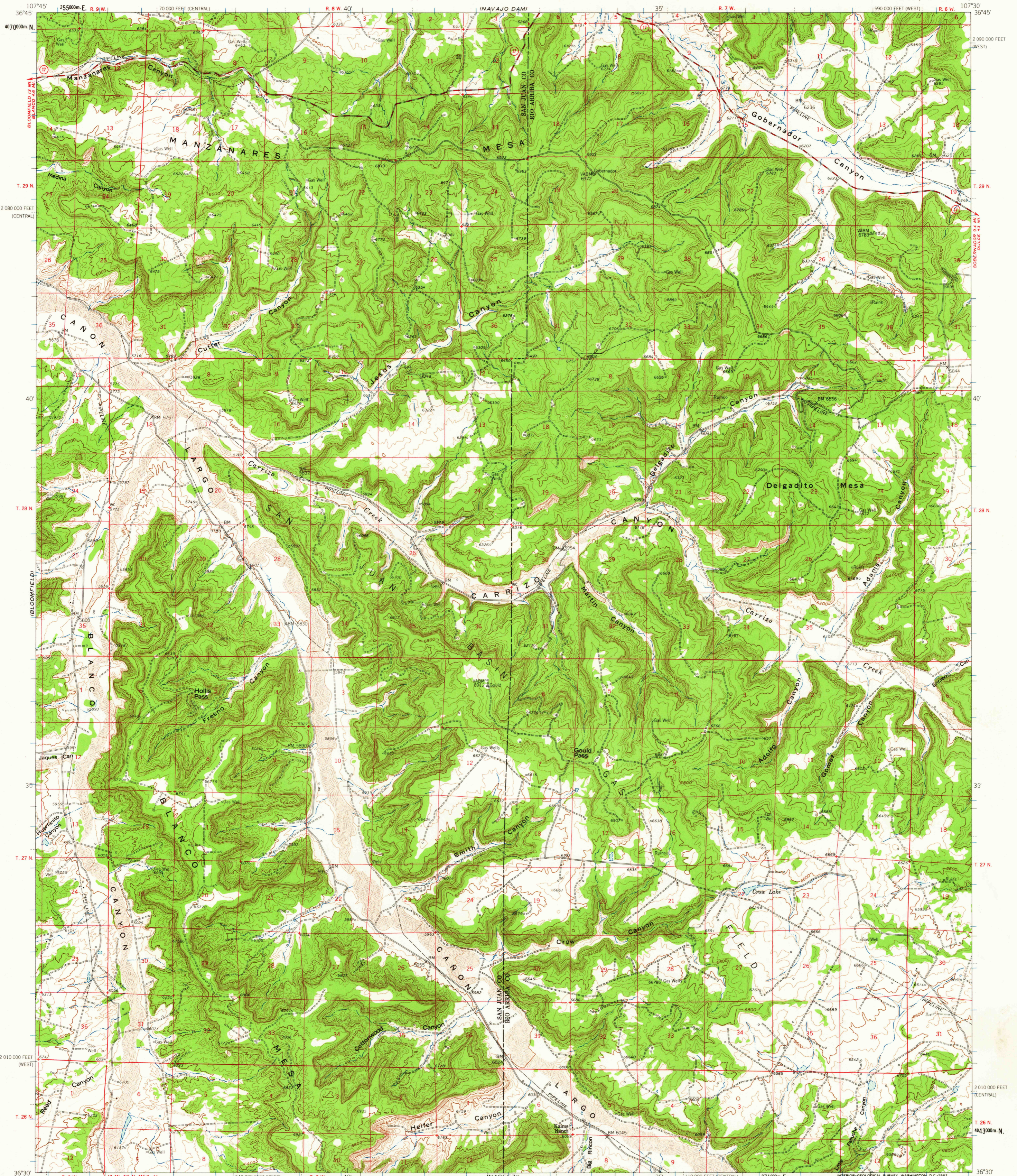
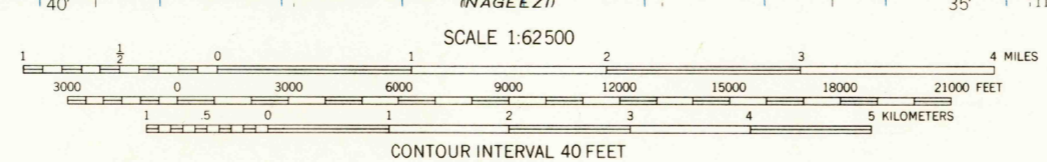
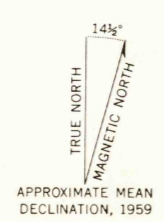


IBOMEZ RANCH
1:24,000



Mapped, edited, and published by the Geological Survey
Control by USGS and USC&GS
Topography by photogrammetric methods from aerial
photographs taken 1955. Field checked 1959
Polyconic projection. 1927 North American datum
10,000-foot grid based on New Mexico coordinate system,
west and central zones
1000 meter Universal Transverse Mercator grid ticks,
zone 13, shown in blue



ROAD CLASSIFICATION
Medium-duty ——— Light-duty ———
Unimproved dirt - - - - -
State Route ○

U.S.G.S.
FILE COPY
TOPOGRAPHIC DIVISION

FOR SALE BY U.S. GEOLOGICAL SURVEY, DENVER 25, COLORADO OR WASHINGTON 25, D.C.
A FOLDER DESCRIBING TOPOGRAPHIC MAPS AND SYMBOLS IS AVAILABLE ON REQUEST

GOULD PASS, N. MEX.
N3630-W10730/15
1959