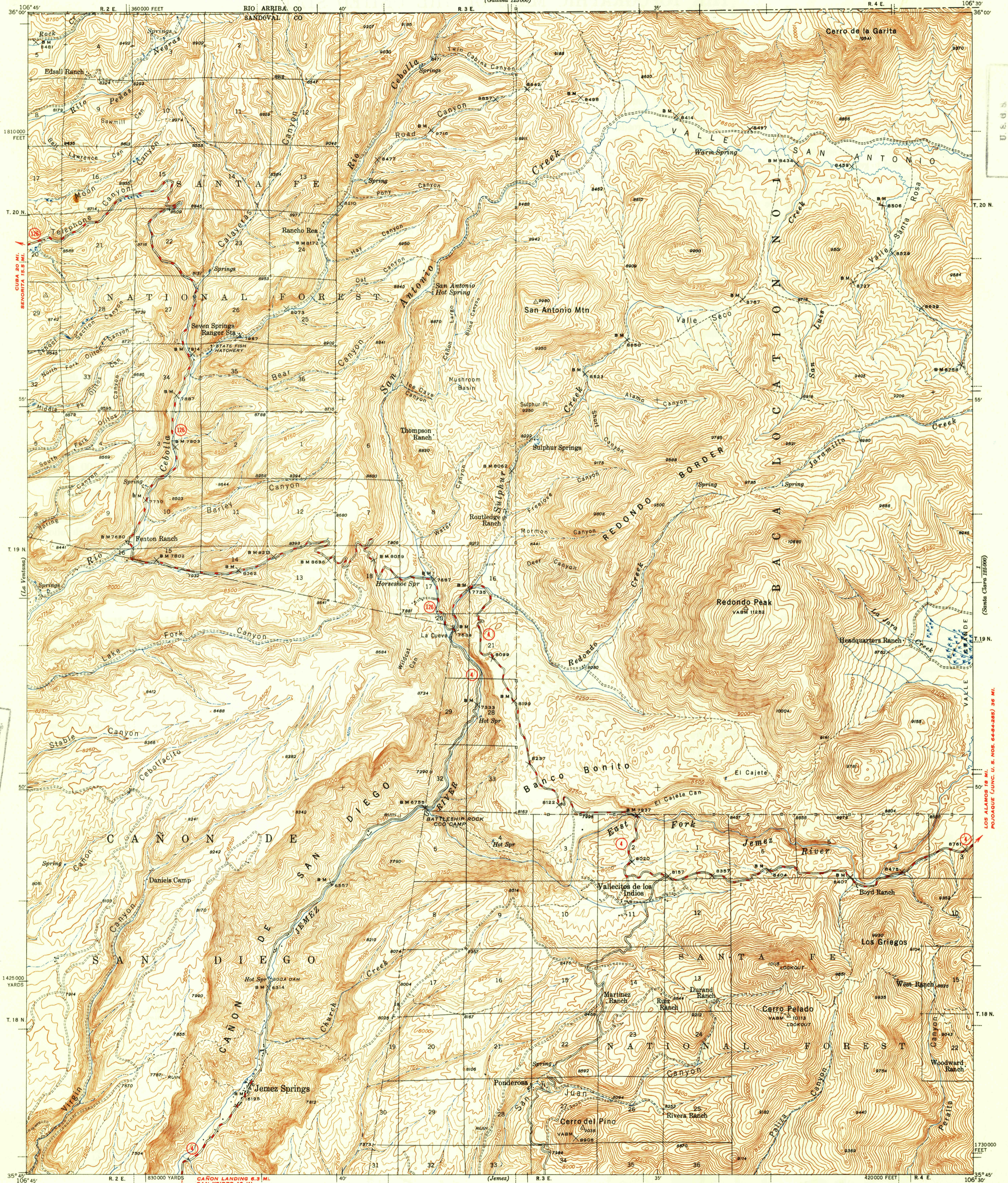


U. S. G. S.  
FILE COPY  
Inspection and Editing.

UNITED STATES  
DEPARTMENT OF THE INTERIOR  
GEOLOGICAL SURVEY

NEW MEXICO  
JEMEZ SPRINGS QUADRANGLE  
15-MINUTE SERIES



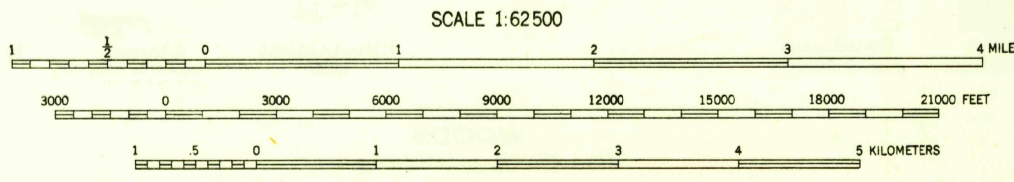
U. S. G. S.  
FILE COPY  
Inspection and Editing.

U. S. G. S.  
FILE COPY  
Inspection and Editing.

Topography by S. T. Penick and M. C. McClellan  
Surveyed in 1937

**ROAD CLASSIFICATION**  
HARD-SURFACE ALL WEATHER ROADS DRY WEATHER ROADS  
Heavy-duty ———— 4 LANE 16 FEET Improved dirt  
Medium-duty ———— 4 LANE 16 FEET Unimproved dirt  
Loose-surface, graded, or narrow hard-surface ————  
U. S. Route State Route

TRUE NORTH  
MAGNETIC NORTH  
APPROXIMATE MEAN  
DECLINATION, 1937



Contour interval 50 feet  
Datum is mean sea level

Section lines omitted in  
T. 20 N., R. 3 E., and part of  
T. 19 N., R. 3 E., and T. 18 N., R. 4 E.  
because of insufficient data

Polyconic projection. 1927 North American datum  
5000 yard grid based on U. S. zone system, E  
10000 foot grid based on New Mexico (Central)  
rectangular coordinate system

USGS  
Historical File  
Topographic Division  
FILE COPY  
Inspection and Editing.

JEMEZ SPRINGS, N. MEX.  
Edition of 1944  
reprinted 1948  
N 3545—W 10630/15