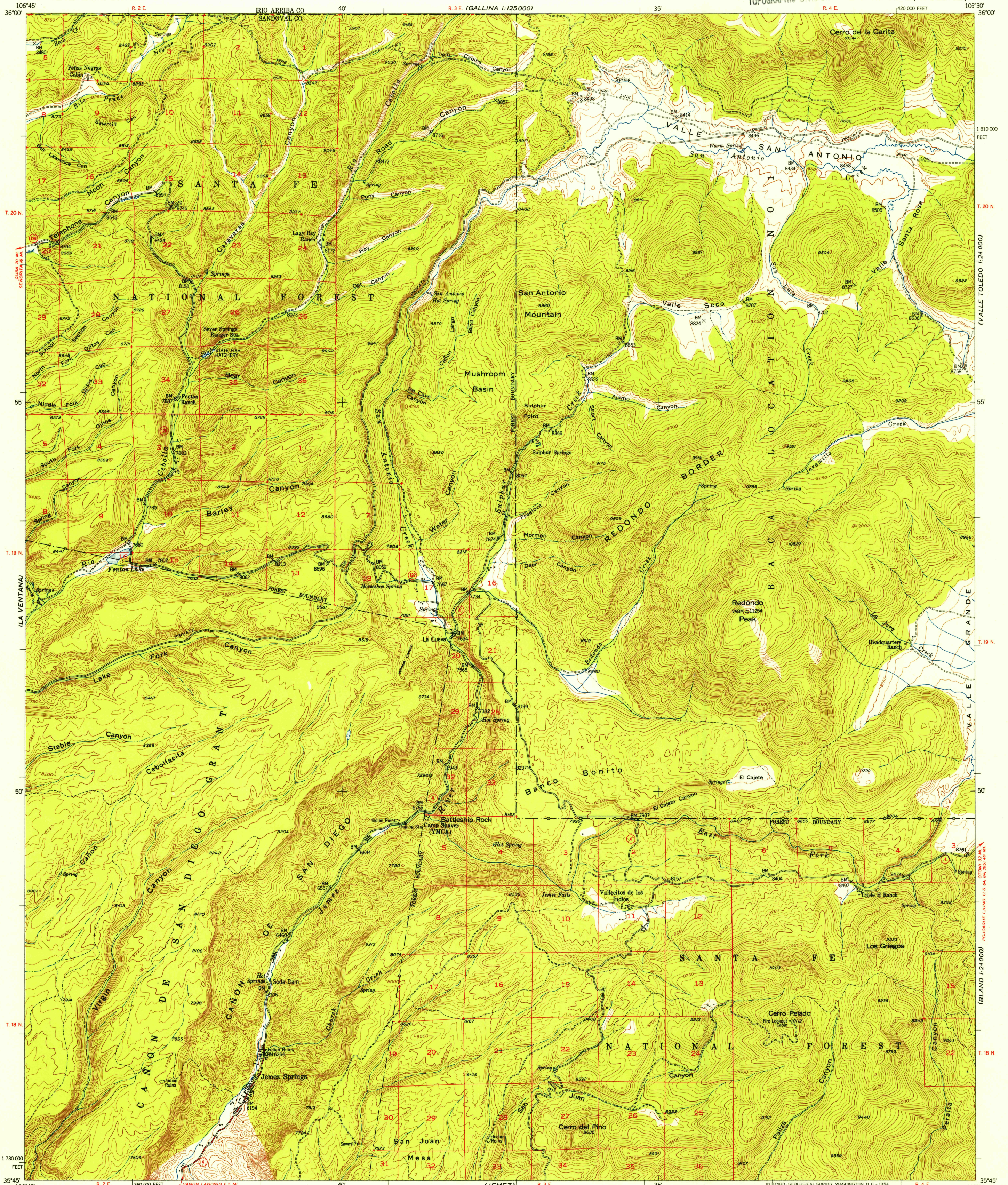
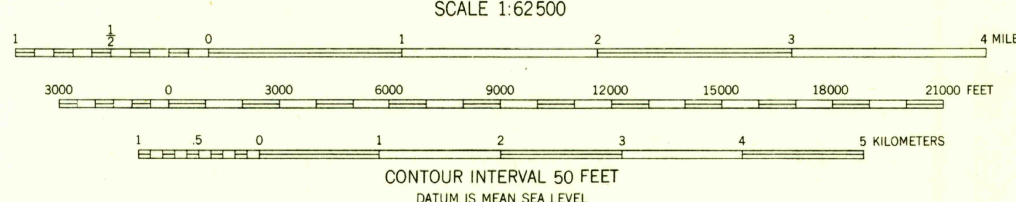
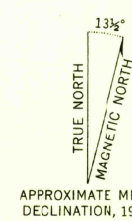


(CUBA)

UNITED STATES DEPARTMENT OF THE INTERIOR GEOLOGICAL SURVEY



Mapped, edited, and published by the Geological Survey Control by USGS and USC&GS Topography by plane-table surveys 1937 Culture revised 1952 Polyconic projection, 1927 North American datum 10,000-foot grid based on New Mexico coordinate system, central zone Certain land lines unsurveyed in T.18 N. - R.4 E. Certain land lines omitted in T.19 N. - R.3 E. and T.20 N. - R.3 E. because of insufficient data Unchecked elevations are shown in brown



ROAD CLASSIFICATION table with symbols for heavy-duty, medium-duty, light-duty, and unimproved dirt roads, as well as U.S. and State routes.



USGS Historical File TOPOGRAPHIC DIVISION FILE COPY

JEMEZ SPRINGS, N. MEX. N3545-W10630/15 1952

FOR SALE BY U. S. GEOLOGICAL SURVEY, FEDERAL CENTER, DENVER, COLORADO OR WASHINGTON 25, D. C. A FOLDER DESCRIBING TOPOGRAPHIC MAPS AND SYMBOLS IS AVAILABLE ON REQUEST

SEP 10 1954 2045