

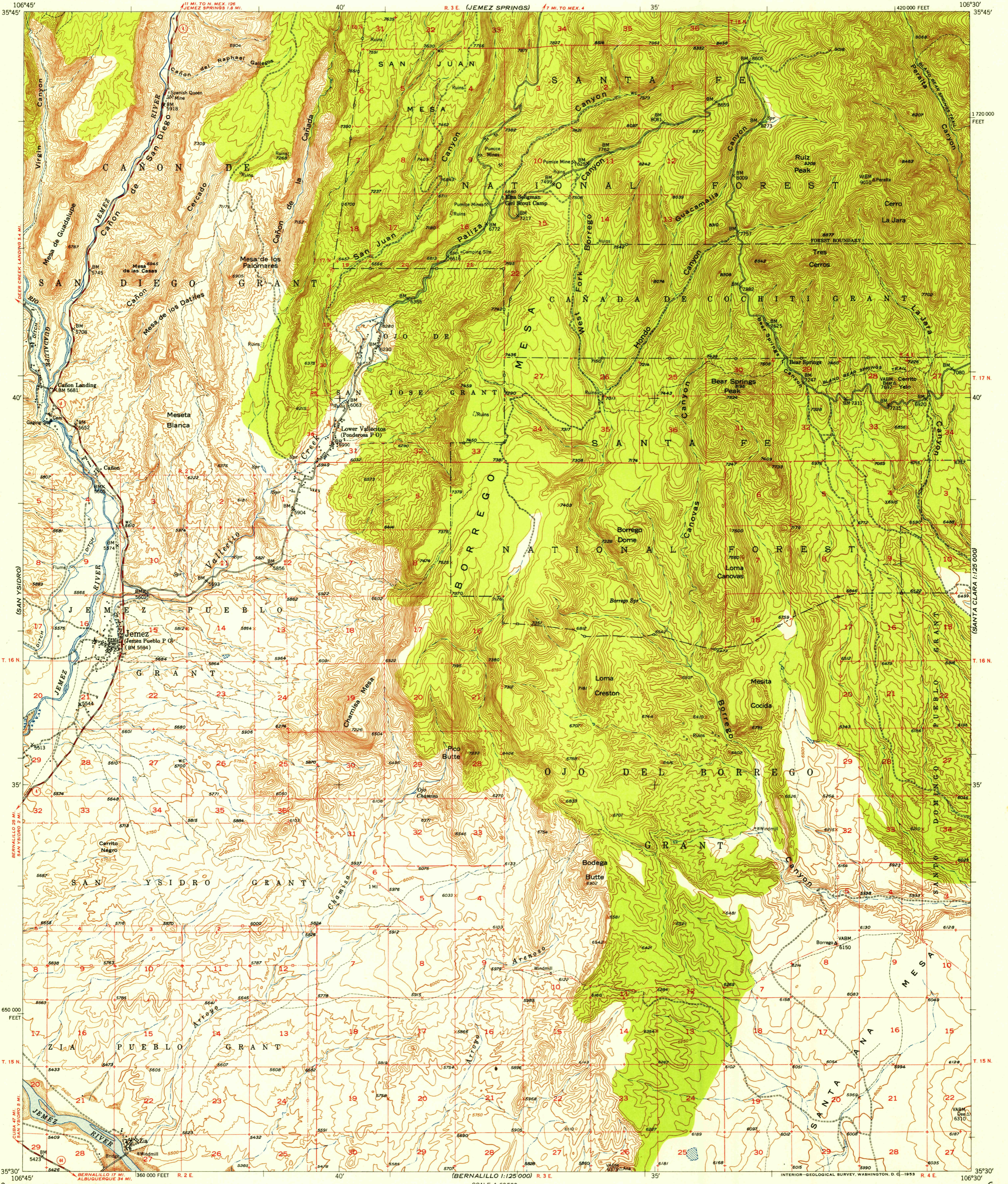
(LA VENTANA)

UNITED STATES DEPARTMENT OF THE INTERIOR GEOLOGICAL SURVEY

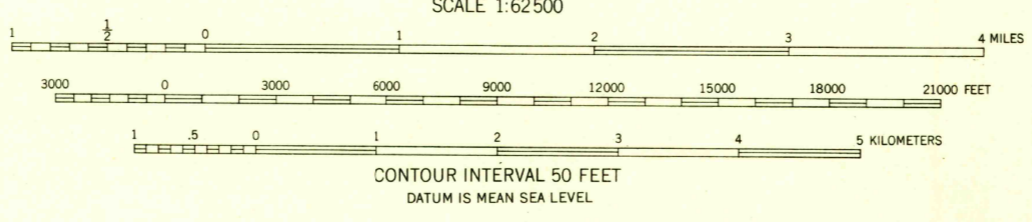
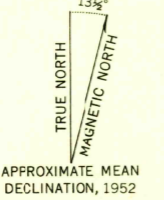
FILE COPY Inspection and Editing

JEMEZ QUADRANGLE NEW MEXICO-SANDOVAL CO. 15 MINUTE SERIES (TOPOGRAPHIC)

(SANTA CLARA 1:125 000)



Mapped, edited, and published by the Geological Survey Control by USGS, USCGS, and USFS Topography by plane-table surveys 1939 Culture revised 1952 Polyconic projection. 1927 North American datum 10,000-foot grid based on New Mexico coordinate system, central zone Certain land lines unsurveyed in T. 16 N.-R. 3 E., T. 17 N.-R. 4 E., and T. 18 N.-R. 4 E.



ROAD CLASSIFICATION: Heavy-duty, Light-duty, U.S. Route, State Route. Includes a 'Historical File Topographic Division' stamp and a 'FILE COPY' stamp.

THIS MAP COMPLIES WITH NATIONAL MAP ACCURACY STANDARDS FOR SALE BY U. S. GEOLOGICAL SURVEY, FEDERAL CENTER, DENVER, COLORADO OR WASHINGTON 25, D. C. A FOLDER DESCRIBING TOPOGRAPHIC MAPS AND SYMBOLS IS AVAILABLE ON REQUEST

JEMEZ, N. MEX. N3530-W10630/15 1943 MINOR CORRECTIONS MADE 1952

NOV 10 1953