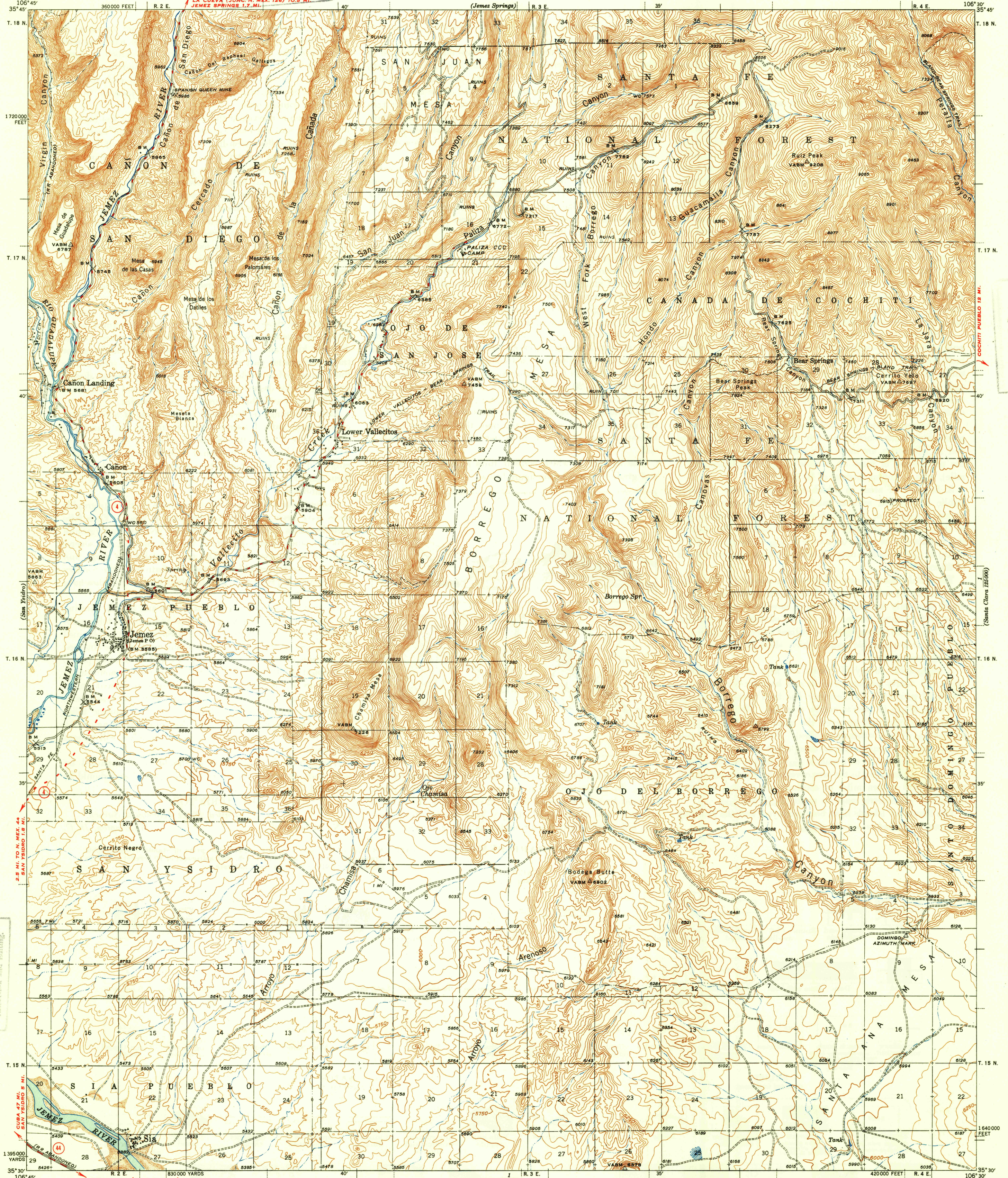


FILE COPY

LA CUEVA (JUNC. N. MEX. 126) 10.8 MI.
JEMEZ SPRINGS 1.7 MI.



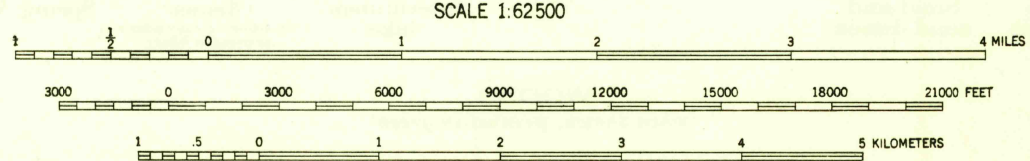
U.S.G.S.
FILE COPY
Inspection and Editing.

FILE COPY

Topography by M. C. McClellan, F. L. Gregg,
Harry Parker, W. A. McLaughlin, and D. M. Daugherty
Surveyed in 1938-39

ROAD CLASSIFICATION
HARD-SURFACE ALL WEATHER ROADS DRY WEATHER ROADS
Heavy-duty ——— **LANE'S LANE** Improved dirt.....
Medium-duty ——— **LANE'S LANE** Unimproved dirt.....
Loose-surface, graded, or narrow hard-surface — - - -
U. S. Route State Route

TRUE NORTH
MAGNETIC NORTH
APPROXIMATE MEAN
DECLINATION, 1939



Contour interval 50 feet
Datum is mean sea level

USGS
Historical File
Topographic Division

FILE COPY
Inspection and Editing.

Polyconic projection. 1927 North American datum
5000 yard grid based on U. S. zone system, E
10000 foot grid based on New Mexico (Central)
rectangular coordinate system

JEMEZ, N. MEX.
Edition of 1943
reprinted 1948
N3530-W10630/15