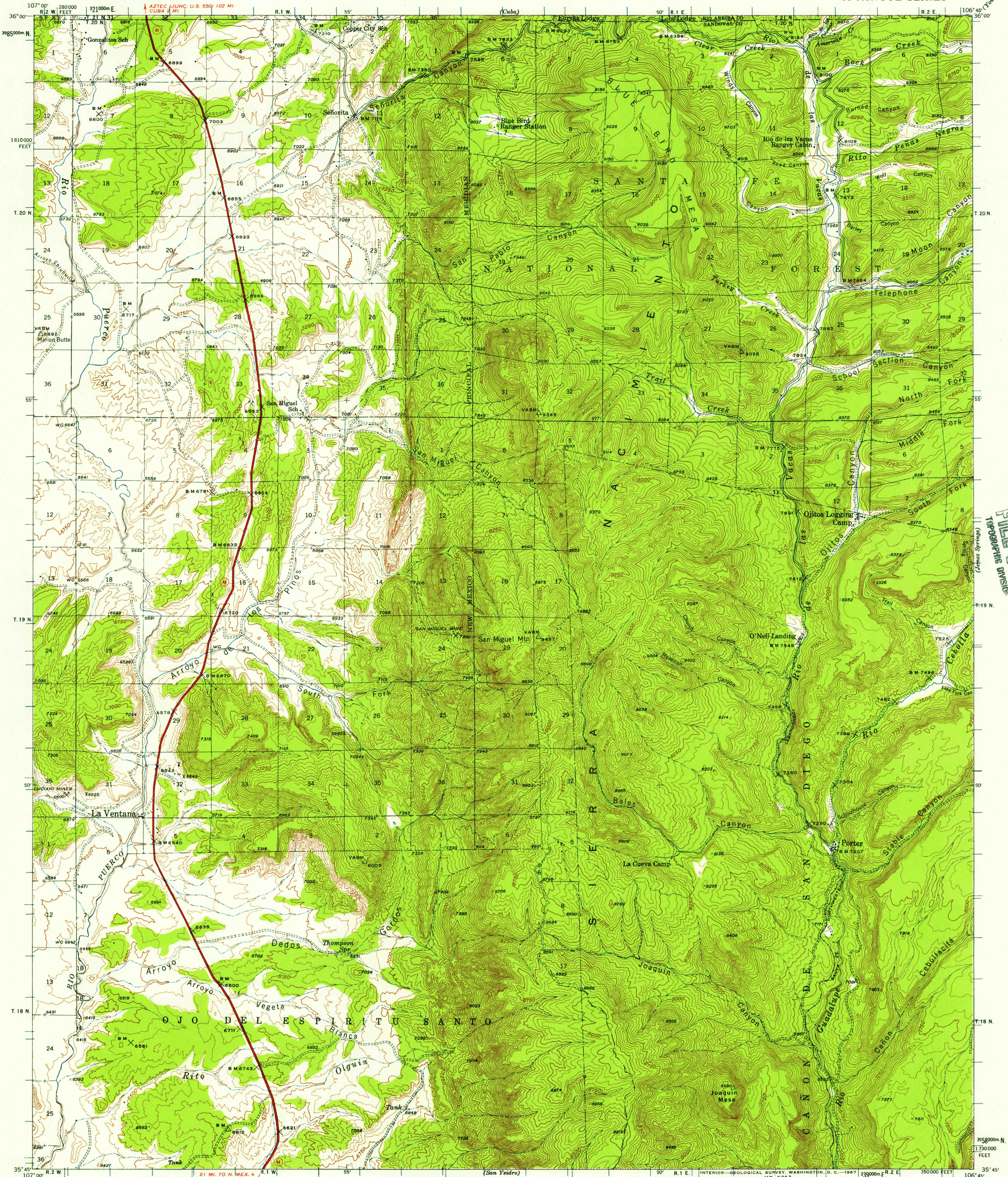


UNITED STATES
DEPARTMENT OF THE INTERIOR
GEOLOGICAL SURVEY

NEW MEXICO
LA VENTANA QUADRANGLE
15-MINUTE SERIES

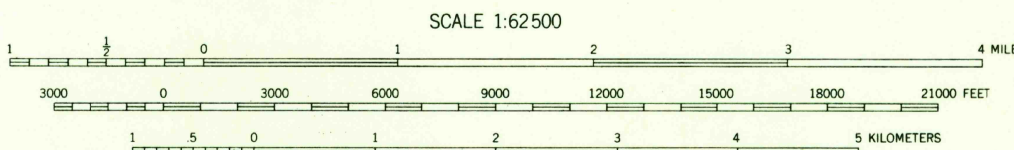


U.S.G.S.
FILE COPY
TOPOGRAPHIC DIVISION
(Defeat Springs)

Topography by C. R. Fisher, S. T. Penick
and C. E. Walker.
Surveyed in 1938 and 1939

ROAD CLASSIFICATION
Heavy-duty ——— Light-duty ———
Medium-duty ——— Unimproved dirt ———
U. S. Route State Route

TRUE NORTH
MAGNETIC NORTH
APPROXIMATE MEAN
DECLINATION, 1939



Section lines omitted in
T. 21 N., R. 1 E. because of
insufficient data

USGS
Historical File
Topographic Division
U.S.G.S.
FILE COPY
TOPOGRAPHIC DIVISION

Polyconic projection. 1927 North American datum
10,000-foot grid based on New Mexico (Central)
rectangular coordinate system
1000-meter Universal Transverse Mercator
grid ticks, zone 13, shown in blue

LA VENTANA, N. MEX.

N 3545-W 10645/15

1939

SEP - 4 1957

FOR SALE BY U. S. GEOLOGICAL SURVEY, DENVER 2, COLORADO OR WASHINGTON 25, D. C.
A FOLDER DESCRIBING TOPOGRAPHIC MAPS AND SYMBOLS IS AVAILABLE ON REQUEST

2130