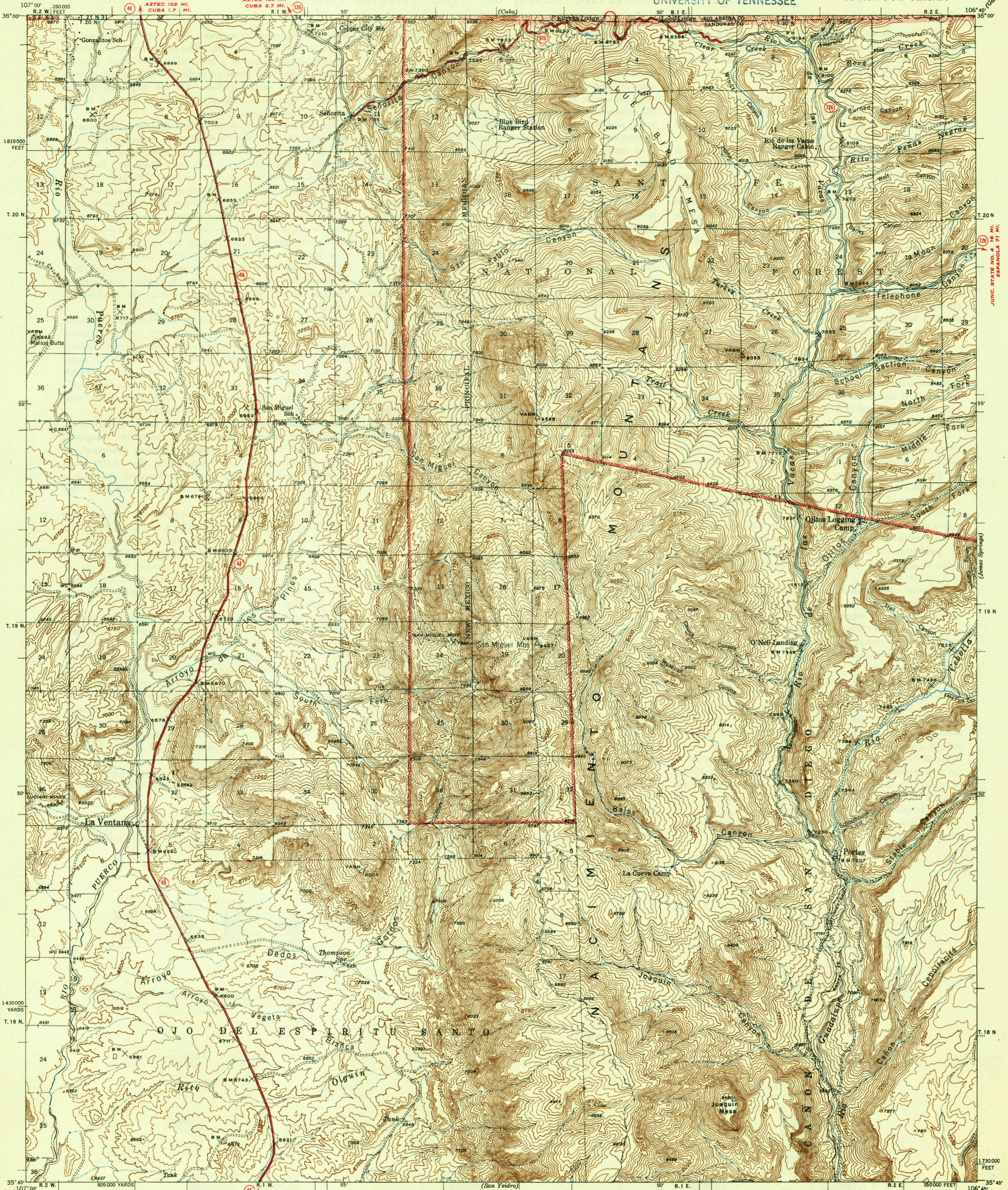


557.3  
4587



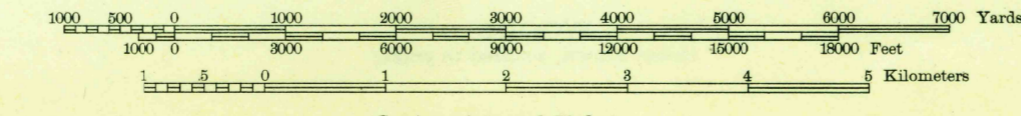
Topography by C. R. Fisher, S. T. Penick,  
and C. E. Walker.  
Surveyed in 1938 and 1939

Scale 1:62500  
1 inch = 1 mile

Section lines omitted in  
T. 21 N., R. 1 E. because of  
insufficient data

Polyconic projection. 1927 North American datum  
5000 yard grid based on U. S. zone system, E  
10000 foot grid based on New Mexico (Central)  
rectangular coordinate system

TRUE NORTH  
MAGNETIC NORTH  
APPROXIMATE MEAN  
DECLINATION, 1939



ROUTES USUALLY TRAVELED  
HARD IMPROVED SURFACES  
OTHER SURFACE IMPROVEMENTS  
U. S. ROUTE 1943 STATE ROUTE

LA VENTANA, N. MEX.  
Edition of 1943

N3545-W10645/15