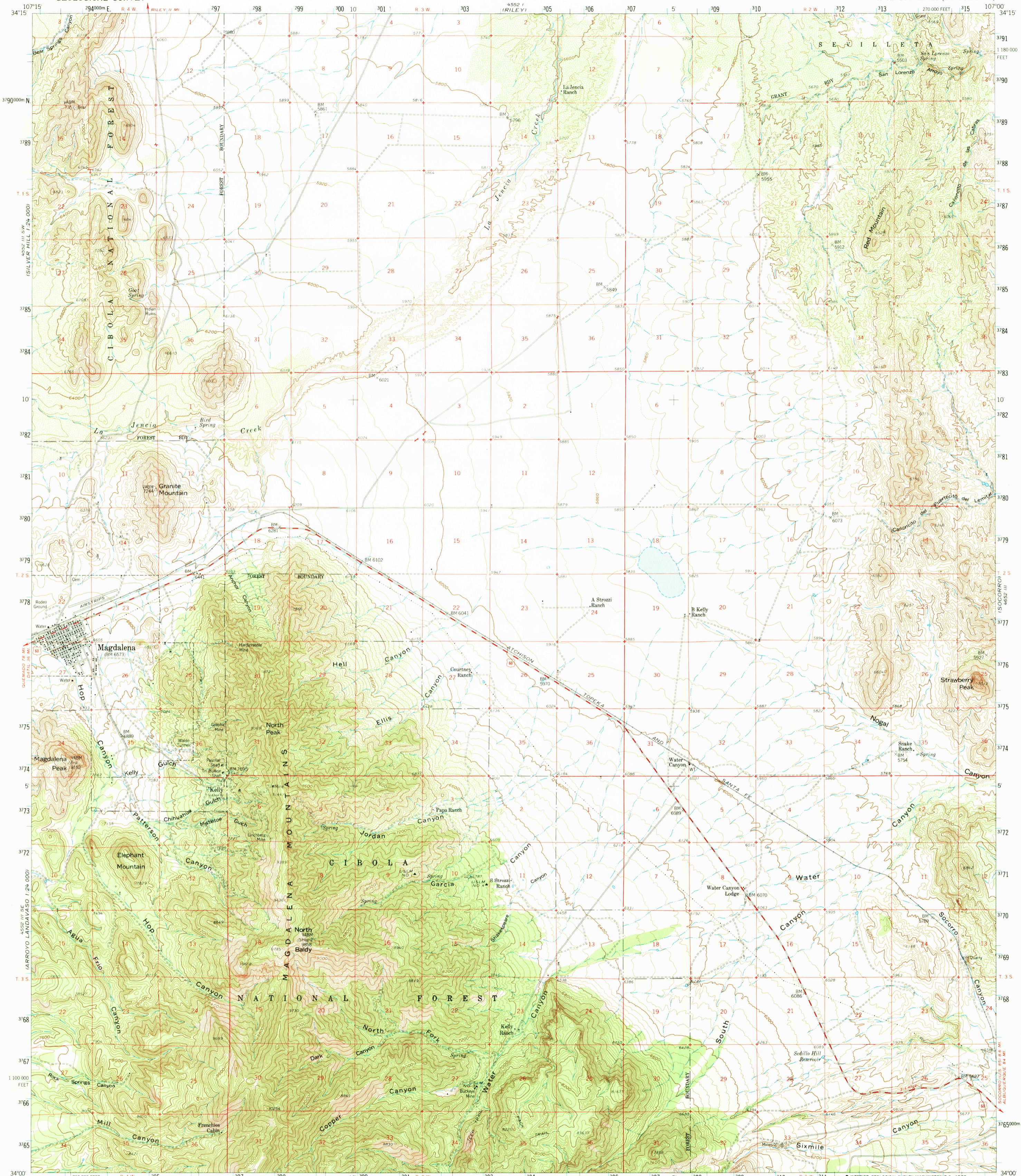
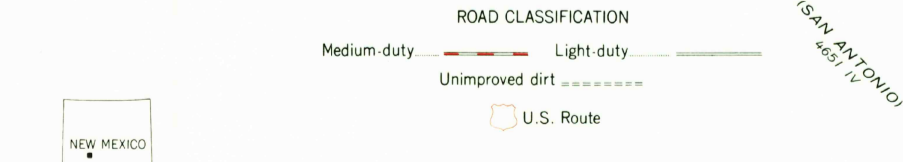
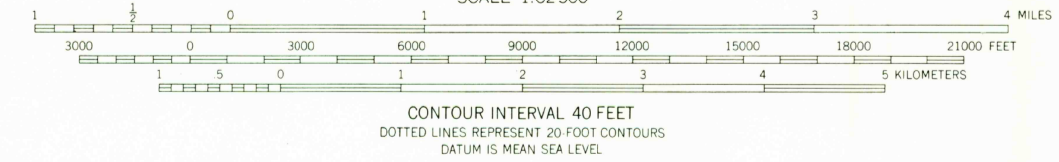
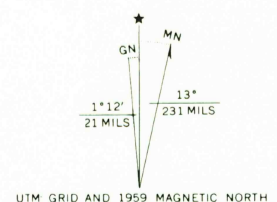


15° 24' 15" N
107° 00' 00" W



Mapped, edited, and published by the Geological Survey
Control by USGS and USC&GS
Topography from aerial photographs by photogrammetric methods
Aerial photographs taken 1956. Field check 1959
Polyconic projection, 1927 North American datum
10,000-foot grid based on New Mexico coordinate system,
central zone
1000-meter Universal Transverse Mercator grid ticks,
zone 13, shown in blue



THIS MAP COMPLIES WITH NATIONAL MAP ACCURACY STANDARDS
FOR SALE BY U. S. GEOLOGICAL SURVEY, DENVER, COLORADO 80225, OR RESTON, VIRGINIA 22092
A FOLDER DESCRIBING TOPOGRAPHIC MAPS AND SYMBOLS IS AVAILABLE ON REQUEST



USGS NMD HISTORICAL MAP
MAR 30 1989

MAGDALENA, N. MEX.
N3400-W10700/15
1959
AMS 4552 II-SERIES V781

15° 24' 15" N
107° 00' 00" W