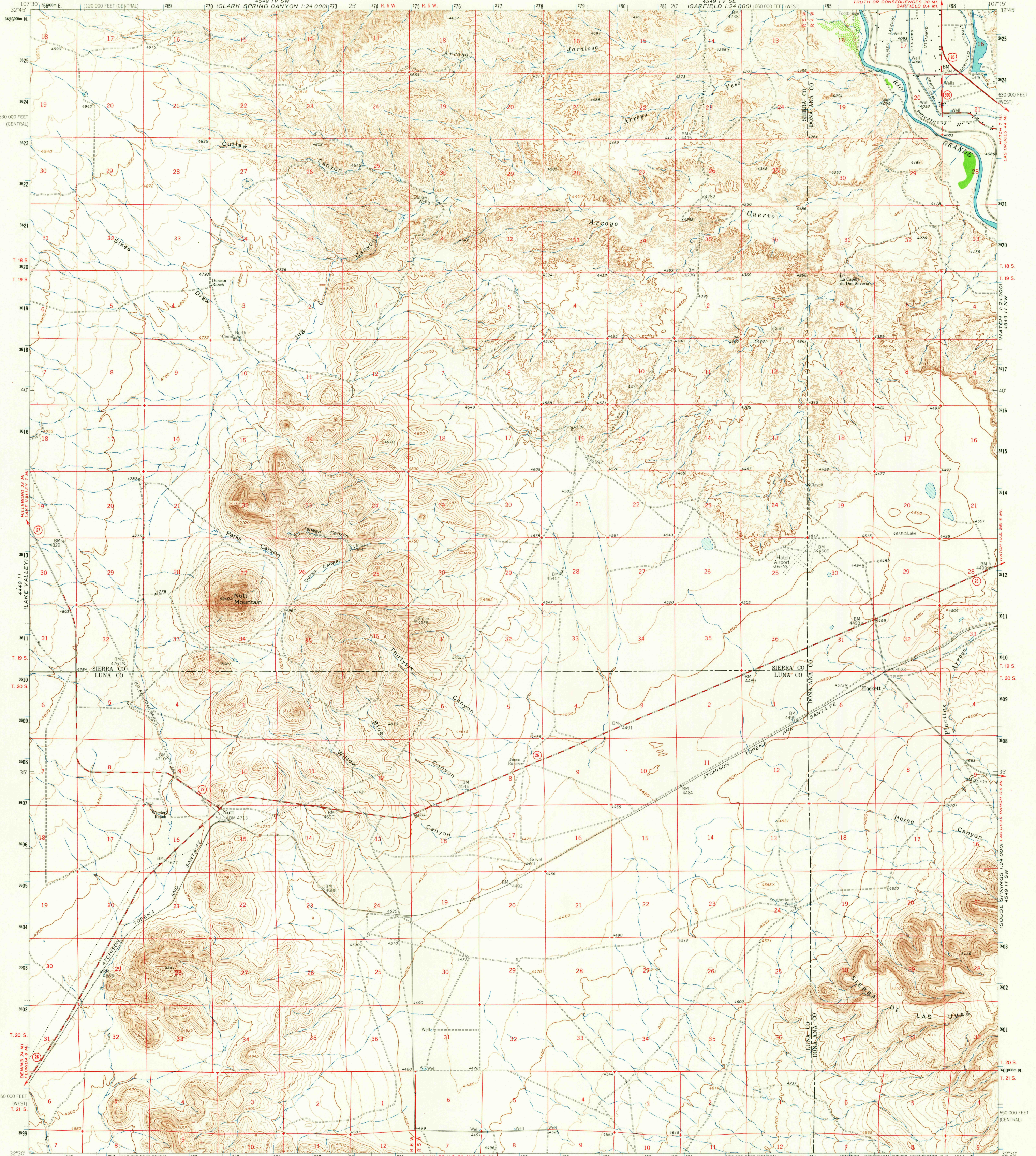


UNITED STATES
DEPARTMENT OF THE INTERIOR
GEOLOGICAL SURVEY

NUTT QUADRANGLE
NEW MEXICO
15 MINUTE SERIES (TOPOGRAPHIC)



Mapped, edited, and published by the Geological Survey

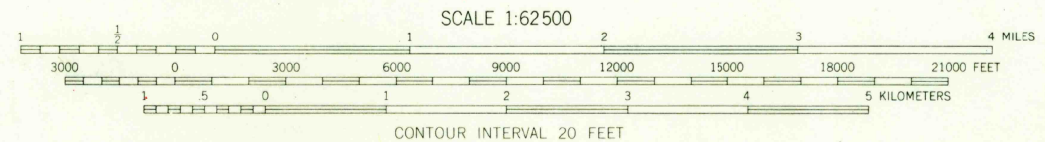
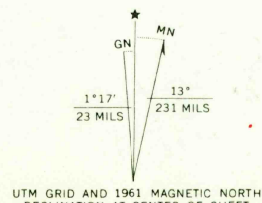
Control by USGS and USC&GS

Topography by photogrammetric methods from aerial photographs taken 1956 and 1959. Field checked 1958 and 1961

Polyconic projection. 1927 North American datum

10,000-foot grids based on New Mexico coordinate system, west and central zones

1000 meter Universal Transverse Mercator grid ticks, zone 13, shown in blue



USGS
Historical File
Topographic Division

ROAD CLASSIFICATION	
Heavy-duty	Light-duty
Medium-duty	Unimproved dirt
U.S. Route	State Route

The NE quarter of this area also covered by 7.5 minute 1:24,000 scale map: Arroyo Cuervo 1958

THIS MAP COMPLIES WITH NATIONAL MAP ACCURACY STANDARDS
FOR SALE BY U.S. GEOLOGICAL SURVEY, DENVER 25, COLORADO OR WASHINGTON 25, D.C.
A FOLDER DESCRIBING TOPOGRAPHIC MAPS AND SYMBOLS IS AVAILABLE ON REQUEST

NUTT, N. MEX.
N3230-W10715/15
1961
MAR 23 1964
AMS 4549 111-SERIES V781