

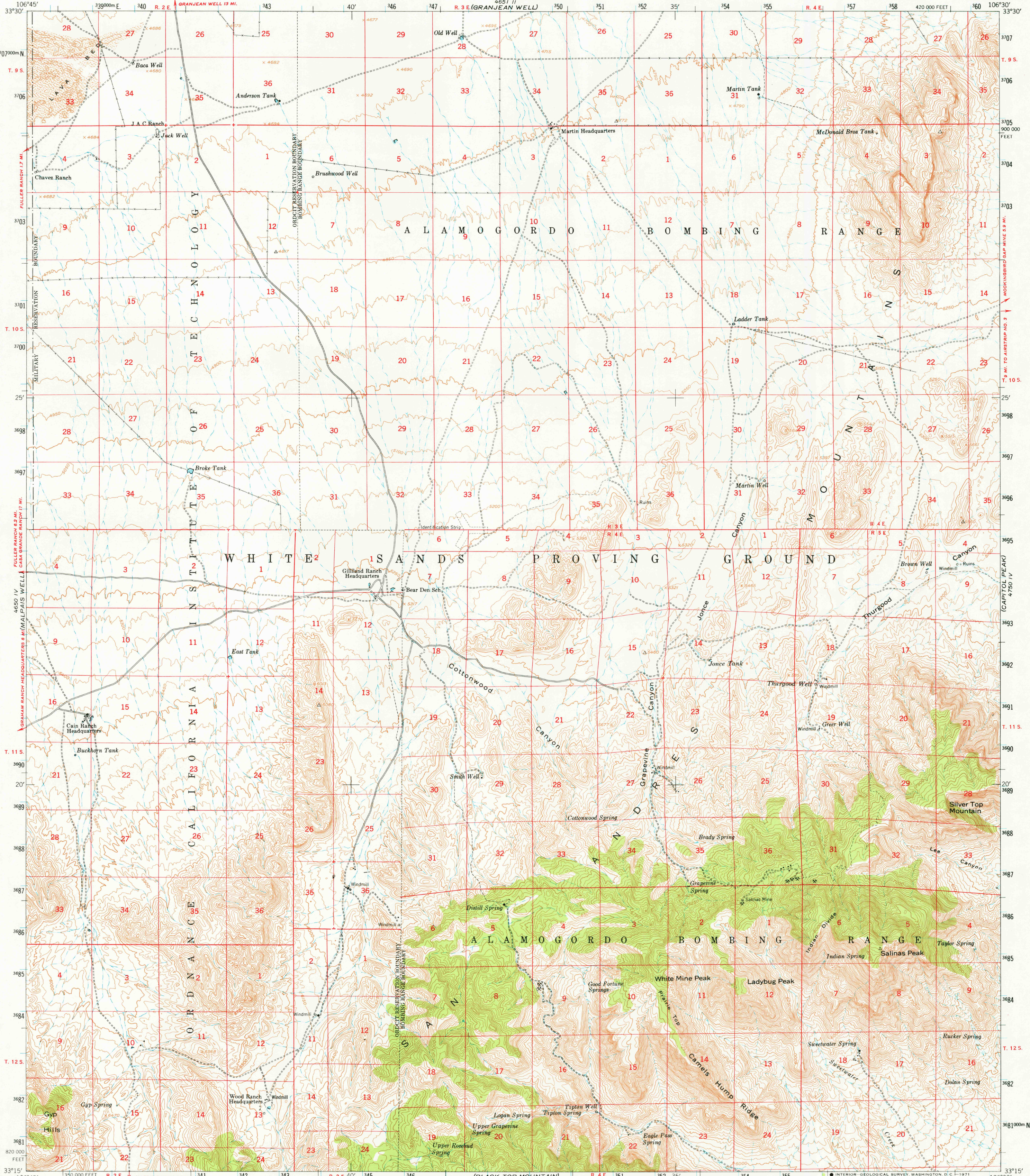
(See 11)

(See 11)

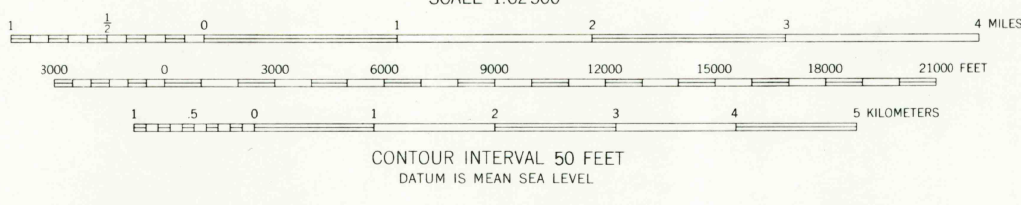
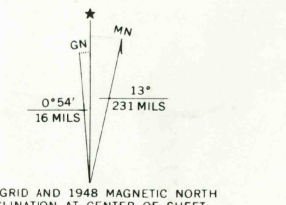
UNITED STATES DEPARTMENT OF THE INTERIOR GEOLOGICAL SURVEY

UNITED STATES DEPARTMENT OF THE ARMY CORPS OF ENGINEERS

SALINAS PEAK QUADRANGLE NEW MEXICO-SOCORRO CO. 15 MINUTE SERIES (TOPOGRAPHIC)



Mapped by the Army Map Service... Published for civil use by the Geological Survey... Control by US&GS, USGS, and USCE... Topography from aerial photographs by photogrammetric methods... Aerial photographs taken 1946-1947. Culture revised from aerial photographs taken 1948. Field check 1948... Polyconic projection. 1927 North American datum... No distinction is made between dwellings, barns, commercial and industrial buildings... Unchecked elevations are shown in brown... 1000-meter Universal Transverse Mercator grid ticks zone 13, shown in blue



ROAD CLASSIFICATION table with columns for road types (Heavy duty, Medium-duty, Light-duty, Unimproved dirt) and their corresponding line styles.



THIS MAP COMPLIES WITH NATIONAL MAP ACCURACY STANDARDS... FOR SALE BY U.S. GEOLOGICAL SURVEY, DENVER, COLORADO 80225 OR WASHINGTON, D.C. 20242... A FOLDER DESCRIBING TOPOGRAPHIC MAPS AND SYMBOLS IS AVAILABLE ON REQUEST

SALINAS PEAK, N. MEX. N3315-W10630/15 1948 AMS 4650 I-SERIES V781

(See 11)