

VAL VERDE

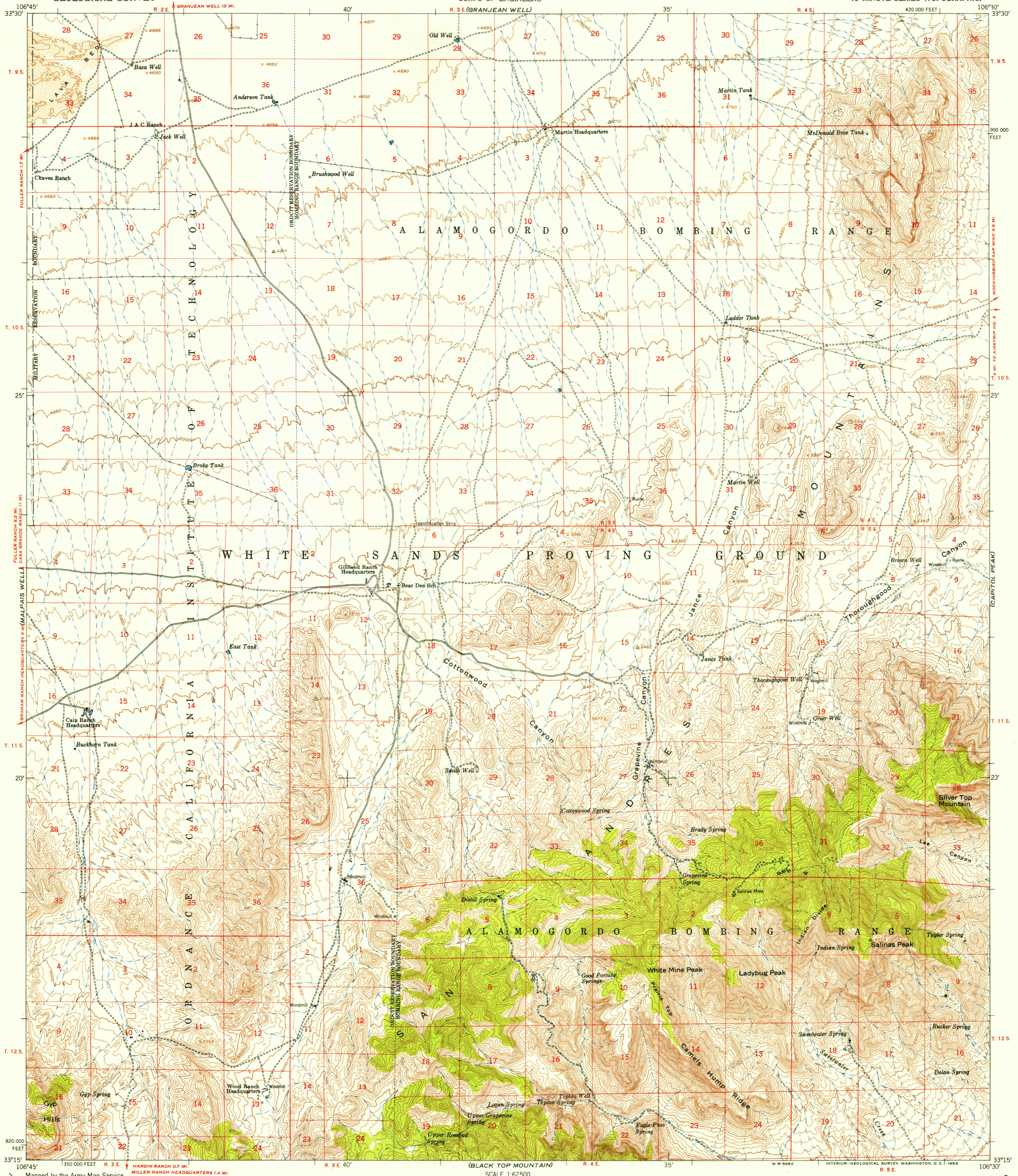
UNITED STATES
DEPARTMENT OF THE INTERIOR
GEOLOGICAL SURVEY

UNITED STATES
DEPARTMENT OF THE ARMY
CORPS OF ENGINEERS

U.S.G.S.
FILE COPY
TOPOGRAPHIC DIVISION

SALINAS PEAK QUADRANGLE
NEW MEXICO-SOCORRO CO.
15 MINUTE SERIES (TOPOGRAPHIC)

MOCKINGBIRD GA.



ISOWELL

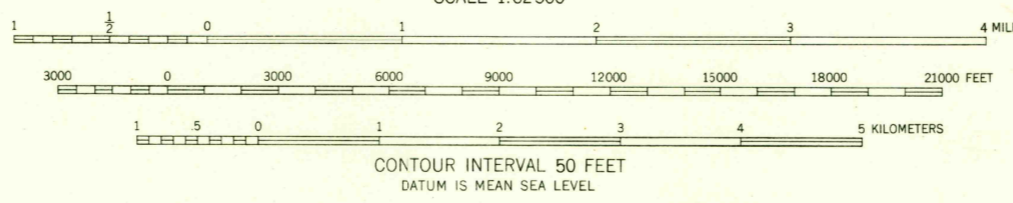
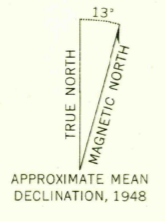
Mapped by the Army Map Service
Published for civil use by the Geological Survey
Control by USC&GS, USGS, and USCE

Topography from aerial photographs by photogrammetric methods
Aerial photographs taken 1946-1947. Culture revised from aerial
photographs taken 1948. Field check 1948

Polyconic projection. 1927 North American datum
10,000-foot grid based on New Mexico coordinate system,
central zone

No distinction is made between dwellings, barns,
commercial and industrial buildings

Unchecked elevations are shown in brown



USGS
Historical File
Topographic Division

ROAD CLASSIFICATION

Heavy-duty 4 LANE 16 LANE Light-duty

Medium-duty 4 LANE 16 LANE Unimproved dirt

U. S. Route State Route



SALINAS PEAK, N. MEX.
N3315-W10630/15
1948

THIS MAP COMPLIES WITH NATIONAL MAP ACCURACY STANDARDS
FOR SALE BY U. S. GEOLOGICAL SURVEY, FEDERAL CENTER, DENVER, COLORADO OR WASHINGTON 25, D. C.
A FOLDER DESCRIBING TOPOGRAPHIC MAPS AND SYMBOLS IS AVAILABLE ON REQUEST

U.S.G.S.
FILE COPY
TOPOGRAPHIC DIVISION

MAR 22 1955
2080