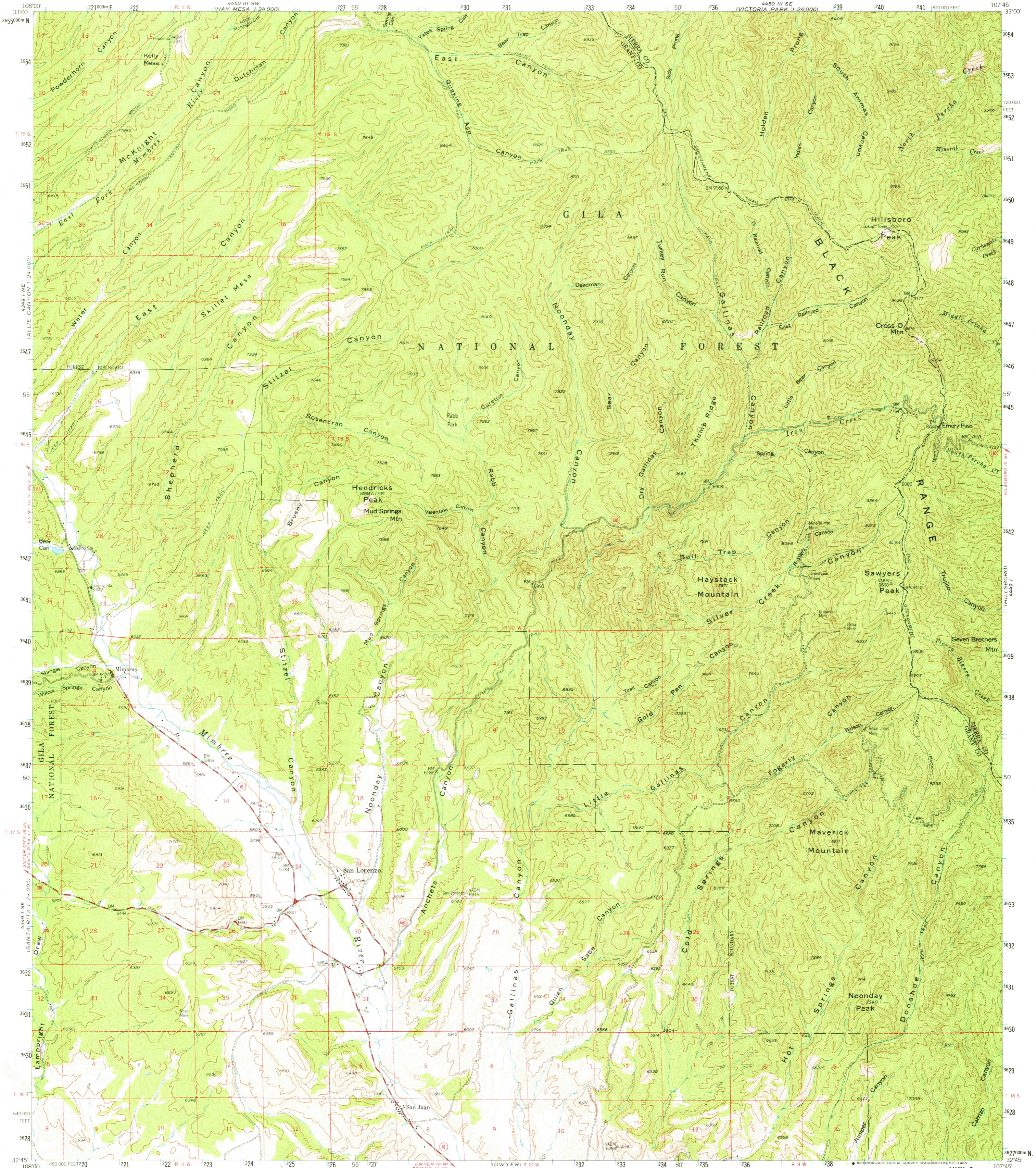


4449 IV SW
APACHE PLATEAU
1:250,000



4349 IV NE
HURON (EAST)
1:250,000

Mapped, edited, and published by the Geological Survey
Control by USGS, USCGS, and USFS

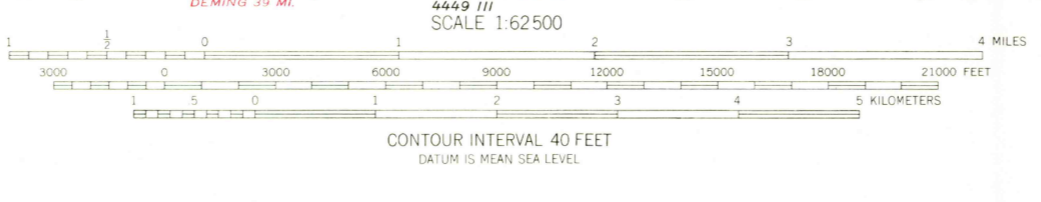
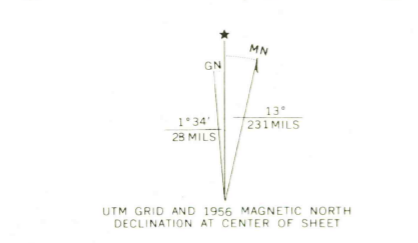
Topography from aerial photographs by photogrammetric methods
Aerial photographs taken 1945 and 1953. Field check 1956

Polyconic projection. 1927 North American datum
10,000-foot grid based on New Mexico coordinate system,
west zone

1000-meter Universal Transverse Mercator grid ticks,
zone 13, shown in blue

Dashed land lines indicate approximate locations
Land lines are omitted in T. 15 and 16 S.-R. 9 and
10 W., T. 17 S.-R. 9 W. and in part of T. 18 S.-R. 9 W.
because of insufficient data

Unchecked elevations are shown in brown



THIS MAP COMPLIES WITH NATIONAL MAP ACCURACY STANDARDS
FOR SALE BY U. S. GEOLOGICAL SURVEY, DENVER, COLORADO 80225 OR WASHINGTON, D. C. 20242
A FOLDER DESCRIBING TOPOGRAPHIC MAPS AND SYMBOLS IS AVAILABLE ON REQUEST



SAN LORENZO, N. MEX.
N3245-W10745/15
1956
AMS 4449 IV-SERIES V781

4449 IV SW
APACHE PLATEAU
1:250,000