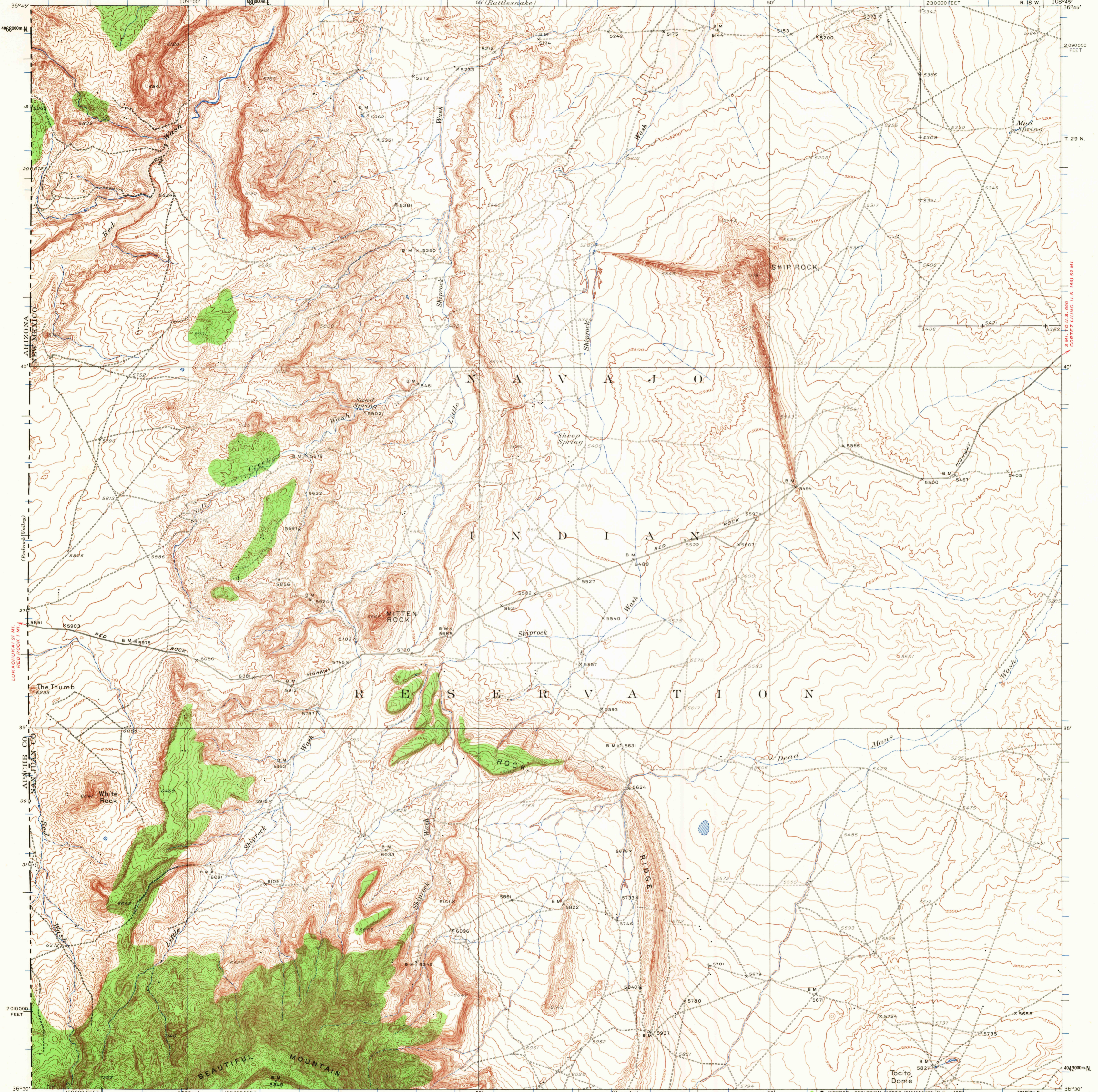


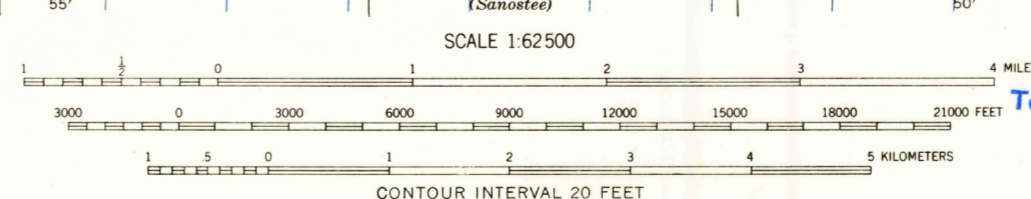
UNITED STATES  
DEPARTMENT OF THE INTERIOR  
GEOLOGICAL SURVEY

NEW MEXICO  
SHIP ROCK QUADRANGLE  
R. 18 W. T. 29 N.



Topography by Max J. Gleissner, S.G. Lunde, R.O. Davis,  
M.C. McClellan, R.G. Carpenter and John Stricklin  
Surveyed in 1933 and 1934

ROAD CLASSIFICATION  
Light duty ——— Unimproved dirt - - - - -



USGS  
Historical File  
Topographic Division  
U.S.G.S.

Polyconic projection, 1927 North American datum  
10,000-foot grid based on New Mexico (West)  
rectangular coordinate system  
1000-meter Universal Transverse Mercator grid ticks,  
zone 12, shown in blue

FILE COPY  
TOPOGRAPHIC DIVISION

SHIP ROCK, N. MEX.  
N3630-W10845/5x175  
NOV 8 1968  
1934

FOR SALE BY U.S. GEOLOGICAL SURVEY, DENVER, COLORADO 80225 OR WASHINGTON, D. C. 20242  
A FOLDER DESCRIBING TOPOGRAPHIC MAPS AND SYMBOLS IS AVAILABLE ON REQUEST

3 MI. TO U.S. 66  
CORTEZ (U.S. 160) 5 MI.