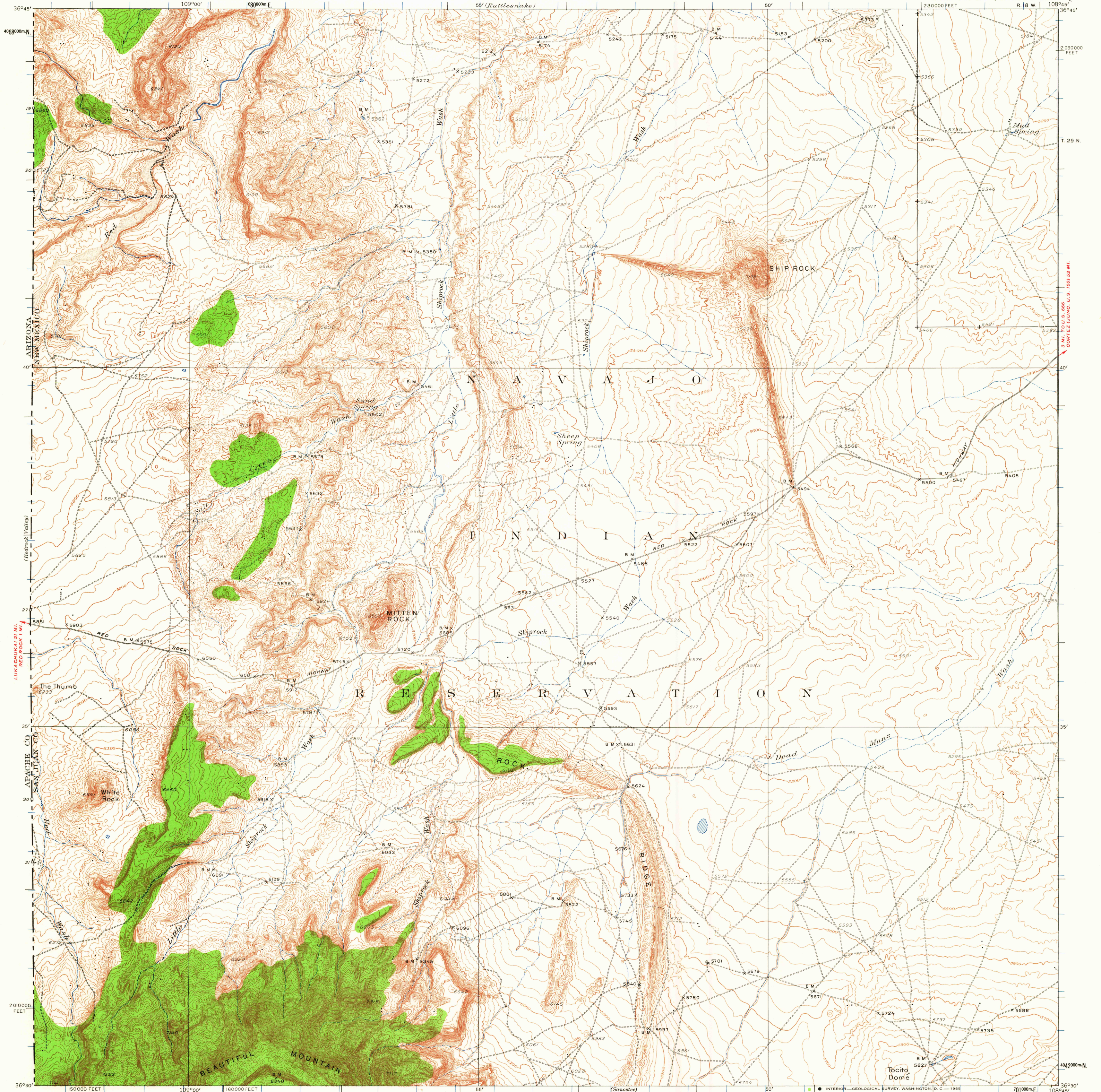


UNITED STATES
DEPARTMENT OF THE INTERIOR
GEOLOGICAL SURVEY

NEW MEXICO
SHIP ROCK QUADRANGLE
R. 18 W. T. 29 N.

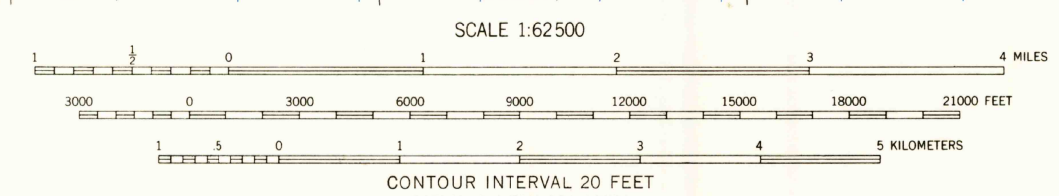


36°45'
4000000 N
19
20
40
27
35
30
30
2010000
36°30'

109°00'
108°45'

Topography by Max J. Gleissner, S.G. Lunde, R.O. Davis,
M.C. McClellan, R.G. Carpenter and John Stricklin
Surveyed in 1933 and 1934.

ROAD CLASSIFICATION
Light-duty ——— Unimproved dirt - - - - -



USGS
Historical File
Topographic Division

Polyconic projection. 1927 North American datum
10,000-foot grid based on New Mexico (West)
rectangular coordinate system.
1000-meter Universal Transverse Mercator grid ticks,
zone 12, shown in blue.

SHIP ROCK, N. MEX.
N 3630-W 10845/15X175

U.S.G.S.
FILE COPY
TOPOGRAPHIC DIVISION

1934
MAR 1 1965

FOR SALE BY U. S. GEOLOGICAL SURVEY, DENVER 25, COLORADO OR WASHINGTON 25, D. C.
A FOLDER DESCRIBING TOPOGRAPHIC MAPS AND SYMBOLS IS AVAILABLE ON REQUEST

10, 170