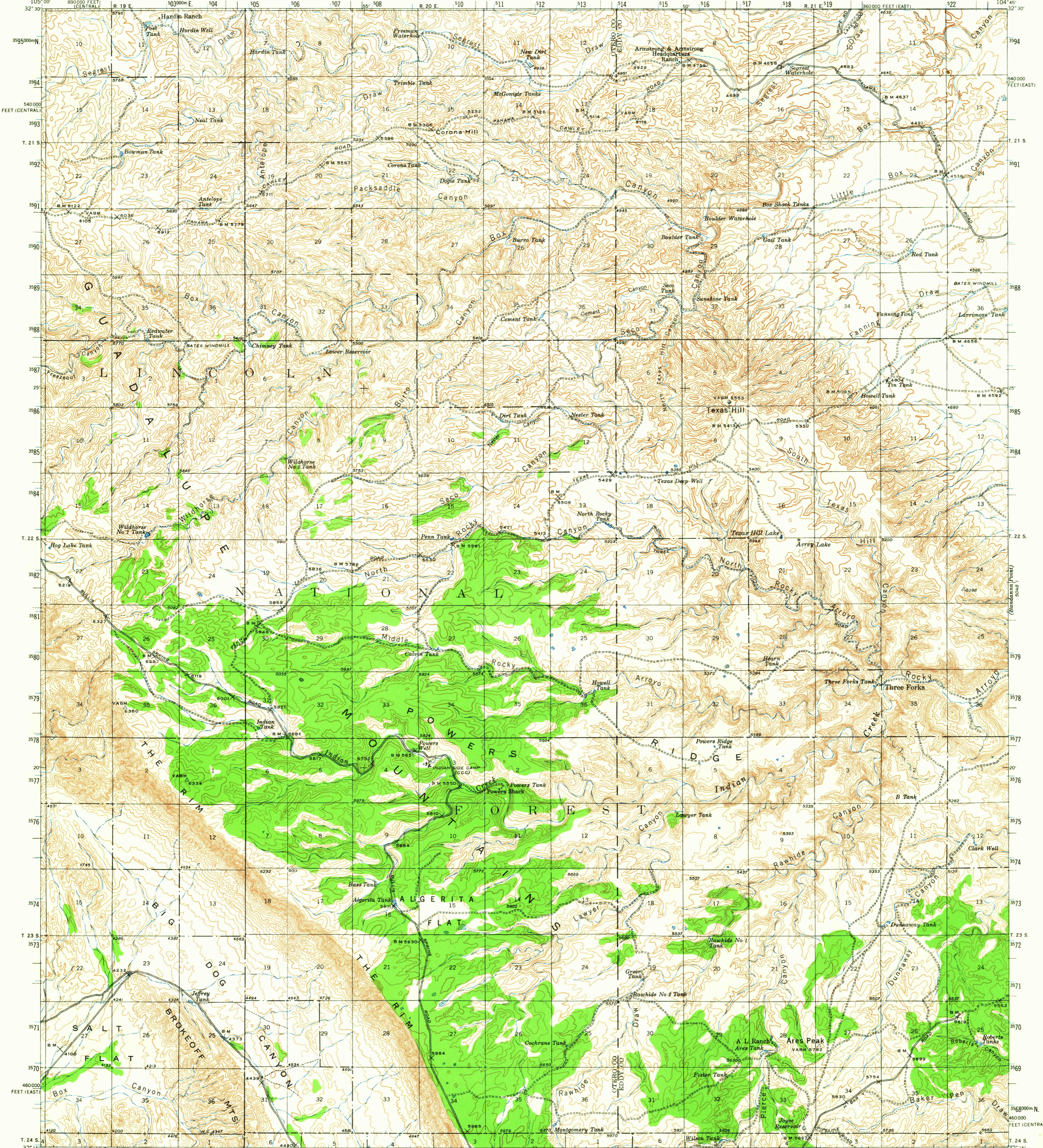
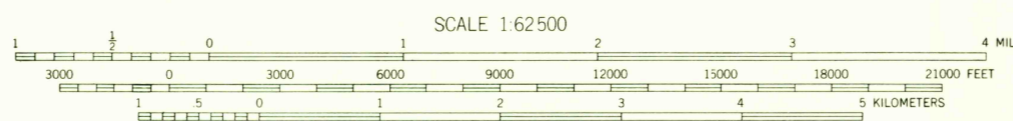
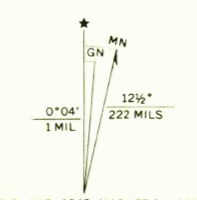


5048 IV (REV. 1-22-1966)  
(Base Contour Interval 1:25,000)



Mapped by the Geological Survey  
1943

ROAD CLASSIFICATION  
Light-duty ——— Unimproved dirt - - - - -



CONTOUR INTERVAL 50 FEET  
DATUM IS MEAN SEA LEVEL

USGS  
Historical File  
Topographic Division

Polycyclic projection, 1927 North American datum  
10,000-foot grids based on New Mexico (East) and  
New Mexico (Central) rectangular coordinate systems  
1000-meter Universal Transverse Mercator grid ticks,  
zone 13, shown in blue

TEXAS HILL, N. MEX.  
N 3215-W 10445/15

1943 2475

AMS 5048 IV—SERIES V781

FOR SALE BY U. S. GEOLOGICAL SURVEY, DENVER, COLORADO 80225 OR WASHINGTON, D. C. 20242  
A FOLDER DESCRIBING TOPOGRAPHIC MAPS AND SYMBOLS IS AVAILABLE ON REQUEST