

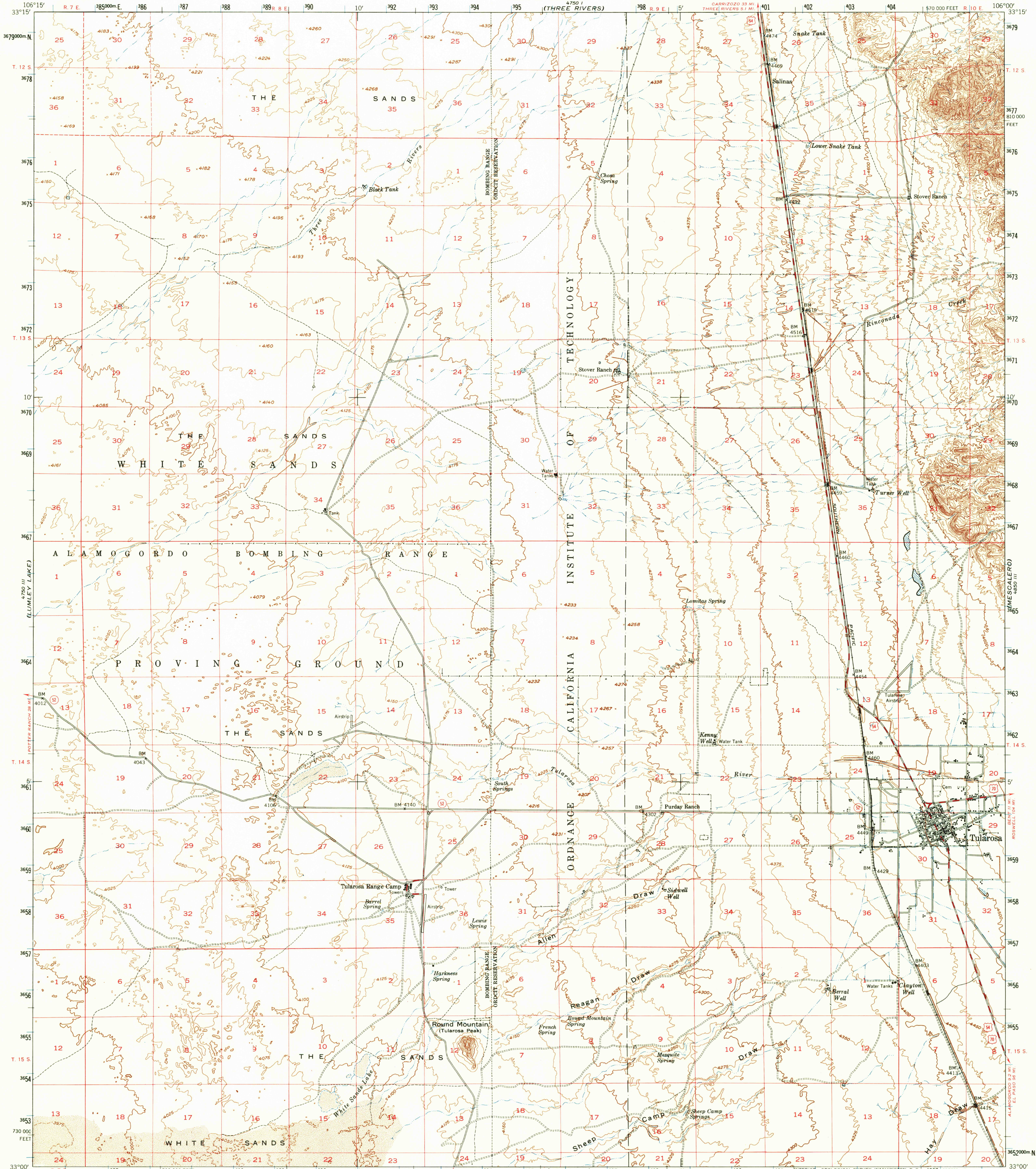
(CAPITOL PEAK)

UNITED STATES  
DEPARTMENT OF THE INTERIOR  
GEOLOGICAL SURVEY

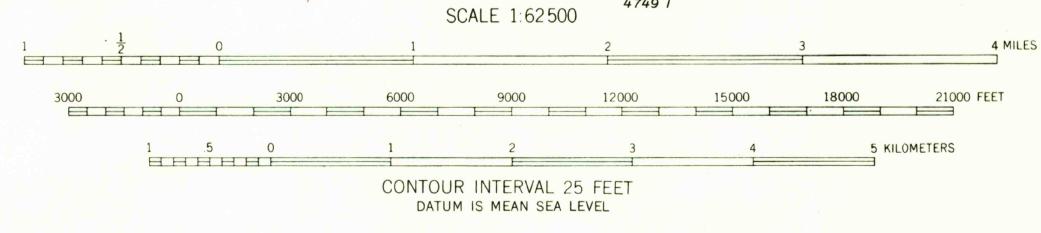
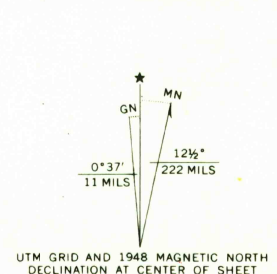
UNITED STATES  
DEPARTMENT OF THE ARMY  
CORPS OF ENGINEERS  
(THREE RIVERS)

TULAROSA QUADRANGLE  
NEW MEXICO—OTERO CO.  
15 MINUTE SERIES (TOPOGRAPHIC)

(SIERRA BLANCA PEAK)



Mapped by the Army Map Service  
Published for civil use by the Geological Survey  
Control by USCGS, USGS, and USCE  
Topography from aerial photographs by photogrammetric methods  
Aerial photographs taken 1946. Culture revised from aerial  
photographs taken 1948. Field check 1948  
Polyconic projection. 1927 North American datum  
10,000-foot grid based on New Mexico coordinate system,  
central zone  
No distinction is made between dwellings, barns,  
commercial and industrial buildings  
Unchecked elevations are shown in brown  
Dashed land lines indicate approximate locations  
Dashed contours shown in shifting sands area  
1000-meter Universal Transverse Mercator grid ticks,  
zone 13, shown in blue



ROAD CLASSIFICATION

Heavy-duty	4 LANE 6 LANE	Light-duty
Medium-duty	2 LANE 4 LANE	Unimproved dirt
U.S. Route		State Route

THIS MAP COMPLIES WITH NATIONAL MAP ACCURACY STANDARDS  
FOR SALE BY U. S. GEOLOGICAL SURVEY, DENVER, COLORADO 80225 OR WASHINGTON, D. C. 20242  
A FOLDER DESCRIBING TOPOGRAPHIC MAPS AND SYMBOLS IS AVAILABLE ON REQUEST

TULAROSA, N. MEX.  
N3300—W10600/15  
1948  
AMS 4750 II—SERIES V781

(POINT OF SANDS)

(ALAMO GORDO)