

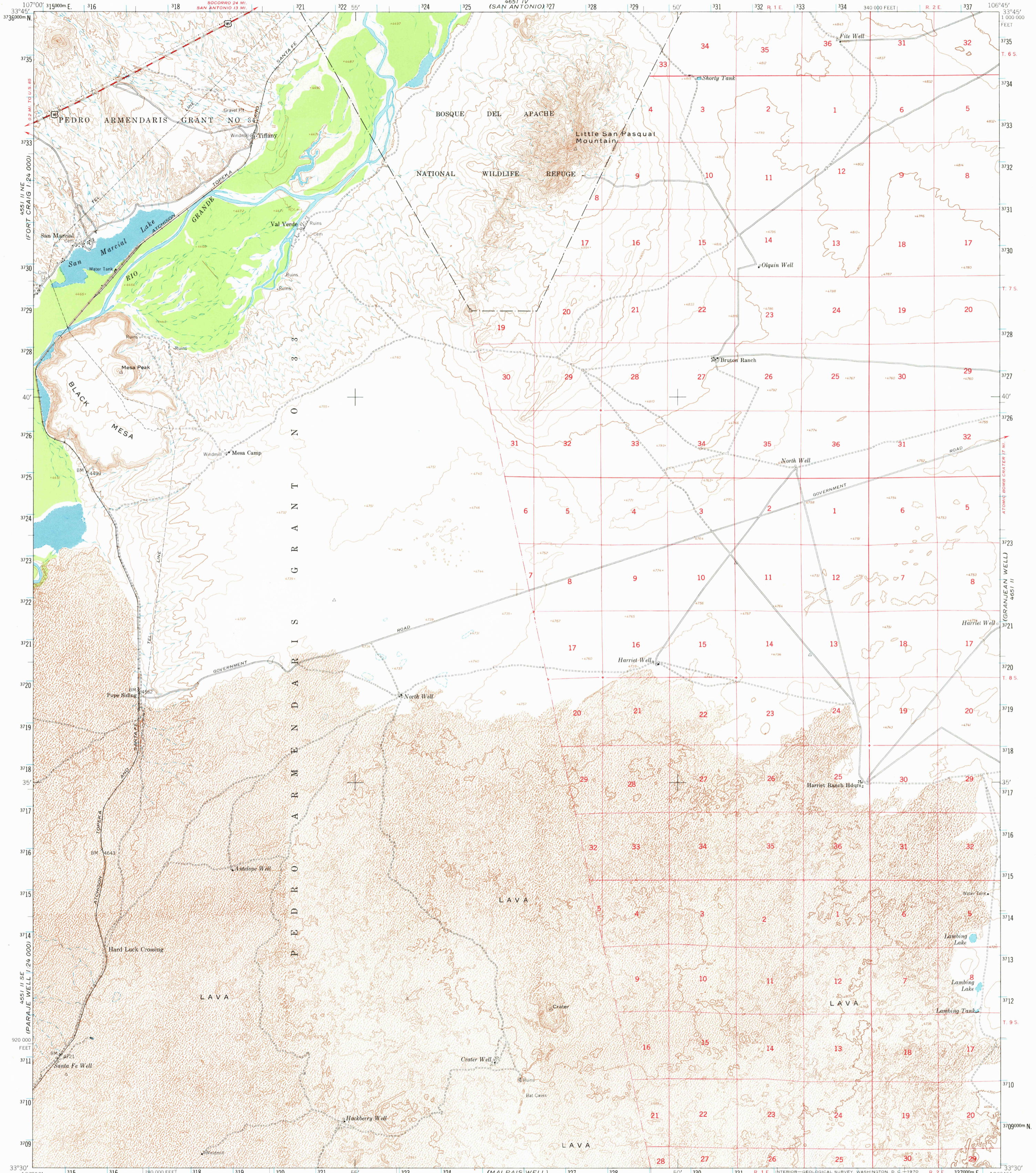
4551 I SE  
(CLENEGA RANCH)  
1:24 000

4651 I  
(CARTHAGE)

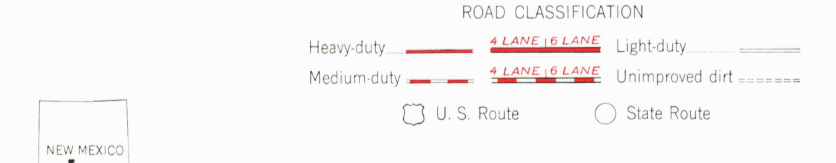
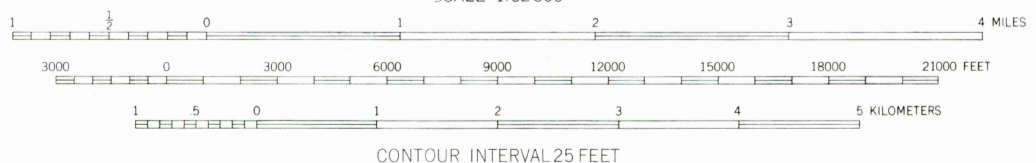
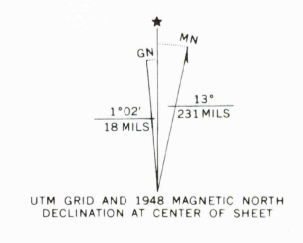
UNITED STATES  
DEPARTMENT OF THE INTERIOR  
GEOLOGICAL SURVEY

UNITED STATES  
DEPARTMENT OF THE ARMY  
CORPS OF ENGINEERS  
4651 IV  
(SAN ANTONIO) 327

VAL VERDE QUADRANGLE  
NEW MEXICO-SOCORRO CO.  
15 MINUTE SERIES (TOPOGRAPHIC)



Map by the Army Map Service  
Published for civil use by the Geological Survey  
Control by USC&GS, USGS, and USCE  
Topography from aerial photographs by multiplex methods  
Aerial photographs taken 1946-1947. Field check 1948  
Culture revised 1948  
Polyconic projection. 1927 North American datum  
10,000-foot grid based on New Mexico coordinate system,  
central zone  
Unchecked elevations are shown in brown  
1000-meter Universal Transverse Mercator grid ticks,  
zone 13, shown in blue



THIS MAP COMPLIES WITH NATIONAL MAP ACCURACY STANDARDS  
FOR SALE BY U. S. GEOLOGICAL SURVEY, DENVER, COLORADO 80225 OR WASHINGTON, D. C. 20242  
A FOLDER DESCRIBING TOPOGRAPHIC MAPS AND SYMBOLS IS AVAILABLE ON REQUEST

VAL VERDE, N. MEX.  
N3330-W10645/15  
1948  
AMS 4651 III--SERIES V781

4551 I SE  
(LAVA 1:24 000)  
4650 I NE

4651 I  
(SALINAS PEAK)