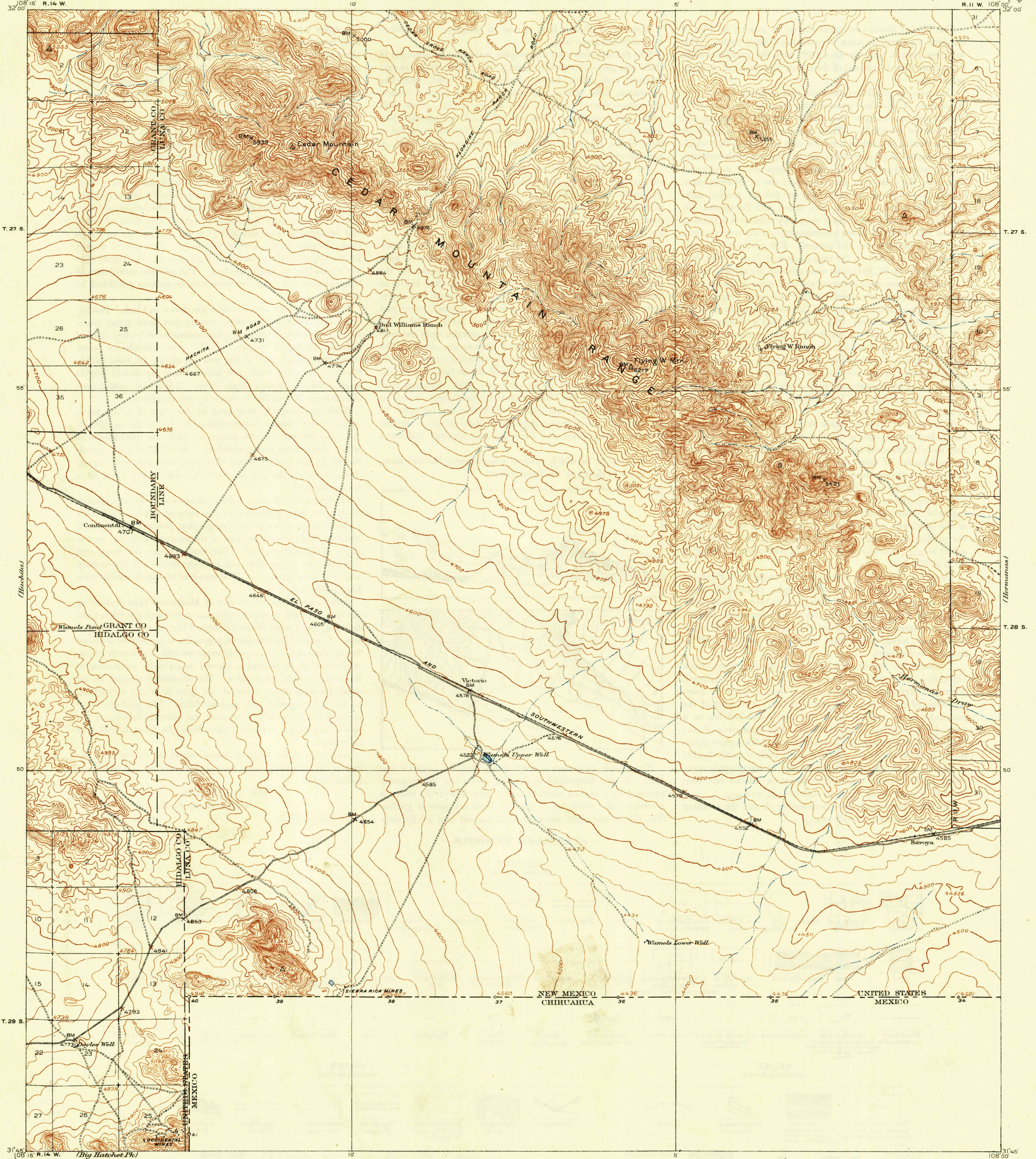


U.S.G.S.
FILE COPY
Inspection and Editing.

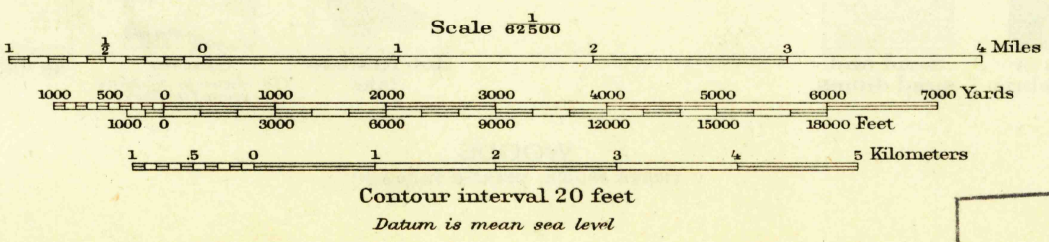
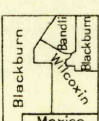
UNITED STATES
DEPARTMENT OF THE INTERIOR
GEOLOGICAL SURVEY

WAR DEPARTMENT
CORPS OF ENGINEERS, U.S. ARMY

NEW MEXICO
VICTORIO QUADRANGLE



(Big Hatchet Pk.)
R.B. Marshall, Chief Geographer.
T.G. Gerdine, Geographer in charge.
Topography by J.E. Blackburn, R.E. Wilcox, and E.M. Bandli.
Control by International Boundary Commission,
U.S. Coast and Geodetic Survey, R.W. Burchard,
Geo. T. Hawkins, and R.B. Steele.
Surveyed in 1917.



Contour interval 20 feet
Datum is mean sea level



USGS
Historical File
Topographic Division

U.S.G.S.
FILE COPY
Inspection and Editing.

Edition of 1918. reprinted 1946
Polyconic projection. North American datum

N. MEX.
VICTORIO
N3145-W10800/15

AUG 8-1946

2135