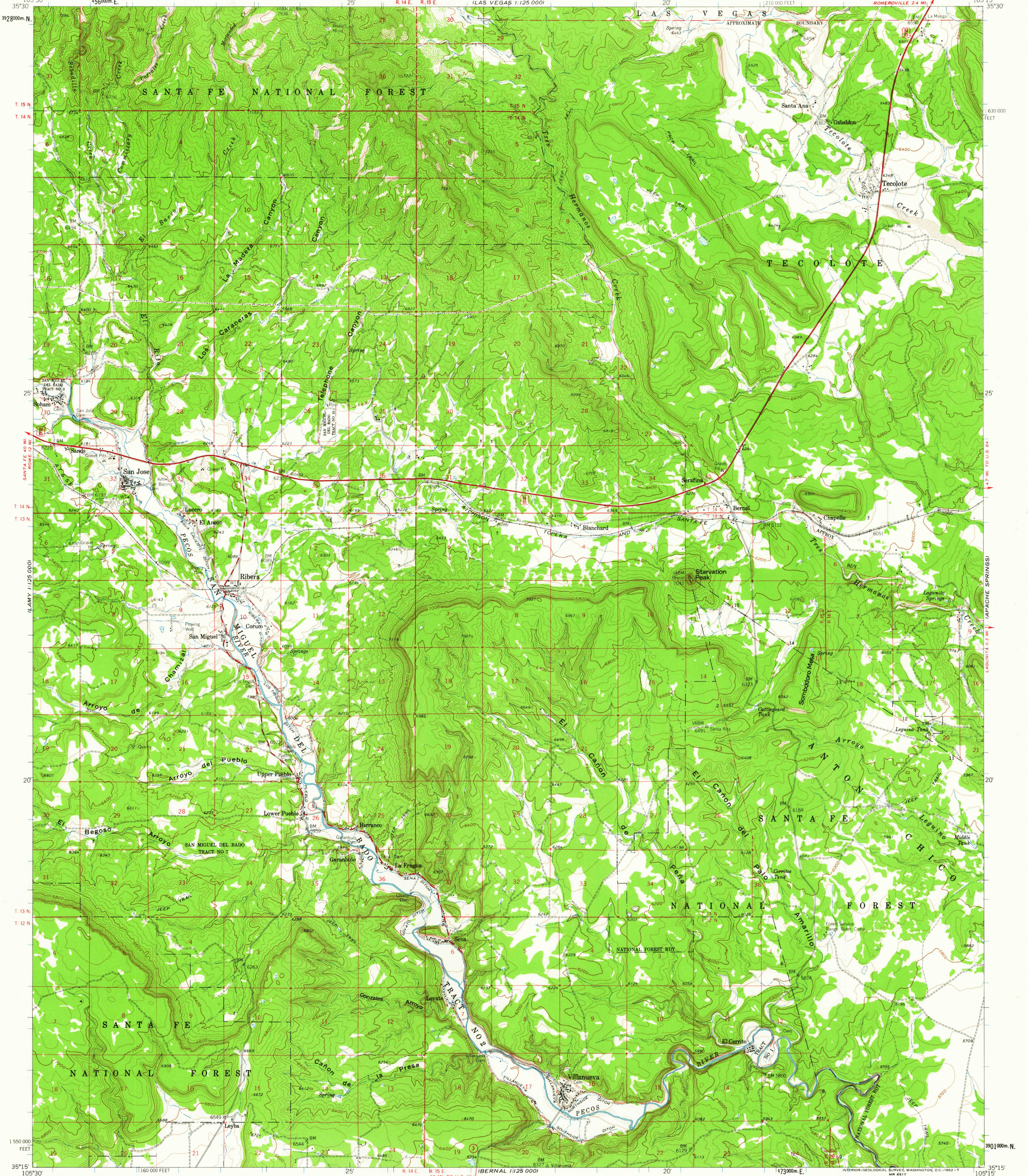


SANTA FE
1:125,000

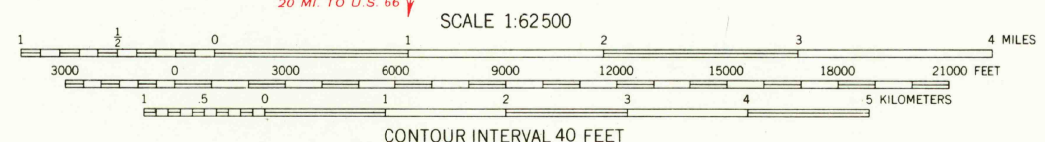
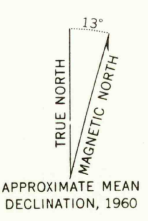
UNITED STATES
DEPARTMENT OF THE INTERIOR
GEOLOGICAL SURVEY

VILLANUEVA QUADRANGLE
NEW MEXICO-SAN MIGUEL CO.
15 MINUTE SERIES (TOPOGRAPHIC)

LAS VEGAS
1:125,000



Mapped, edited, and published by the Geological Survey
Control by USGS and USC&GS
Topography by photogrammetric methods from aerial
photographs taken 1953. Field checked 1960
Polyconic projection. 1927 North American datum
10,000-foot grid based on New Mexico coordinate system,
east zone
1000-meter Universal Transverse Mercator grid ticks,
zone 13, shown in blue
Where omitted, land lines have not been established



ROAD CLASSIFICATION

Heavy duty	Light duty
Medium-duty	Unimproved dirt
U.S. Route	State Route



USGS
Historical File
Topographic Division

VILLANUEVA, N. MEX.
N3515-W10515/15
1960

THIS MAP COMPLIES WITH NATIONAL MAP ACCURACY STANDARDS
FOR SALE BY U.S. GEOLOGICAL SURVEY, DENVER 25, COLORADO OR WASHINGTON 25, D.C.
A FOLDER DESCRIBING TOPOGRAPHIC MAPS AND SYMBOLS IS AVAILABLE ON REQUEST

REFERENCE
1:125,000

FEB 25 1963

2655