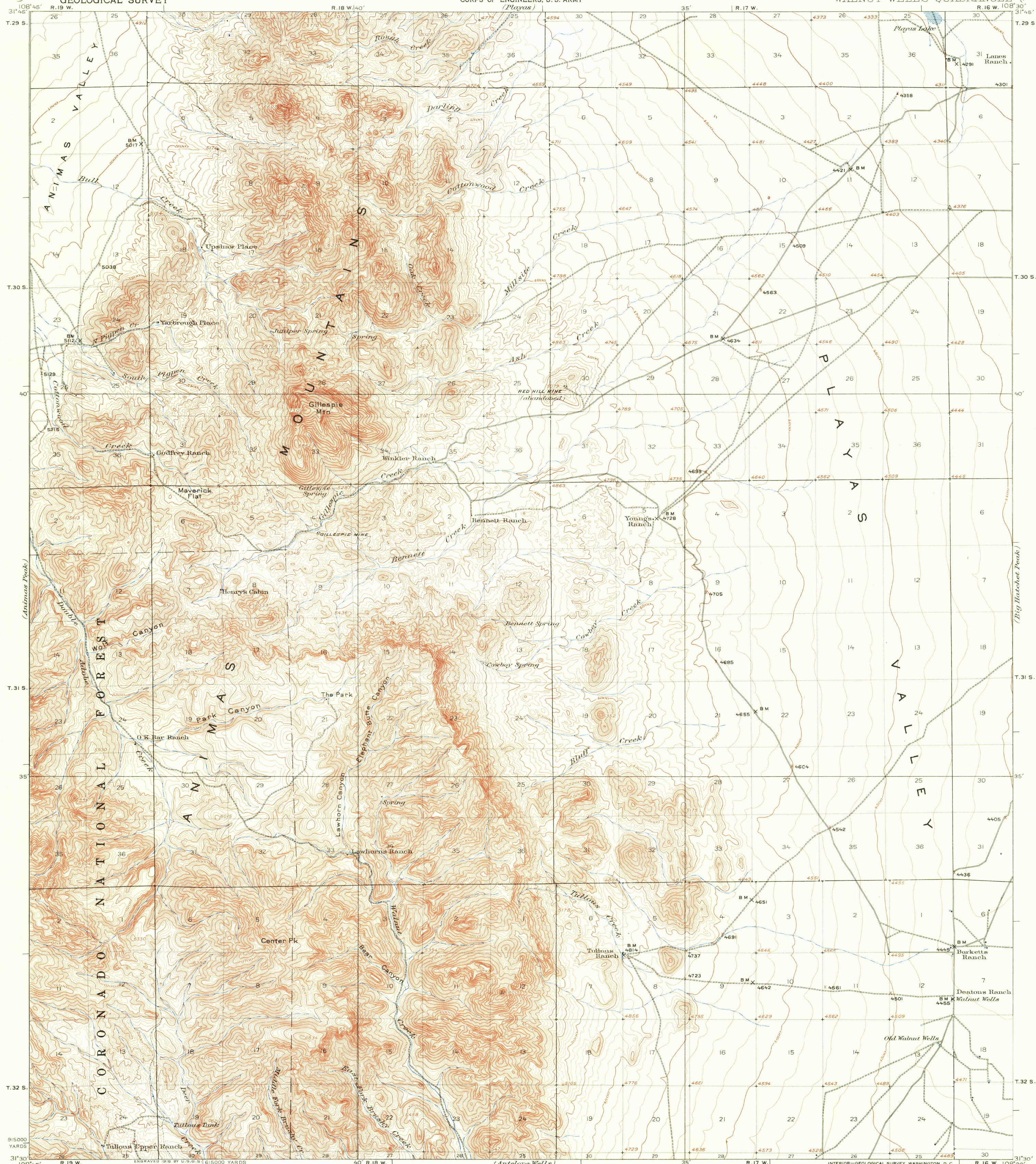


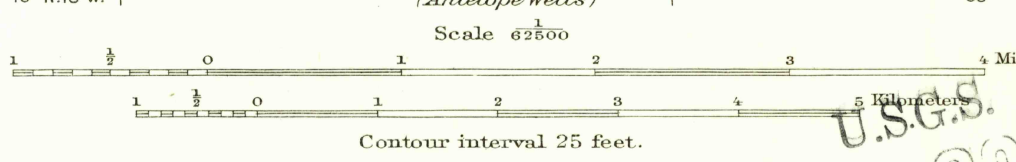
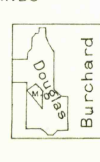
UNITED STATES
DEPARTMENT OF THE INTERIOR
GEOLOGICAL SURVEY

WAR DEPARTMENT
CORPS OF ENGINEERS, U. S. ARMY
(Playas)

NEW MEXICO
(HIDALGO COUNTY)
WALNUT WELLS QUADRANGLE



R.B. Marshall, Chief Geographer.
T.G. Gardine, Geographer in charge.
Topography by R. W. Burchard, G. C. Douglas,
and C. F. Merten.
Control by R. W. Burchard, R. B. Steele,
and B. H. Yoakum.
Surveyed in 1917-1918.



INTERIOR—GEOLOGICAL SURVEY, WASHINGTON, D. C.
Polyconic projection, North American datum.
5000 yard grid based upon U.S. zone system E.
WALNUT WELLS
Edition of 1923.
(First published in 1918)

U.S.G.S.
FILE COPY
TOPOGRAPHIC DIVISION

USGS
Historical File
Topographic Division

WALNUT WELLS
Edition of 1923.
(First published in 1918)

N. Max.
JAN 17 1963
T/O