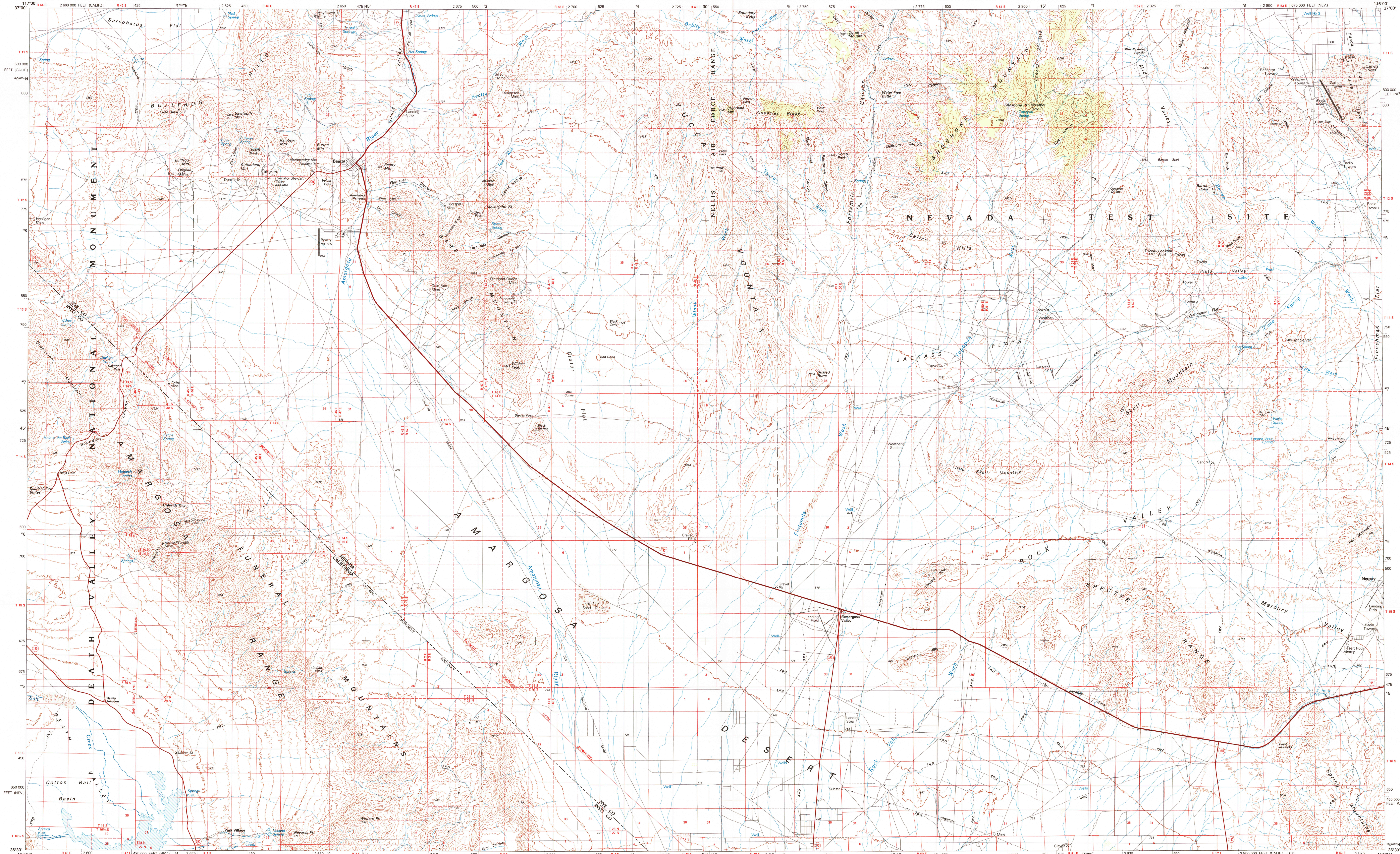


BEATTY, NEVADA—CALIFORNIA

30X60 MINUTE SERIES (TOPOGRAPHIC)



Beatty
NEVADA—CALIFORNIA

1:100 000-scale metric
topographic map

RECEIVED
JUL 31 1999
USGS/MSD
HISTORICAL MAP ARCHIVES

30 X 60 MINUTE QUADRANGLE
SHOWING

- Contours and elevations in meters
- Highways, roads and other manmade structures
- Water features
- Woodland areas
- Geographic names

GEOLOGICAL SURVEY

1986

Produced by the United States Geological Survey
Compiled from USGS 1:24 000 and 1:62 500-scale topographic maps dated 1952-1984. Planimetry revised from aerial photographs taken 1983 and other source data. Revised information not field checked. Map edited 1986.

Projection and 10 000-meter grid, zone 11, Universal Transverse Mercator
25 000-foot grid ticks based on Nevada coordinate system, central zone and California coordinate system, zone 4, 1927 North American Datum
To place on the predicted North American Datum 1983 move the projection lines 8 centimeters north and 79 meters east
There may be private inholdings within the boundaries of the National or State reservations shown on this map

CONTOUR INTERVAL 50 METERS
NATIONAL GEODETIC VERTICAL DATUM OF 1929

THIS MAP COMPLIES WITH NATIONAL MAP ACCURACY STANDARDS

FOR SALE BY U.S. GEOLOGICAL SURVEY,
P.O. BOX 25286, DENVER, COLORADO, 80225

CONVERSION TABLE		DECLINATION DIAGRAM		ADJOINING MAPS		
Meters	Feet	MAGNETIC		1	2	3
1	3.2808	1986		4	5	
2	6.5617	1987		6	7	8
3	9.8425	1988				
4	13.1234	1989				
5	16.4042	1990				
6	19.6850	1991				
7	22.9659	1992				
8	26.2467	1993				
9	29.5276	1994				
10	32.8084	1995				

To convert meters to feet multiply by 3.2808
To convert feet to meters multiply by 0.3048

UTM grid convergence (GN and 1983 magnetic declination (MD) center of map Diagram is approximate

Last Chance Range
Palmer Mesa
Palmer Range
Sullivan Valley
Tullahoma Range
Dewey Hills
Death Valley Junc.
Las Vegas



Topographic Map Symbols

- Primary highway, hard surface
- Secondary highway, hard surface
- Light duty road, principal street, hard or improved surface
- Other road or access, road
- Route marker: Interstate, U. S. State
- Railroad: standard gage; narrow gage
- Bridge: overpass; underpass
- Tunnel: road; railroad
- Rail stop area, locality, elevation
- Airport: landing field; landing strip
- National boundary
- County boundary
- National or State reservation boundary
- Land grant boundary
- U. S. public lands survey: range, township, section
- Range, township; section line: protracted
- Power transmission line, pipeline
- Dam; dam with lock
- Cemetery, building
- Wellhead; water well; spring
- Mine shaft; adit or cave; mine, quarry; gravel pit
- Campground; picnic area; U. S. location monument
- Ruin; cliff dwelling
- Distorted surface: strip mine, lava, sand
- Contours: index; intermediate; supplementary
- Bathymetric contours: index; intermediate
- Stream, lake: perennial; intermittent
- Rapids, large and small; falls, large and small
- Area to be submerged; marsh, swamp
- Land subject to controlled inundation; woodland
- Sodic meadow
- Orchard; vineyard