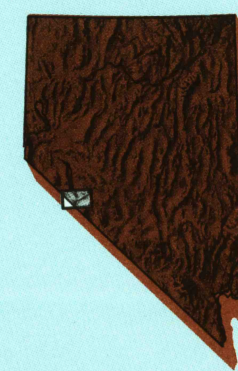


Excelsior Mts.

NEVADA—CALIFORNIA

1:100 000-scale metric topographic map

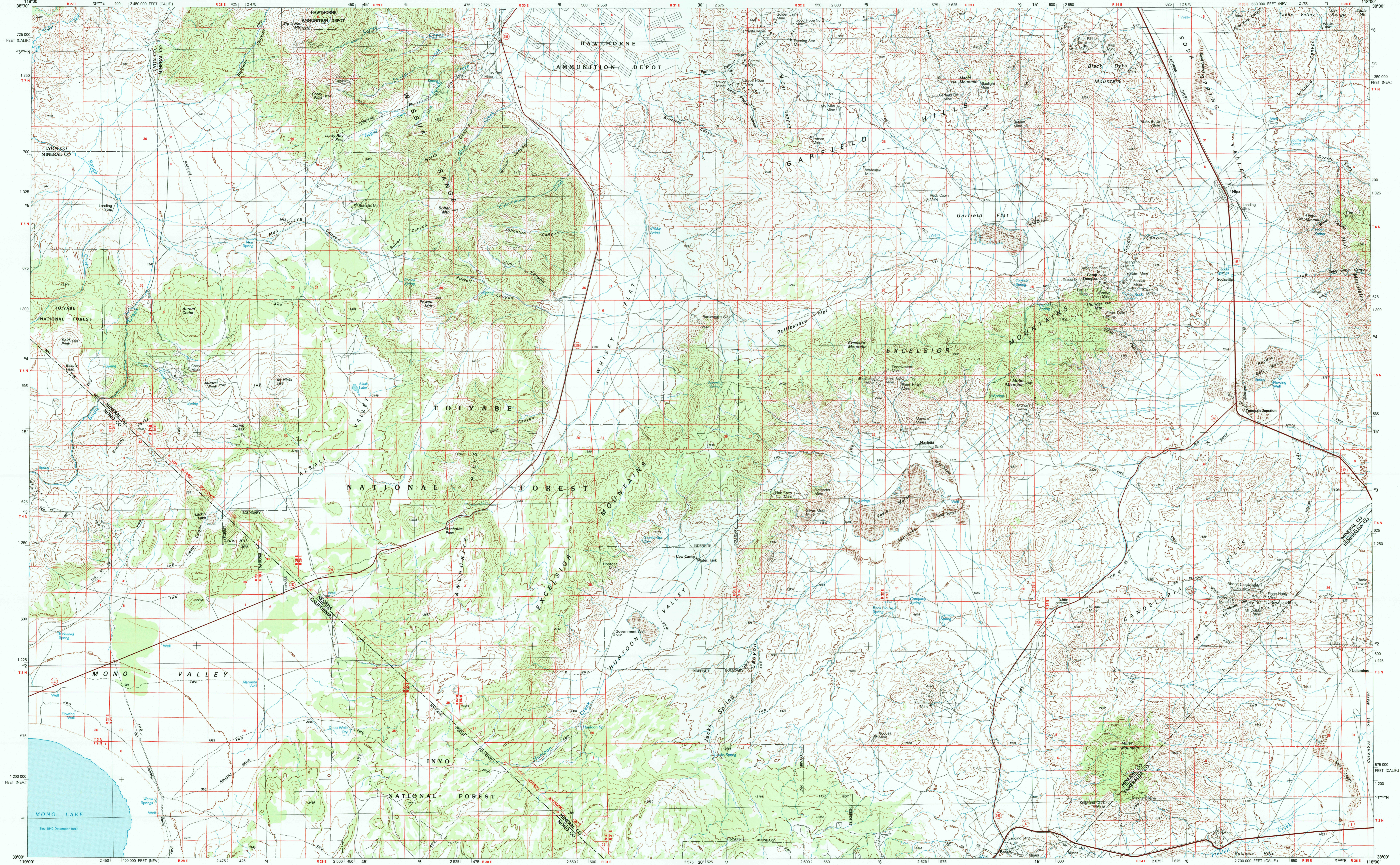


30 X 60 MINUTE QUADRANGLE SHOWING

- Contours and elevations in meters
- Highways, roads and other manmade structures
- Water features
- Woodland areas
- Geographic names

GEOLOGICAL SURVEY

1985



Produced by the United States Geological Survey in cooperation with the Nevada Bureau of Mines and Geology

Compiled from USGS 1:24 000 and 1:62 500-scale topographic maps dated 1955-1982. Planimetry revised from aerial photographs taken 1980 and other source data. Revised information not field checked. Map edited 1985.

Projection and 10 000-meter grid, zone 11, Universal Transverse Mercator. 25 000-foot grid ticks based on Nevada coordinate system, west zone and California coordinate system, zone 3 1927 North American Datum. To place on the predicted North American Datum 1983 move the projection lines 11 meters north and 84 meters east.

There may be private inholdings within the boundaries of the National or State Reservations shown on this map. Where controlled, land lines have not been established or are not shown because of insufficient data.

CONTOUR INTERVAL 50 METERS
NATIONAL GRID: VERTICAL DATUM OF 1929

THIS MAP COMPLIES WITH NATIONAL MAP ACCURACY STANDARDS

FOR SALE BY U.S. GEOLOGICAL SURVEY, P.O. BOX 25286, DENVER, COLORADO, 80225

CONVERSION TABLE		DECLINATION DIAGRAM		ADJOINING MAPS		
Meters	Feet	MAGNETIC DECLINATION		1	2	3
2	6.5617			1	2	3
4	13.1234			4	5	6
6	19.6851			7	8	
8	26.2468					
10	32.8085					
12	39.3702					
14	45.9319					
16	52.4936					
18	59.0553					
20	65.6170					

To convert meters to feet multiply by 3.2808
To convert feet to meters multiply by 0.3048

ITM grid convergence (CM) and 100 magnetic declination (MM) at center of map. Diagram is approximate.

1	Smith Valley
2	Walker Lake
3	Low Valley
4	Bradford
5	Tomopah
6	Yonah Valley
7	Benton Range
8	Goldfield

RECEIVED DEC 31 2000

USGS NMD HISTORICAL MAP ARCHIVES

ISBN 0-607-40242-3
780607402421

Topographic Map Symbols

Primary highway, hard surface	
Secondary highway, hard surface	
Light duty road, principal street, hard or improved surface	
Other road or street; trail	
Route marker: Interstate; U. S. State	
Railroad: standard gauge, narrow gauge	
Ridge, overpass, underpass	
Tunnel: road, railroad	
Built up area; locality; elevation	
Airport; landing field; landing strip	
National boundary	
State boundary	
County boundary	
National or State reservation boundary	
Land grant boundary	
U. S. public lands survey: range, township, section	
Range, township, section line: protracted	
Power transmission line; pipeline	
Dam; dam with lock	
Cemetery; building	
Windmill; water well; spring	
Mine shaft; adit or cave; mine, quarry; gravel pit	
Campground; picnic area; U. S. location monument	
Rail; cliff dwelling; ruin	
Disturbed surface: strip mine, lava; sand	
Contours: index; intermediate; supplementary	
Bathymetric contours: index; intermediate	
Stream, lake; perennial; intermittent	
Reefs, large and small; bays, large and small	
Area to be submerged; marsh, swamp	
Land subject to controlled inundation; woodland	
Scrub; mangrove	
Orchard; vineyard	