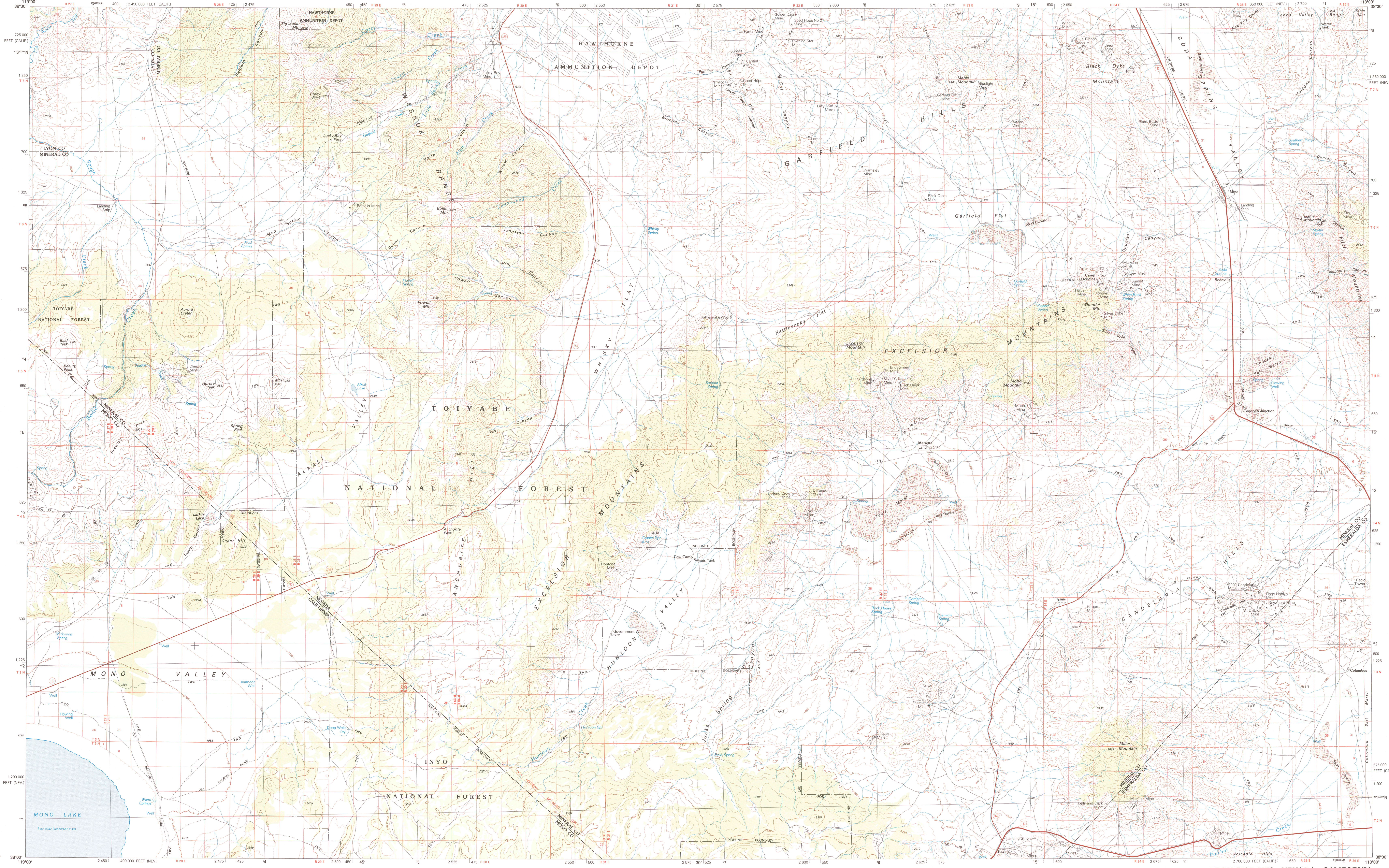


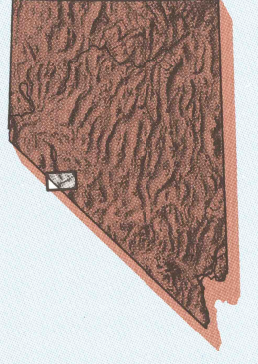
EXCELSIOR MTS., NEVADA—CALIFORNIA

30X60 MINUTE SERIES (TOPOGRAPHIC)



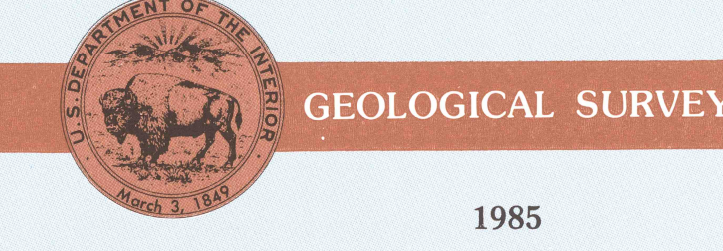
Excelsior Mts. NEVADA—CALIFORNIA

1:100 000-scale metric topographic map



30 X 60 MINUTE QUADRANGLE SHOWING

- Contours and elevations in meters
- Highways, roads and other manmade structures
- Water features
- Woodland areas
- Geographic names



1985

Produced by the United States Geological Survey in cooperation with the Nevada Bureau of Mines and Geology

Compiled from USGS 1:24 000 and 1:62 500-scale topographic maps dated 1955-1982. Planimetry revised from aerial photographs taken 1980 and other source data. Revised information not field checked. Map edited 1985.

Projection and 10 000-meter grid, zone 11, Universal Transverse Mercator.

25 000-foot grid ticks based on Nevada coordinate system, west zone and California coordinate system, zone 3 1927 North American Datum.

To place on the predicted North American Datum 1983 move the projection lines 11 meters north and 84 meters east.

There may be private inholdings within the boundaries of the National or State reservations shown on this map. Where omitted, land lines have not been established or are not shown because of insufficient data.

CONTOUR INTERVAL 50 METERS NATIONAL GEODETIC VERTICAL DATUM OF 1929

THIS MAP COMPLIES WITH NATIONAL MAP ACCURACY STANDARDS

Meters	Feet
1	3.2808
2	6.5617
3	9.8425
4	13.1234
5	16.4043
6	19.6852
7	22.9661
8	26.2470
9	29.5279
10	32.8084

Declination	Diagram
0°	
10°	
15°	

Adjoining Maps
1
2
3
4
5
6
7
8

FOR SALE BY U.S. GEOLOGICAL SURVEY, DENVER, COLORADO 80225 OR RESTON, VIRGINIA 22092



Topographic Map Symbols

Primary highway, hard surface	
Secondary highway, hard surface	
Light duty road, principal street, hard or improved surface	
Other road or street, trail	
Route marker: Interstate, U. S. State	
Railroad: standard gauge, narrow gauge	
Bridge: overpass, underpass	
Tunnel: road, railroad	
Built up area, locality, elevation	
Airport: landing field, landing strip	
National boundary	
State boundary	
County boundary	
National or State reservation boundary	
Land grant boundary	
U. S. public lands survey: range, township, section	
Range, township, section line: protected	
Power transmission line, pipeline	
Dam, dam with lock	
Cemetery, building	
Windmill, water well, spring	
Mine shaft, mill or cave, mine, quarry, gravel pit	
Campground, picnic area, U. S. location monument	
Ruins, cliff dwelling	
Distorted surface: strip mine, lava, sand	
Contours: index, intermediate, supplementary	
Bathymetric contours: index, intermediate	
Stream, lake, perennial, intermittent	
Rapids, large and small; falls, large and small	
Area to be submerged; marsh, swamp	
Land subject to controlled inundation; woodland	
Sand, mangrove	
Orchard; vineyard	

A pamphlet describing topographic maps is available on request