

INDIAN SPRINGS, NEVADA

30X60 MINUTE SERIES (TOPOGRAPHIC)

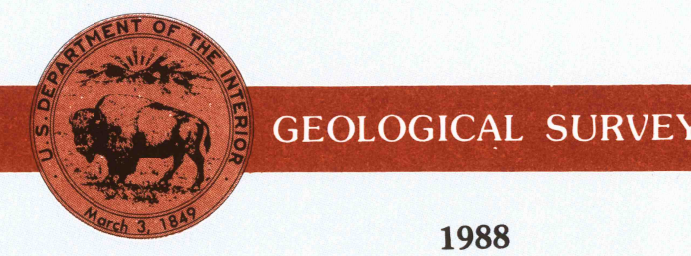
Indian Springs NEVADA

1:100 000-scale metric topographic map



30 X 60 MINUTE QUADRANGLE SHOWING

- Contours and elevations in meters
- Highways, roads and other manmade structures
- Water features
- Woodland areas
- Geographic names



Produced by the United States Geological Survey in cooperation with the Nevada Bureau of Mines and Geology

Compiled from USGS 1:24 000-scale topographic maps dated 1961-1987. Planimetry revised from aerial photographs taken 1963 and other source data. Map edited 1988.

Projection and 10,000-meter grid, zone 11 Universal Transverse Mercator

25 000-foot grid ticks based on Nevada coordinate system, east and central zones, 1927 North American Datum

To place on the predicted North American Datum 1983 move the projection lines 7 meters north and 76 meters east

Where omitted land lines are not shown because of insufficient data

There may be private inholdings within the boundaries of the National or State reservations shown on this map

CONTOUR INTERVAL 50 METERS  
 SUPPLEMENTARY CONTOUR INTERVAL 10 METERS  
 NATIONAL GEODETIC VERTICAL DATUM OF 1929  
 ELEVATIONS SHOWN TO THE NEAREST METER

THIS MAP COMPLIES WITH NATIONAL MAP ACCURACY STANDARDS

FOR SALE BY U.S. GEOLOGICAL SURVEY,  
 P.O. BOX 25286, DENVER, COLORADO, 80225

Meters	Feet
1	3.2808
2	6.5617
3	9.8425
4	13.1234
5	16.4043
6	19.6852
7	22.9661
8	26.2470
9	29.5279
10	32.8088

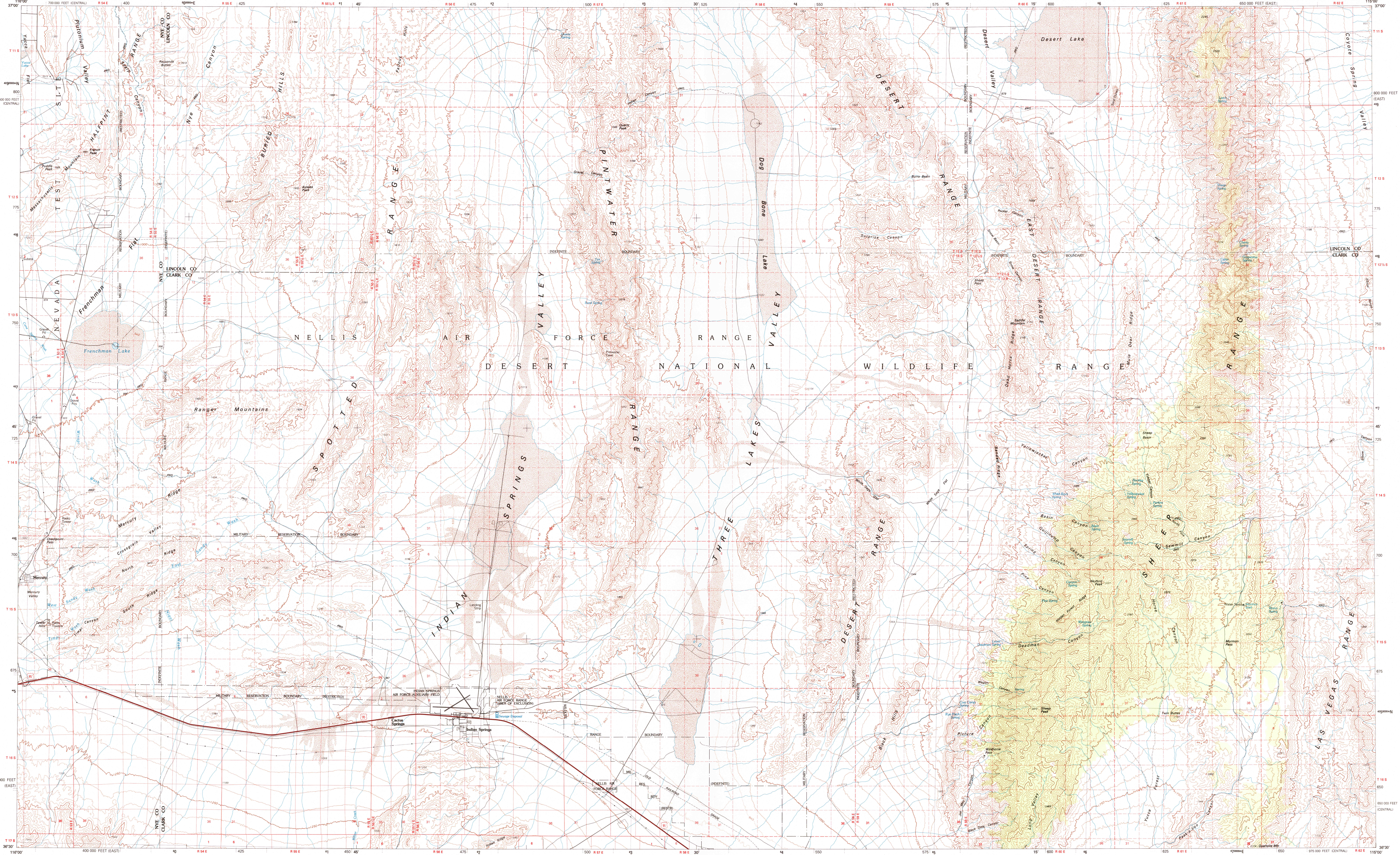
To convert meters to feet multiply by 3.2808  
 To convert feet to meters multiply by 0.3048

DECLINATION DIAGRAM	ADJOINING MAPS									
<p>UTM grid convergence (EN) and 1988 magnetic declination (MD) at center of map. Diagram is approximate.</p>	<table border="1"> <tr><td>1</td><td>2</td><td>3</td></tr> <tr><td>4</td><td>5</td><td>6</td></tr> <tr><td>7</td><td>8</td><td></td></tr> </table> <p>1 Pahute Mesa            2 Pahrengat Range            3 Clover Mountains            4 Death Valley Junction            5 Las Vegas            6 Lake Mead</p>	1	2	3	4	5	6	7	8	
1	2	3								
4	5	6								
7	8									



Topographic Map Symbols

- Primary highway, hard surface
- Secondary highway, hard surface
- Light duty road, principal street, hard or improved surface
- Other road or street, trail
- Route marker: Interstate, U. S.; State
- Railroad: standard gauge, narrow gauge
- Bridge: overpass, underpass
- Tunnel: rock, railroad
- Built up area, locality, elevation
- Airport: landing field, landing strip
- National boundary
- State boundary
- County boundary
- National or State reservation boundary
- Land grant boundary
- U. S. public lands survey: range, township; section
- Range, township; section line: protracted
- Power transmission line: pipeline
- Dam, dam with lock
- Cemetery, building
- Windmill; water well; spring
- Mine shaft; adit or cave; mine, quarry; gravel pit
- Rain; cliff; awning; bench, masonry
- Disturbed surface: strip mine, levee, sand
- Contours: index; intermediate; supplementary
- Bathymetric contours: index; intermediate
- Stream, lake: perennial; intermittent
- Rapids, large and small; falls, large and small
- Area to be reclaimed; marsh, swamp
- Land subject to controlled inundation; woodland
- Scrub; mangrove
- Orchard; vineyard



SCALE 1:100 000  
 1 CENTIMETER ON THE MAP REPRESENTS 1 KILOMETER ON THE GROUND  
 CONTOUR INTERVAL, 50 METERS  
 SUPPLEMENTARY CONTOUR INTERVAL 10 METERS

INDIAN SPRINGS, NEVADA  
 36115-E1-TM-100  
 1988

A pamphlet describing topographic maps is available on request.