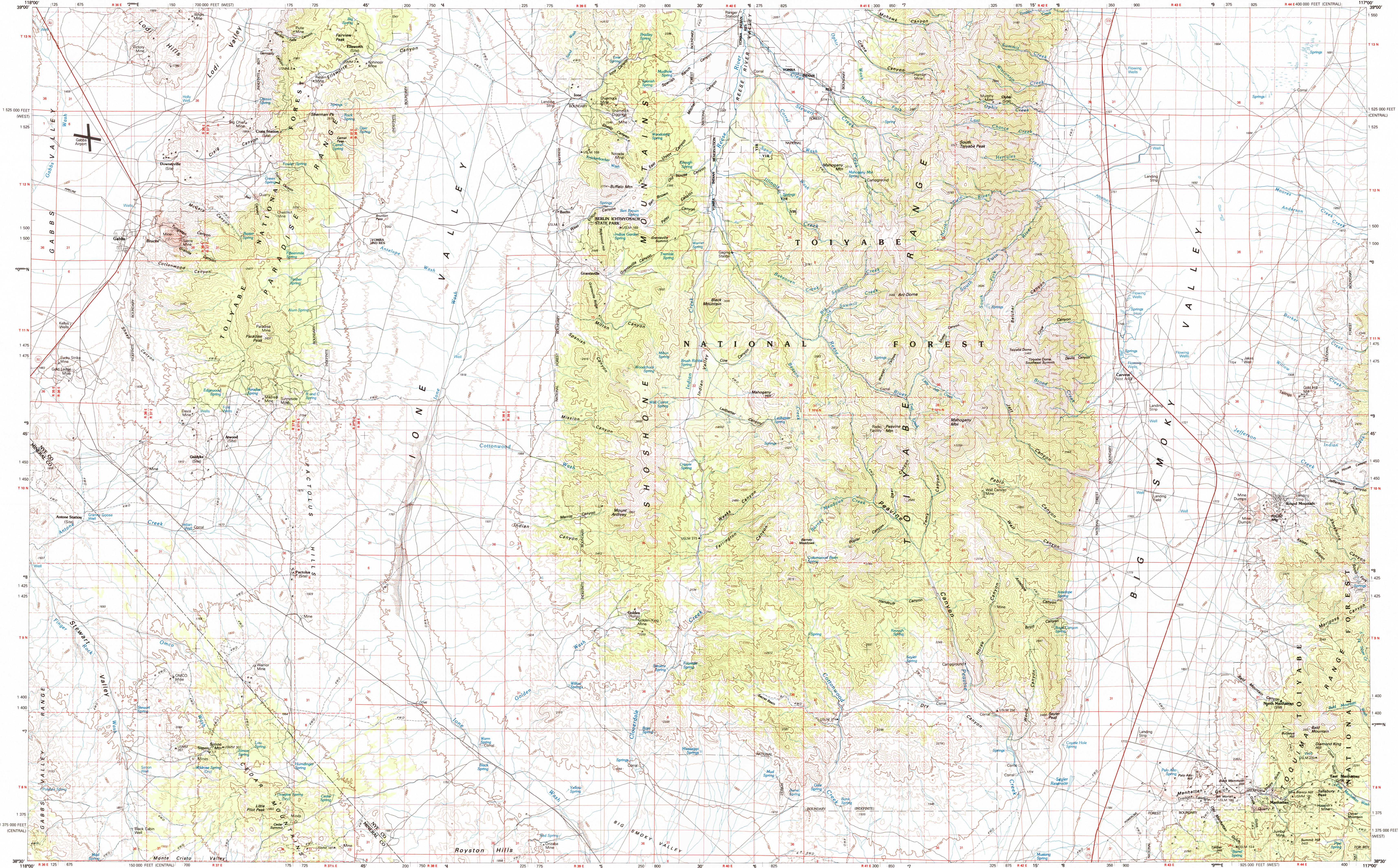


IONE VALLEY, NEVADA

30X60 MINUTE SERIES (TOPOGRAPHIC)

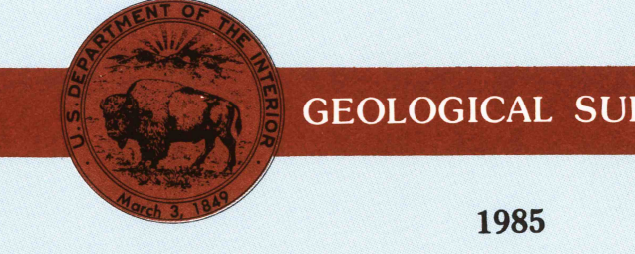


# Ione Valley NEVADA

1:100 000-scale metric topographic map

30 X 60 MINUTE QUADRANGLE SHOWING

- Contours and elevations in meters
- Highways, roads and other manmade structures
- Water features
- Woodland areas
- Geographic names



Produced by the United States Geological Survey in cooperation with the Nevada Bureau of Mines and Geology

Compiled from USGS 1:24 000 and 1:62 500-scale topographic maps dated 1948-1980. Planimetry revised from aerial photographs taken 1980 and other source data. Revised information not field checked. Map edited 1985.

Projection and 10 000-meter grid, zone 11. Universal Transverse Mercator. 25 000-foot grid ticks based on Nevada coordinate system, central and west zones. 1927 North American Datum. To place on the predicted North American Datum 1983 move the projection lines 11 meters north and 81 meters east.

There may be private holdings within the boundaries of the National or State reservations shown on this map. Where omitted, land lines have not been established or are not shown because of insufficient data.

CONTOUR INTERVAL 50 METERS NATIONAL GEODETIC VERTICAL DATUM OF 1929

THIS MAP COMPLIES WITH NATIONAL MAP ACCURACY STANDARDS

CONVERSION TABLE		DECLINATION DIAGRAM		ADJOINING MAPS	
Meters	Feet	GN	MN	1	2
1	3.2808	0°	15°	1	2
2	6.5617	30°	30°	3	3
3	9.8425	45°	45°	4	4
4	13.1234	60°	60°	5	5
5	16.4042	75°	75°	6	6
6	19.6850	90°	90°	7	7
7	22.9659			8	8
8	26.2467				
9	29.5275				
10	32.8084				

To convert meters to feet multiply by 3.2808  
To convert feet to meters multiply by 0.3048

UTM grid convergence (GN) and 1983 magnetic declination (MN) in degrees  
To convert feet to meters multiply by 0.3048  
Diagram is approximate

1	Fallon
2	Smith Creek Valley
3	Summit Mountain
4	Walker Lake
5	McJannet
6	Excelsior Mts.
7	Tropic
8	Warm Springs

FOR SALE BY U. S. GEOLOGICAL SURVEY, DENVER, COLORADO 80225 OR RESTON, VIRGINIA 22092

### Topographic Map Symbols

- Primary highway, hard surface
- Secondary highway, hard surface
- Light duty rd., principal street, hard or improved surface
- Other road or street, trail
- Route marker: Interstate, U. S. State
- Railroad: standard gage; narrow gage
- Bridge: overpass; underpass
- Tunnel: road; railroad
- Built up area, locality, elevation
- Airport: landing field; landing strip
- National boundary
- State boundary
- County boundary
- National or State reservation boundary
- Land grant boundary
- U. S. public lands survey: range, township, section
- Range, township; section line: protracted
- Power transmission line: pipeline
- Dam: dam with lock
- Cemetery; building
- Well: water well; spring
- Mine shaft; adit or cave; mine, quarry; gravel pit
- Campground; picnic area; U. S. location monument
- Ruins: cliff dwelling
- Distoral surface: strip mine, lava, sand
- Contours: index; intermediate; supplementary
- Bathymetric contours: index; intermediate
- Stream, lake: perennial; intermittent
- Rapids, large and small; falls, large and small
- Area to be colonized: marsh, swamp
- Land subject to controlled sandstone; woodland
- Scrub; meadow
- Orchard; vineyard

SCALE 1:100 000

IONE VALLEY, NEVADA 38117-E1-TM-100

1985