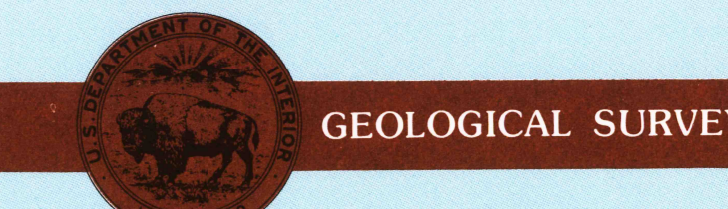


30 X 60 MINUTE QUADRANGLE SHOWING

- Contours and elevations in meters
- Highways, roads and other manmade structures
- Water features
- Woodland areas
- Geographic names



Produced by the United States Geological Survey in cooperation with the Nevada Bureau of Mines and Geology

Compiled from USGS 1:24 000 and 1:62 500-scale topographic maps dated 1961-1982. Planimetry revised from aerial photographs taken 1980 and other source data. Revised information not field checked. Map edited 1985

Projection and 10 000-meter grid, zone 11. Universal Transverse Mercator. 25 000-foot grid ticks based on Nevada coordinate system, west zone, 1927 North American Datum. To place on the predicted North American Datum 1983 move the projection lines 15 meters north and 83 meters east. There may be private inholdings within the boundaries of the National or State reservations shown on this map.

CONTOUR INTERVAL 50 METERS NATIONAL GEODETIC VERTICAL DATUM OF 1929

THIS MAP COMPLIES WITH NATIONAL MAP ACCURACY STANDARDS

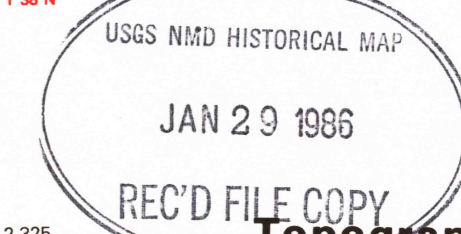
CONVERSION TABLE		DECLINATION DIAGRAM		ADJOINING MAPS		
Meters	Feet	GN	MN	1	2	3
1	3.2808		17° 30' 00" MILES	4	5	6
2	6.5617			1	2	3
3	9.8425			4	5	6
4	13.1234			7	8	9
5	16.4042					
6	19.6850					
7	22.9659					
8	26.2467					
9	29.5275					

To convert meters to feet multiply by 3.2808
To convert feet to meters multiply by 0.3048

UTM grid convergence (GN) and 1985 magnetic declination (MN) at center of map (Diagram is approximate)

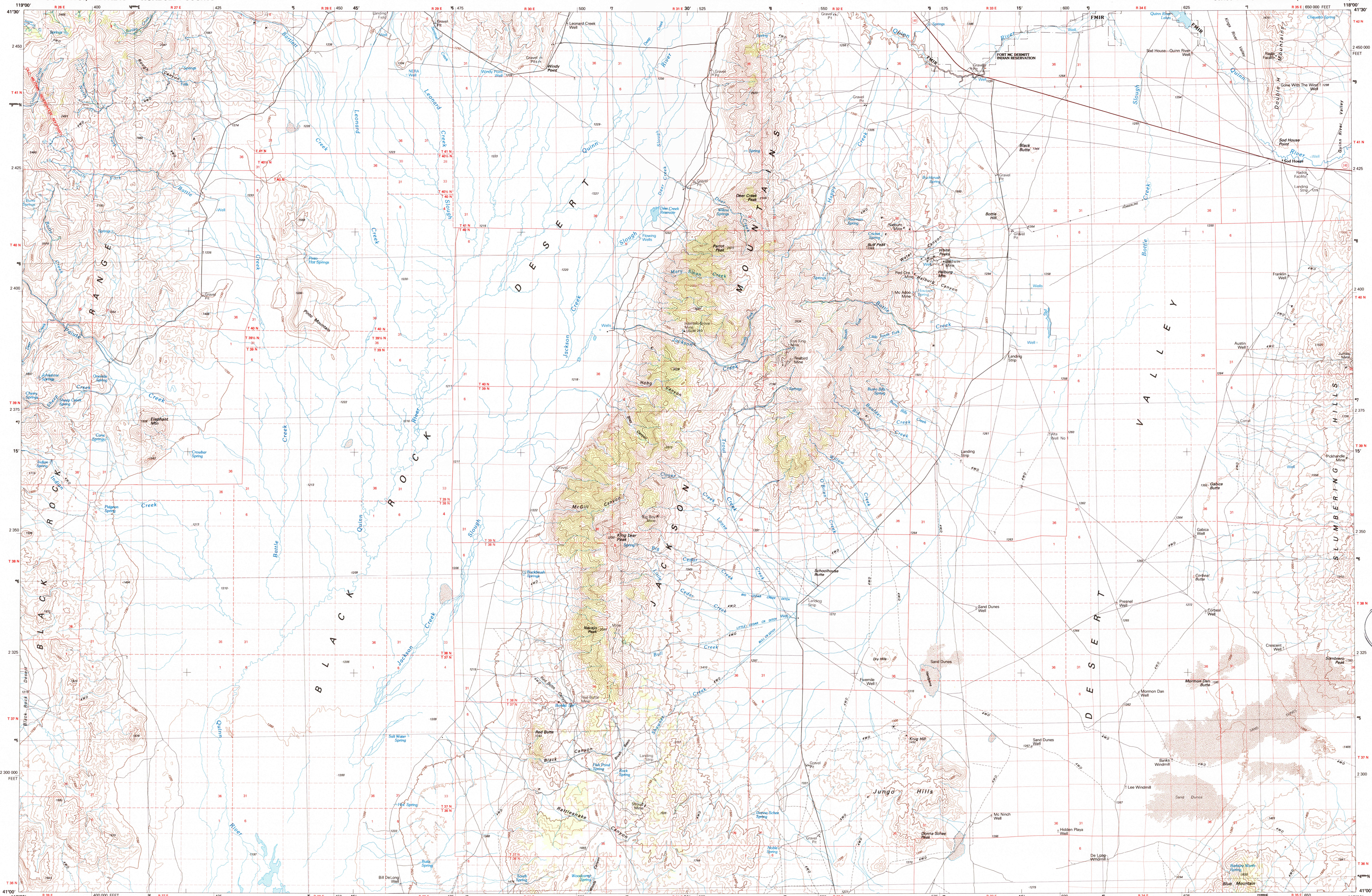
Map Symbols:
 1. Wash
 2. Quinn River Valley
 3. High Rock Canyon
 4. Osgood Mts.
 5. Eugene Mts.
 6. Winnemucca

FOR SALE BY U. S. GEOLOGICAL SURVEY, DENVER, COLORADO 80225 OR RESTON, VIRGINIA 22092



Topographic Map Symbols

- Primary highway, hard surface
- Secondary highway, hard surface
- Light duty road, principal street, hard or improved surface
- Other road or street, trail
- Road marker: Interstate, U. S., State
- Railroad: standard gage; narrow gage
- Bridge, overpass, underpass
- Tunnel: road, railroad
- Built up area; locality, elevation
- Airport, landing field, landing strip
- National boundary
- State boundary
- County boundary
- National or State reservation boundary
- Land grant boundary
- U. S. public lands survey: range, township, section
- Range, township, section line, protected
- Power transmission line; pipeline
- Dam; dam with lock
- Cemetery; building
- Windmill; water well; spring
- Mine shaft; adit or cave mine; quarry pit
- Campground; picnic area; U. S. location monument
- Ruins; cliff dwelling
- Distorted surface: strip mine, lava, sand
- Contours: index; intermediate; supplementary
- Bathymetric contours: index; intermediate
- Stream, lake: perennial; intermittent
- Rapids, large and small; falls, large and small
- Area to be submerged; marsh, swamp
- Land subject to controlled inundation; woodland
- Scrub; mangrove
- Overlaid; viewd



SCALE 1:100 000 1 CENTIMETER ON THE MAP REPRESENTS 1 KILOMETER ON THE GROUND CONTOUR INTERVAL 50 METERS

JACKSON MTS., NEVADA 41118-A1-TM-100