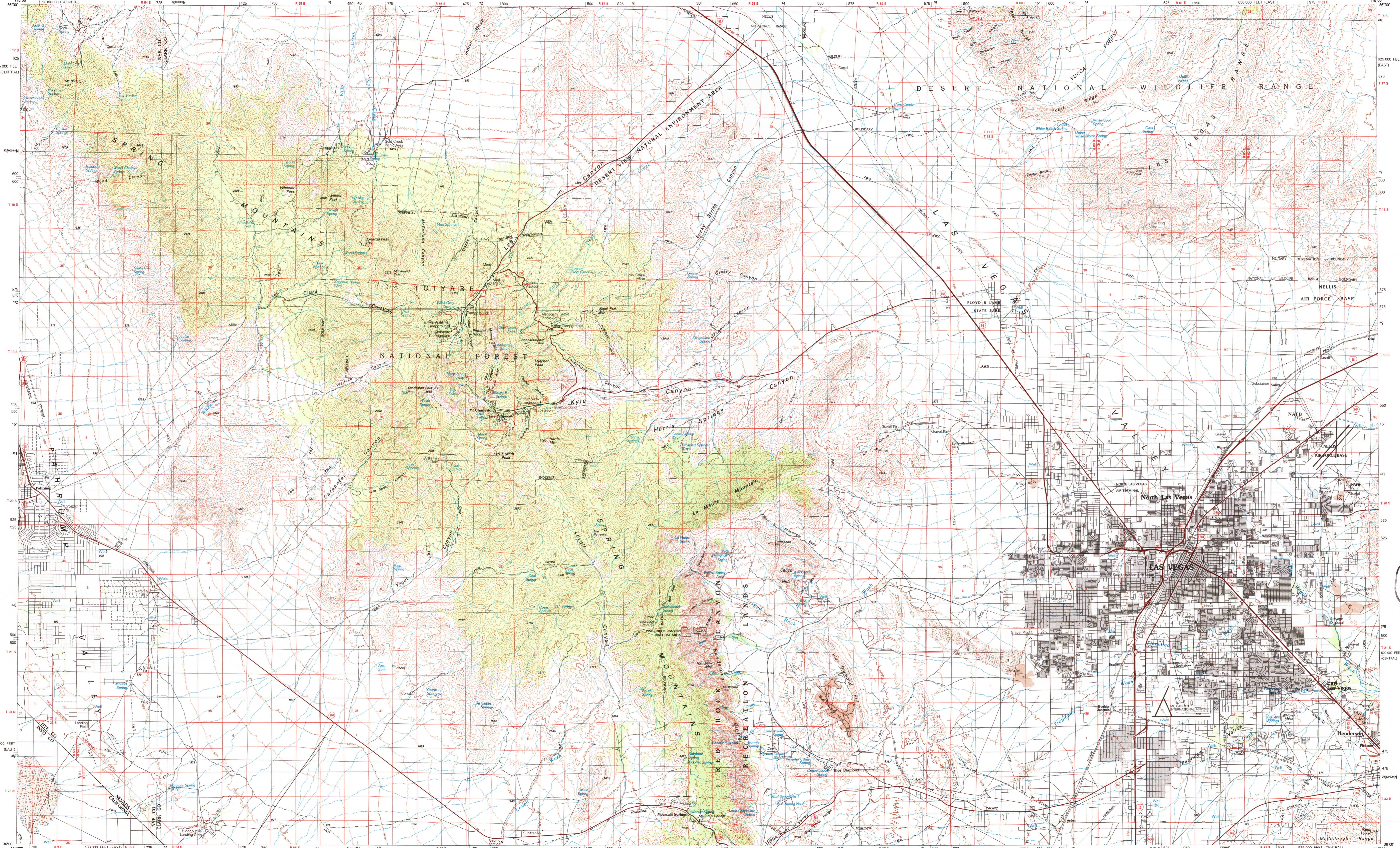


LAS VEGAS, NEVADA—CALIFORNIA

30 X 60 MINUTE SERIES (TOPOGRAPHIC)



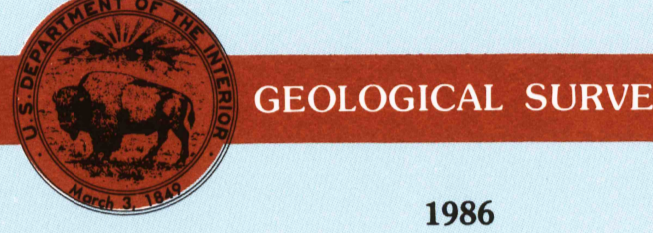
Las Vegas NEVADA—CALIFORNIA

1:100 000-scale metric topographic map



30 X 60 MINUTE QUADRANGLE SHOWING

- Contours and elevations in meters
Highways, roads and other manmade structures
Water features
Woodland areas
Geographic names



Produced by the United States Geological Survey
Compiled from USGS 1:24 000 and 1:62 500-scale topographic maps dated 1952-1984.

CONTOUR INTERVAL 50 METERS
NATIONAL GEODETIC VERTICAL DATUM OF 1929

THIS MAP COMPLIES WITH NATIONAL MAP ACCURACY STANDARDS
FOR SALE BY U.S. GEOLOGICAL SURVEY, P.O. BOX 23286, DENVER, COLORADO, 80225

Table with 3 columns: METERS, FEET, and ADJOINING MAPS. Includes conversion factors and a list of adjacent map sheets.



Topographic Map Symbols

- Primary highway, hard surface
Secondary highway, hard surface
Light duty road, principal street, hard or improved surface
Other road or street, trail
Route marker: Interstate, U. S., State