

**Osgood Mts. NEVADA**

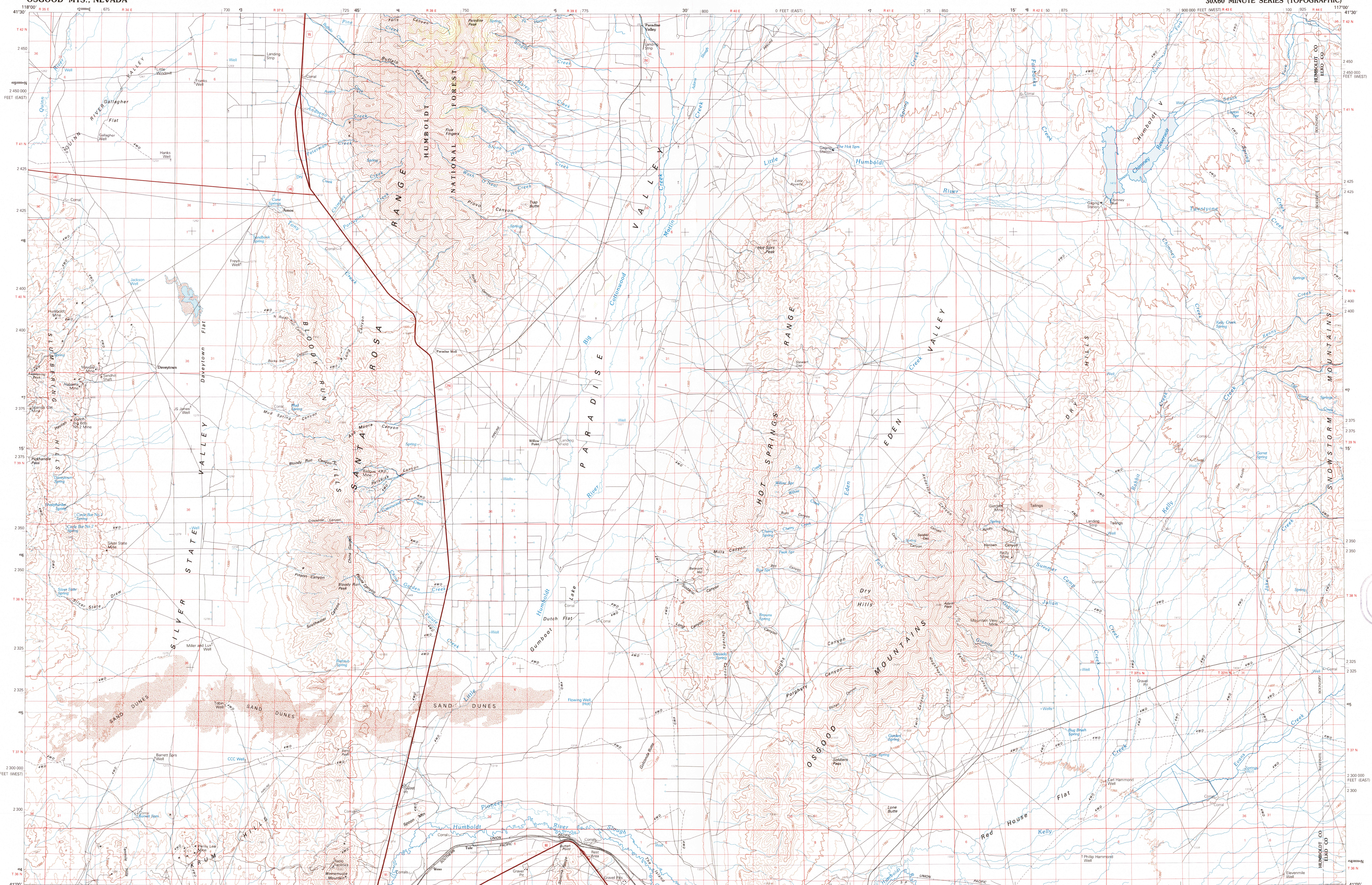
1:100 000-scale metric topographic map

30 X 60 MINUTE QUADRANGLE SHOWING

- Contours and elevations in meters
- Highways, roads and other manmade structures
- Water features
- Woodland areas
- Geographic names

GEOLOGICAL SURVEY

1985



Produced by the United States Geological Survey in cooperation with the Nevada Bureau of Mines and Geology

Compiled from USGS 1:24 000 and 1:62 500-scale topographic maps dated 1945-1983. Planimetry revised from aerial photographs taken 1980 and other source data. Revised information not field checked. Map edited 1985

Projection and 10 000-meter grid, zone 11. Universal Transverse Mercator 25 000-foot grid ticks based on Nevada coordinate system, west and east zones, 1927 North American Datum. To place on the predicted North American Datum 1983 move the projection lines 14 meters north and 80 meters east

There may be private inholdings within the boundaries of the National or State reservations shown on this map

CONTOUR INTERVAL 50 METERS  
NATIONAL GEODETIC VERTICAL DATUM OF 1929

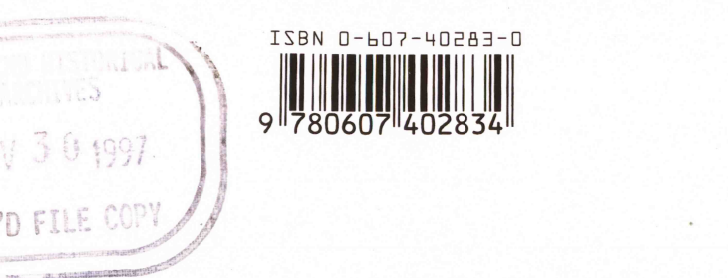
FOR SALE BY U.S. GEOLOGICAL SURVEY,  
P.O. BOX 25286, DENVER, COLORADO, 80225

Meters	Feet
1	3.2808
2	6.5617
3	9.8425
4	13.1234
5	16.4042
6	19.6850
7	22.9659
8	26.2467
9	29.5276
10	32.8084

To convert meters to feet multiply by 3.2808  
To convert feet to meters multiply by 0.3048

UTM grid convergence (GM) and 1983 magnetic declination (MD) at center of map. Diagram is approximate

ADJOINING MAPS	1	2	3
1	Denio		
2	Quinn River Valley		
3	Red Run Mts.		
4	Jackson Mountains		
5	Tennison		
6	Engene Mountains		
7	Winnemucca		
8	Battle Mountain		



**Topographic Map Symbols**

Primary highway, hard surface	
Secondary highway, hard surface	
Light duty road, private street, hard or improved surface	
Other road or street, trail	
Route marker: Interstate: U. S. State	
Railroad: standard gage; narrow gage	
Bridge: overpass; underpass	
Tunnel; road; railroad	
Built up area; locality; elevation	
Airport: landing field; landing strip	
National boundary	
State boundary	
County boundary	
National or State reservation boundary	
Land grant boundary	
U. S. public lands survey: range, township; section	
Range, township; section line: protracted	
Power transmission line; pipeline	
Dam; dam with lock	
Cemetery; building	
Windmill; water well; spring	
Mine shaft; adit or cave; mine, quarry; gravel pit	
Campground; picnic area; U. S. location monument	
Ruin; cliff dwelling	
Distorted surface; strip mine, lava, sand	
Contours: index, intermediate, supplementary	
Bathymetric contours: index, intermediate	
Stream, lake: perennial; intermittent	
Rapids, large and small; falls, large and small	
Area to be submerged; marsh, swamp	
Land subject to controlled inundation; woodland	
Scrub, mangrove	
Orchard; vineyard	

SCALE 1:100 000  
1 CENTIMETER ON THE MAP REPRESENTS 1 KILOMETER ON THE GROUND  
CONTOUR INTERVAL 50 METERS

OSGOOD MTS., NEVADA  
41117-A1-TM-100