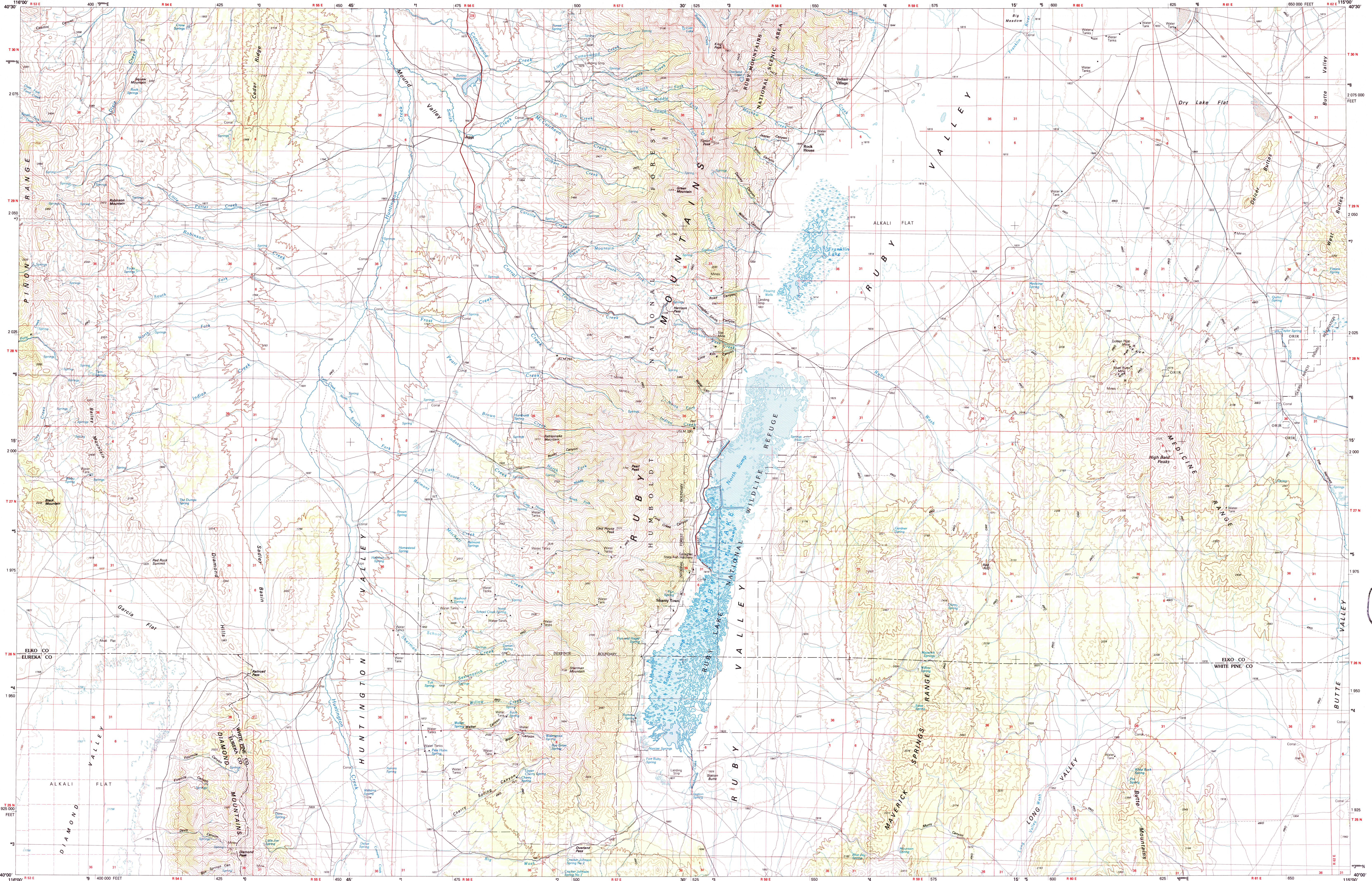


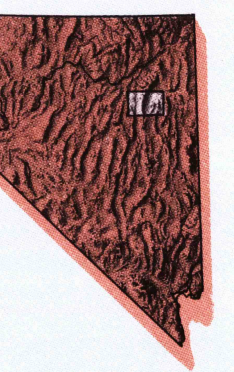
RUBY LAKE, NEVADA

30X60 MINUTE SERIES (TOPOGRAPHIC)



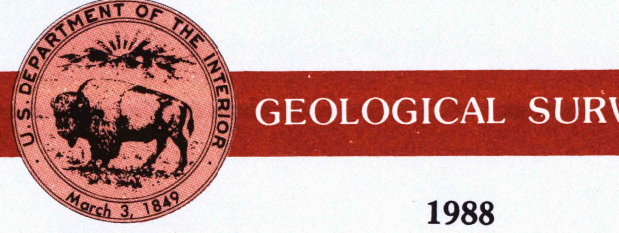
Ruby Lake NEVADA

1:100 000-scale metric topographic map



30 X 60 MINUTE QUADRANGLE SHOWING

- Contours and elevations in meters
- Highways, roads and other manmade structures
- Water features
- Woodland areas
- Geographic names



1988

Produced by the United States Geological Survey in cooperation with the Nevada Bureau of Mines and Geology

Compiled from USGS 1:24 000-scale topographic maps dated 1968-1985. Planimetry revised from aerial photographs taken 1980 and other source data. Revised information not field checked. Map edited 1988.

Projection and 10 000-meter grid, zone 11 Universal Transverse Mercator. 25 000-foot grid ticks based on Nevada coordinate system east zone, 1927 North American Datum. To place on the predicted North American Datum 1983 move the projection lines 12 meters north and 75 meters east. Where omitted, land lines have not been established. There may be private inholdings within the boundaries of the National or State reservations shown on this map.

CONTOUR INTERVAL 50 METERS
SUPPLEMENTARY CONTOUR INTERVAL 10 METERS
NATIONAL GEODETIC VERTICAL DATUM OF 1929
ELEVATIONS SHOWN TO THE NEAREST METER

THIS MAP COMPLIES WITH NATIONAL MAP ACCURACY STANDARDS

FOR SALE BY U.S. GEOLOGICAL SURVEY, P.O. BOX 25286, DENVER, COLORADO, 80225

Meters	Feet
1	3.2808
2	6.5617
3	9.8425
4	13.1234
5	16.4042
6	19.6850
7	22.9659
8	26.2467
9	29.5275
10	32.8084

To convert meters to feet multiply by 3.2809
To convert feet to meters multiply by 0.3048

UTM grid convergence (G) and 1983 magnetic declination (M) at center of map. Diagram is approximate.

ADJOINING MAPS	1	2	3
1 Battle Mountain			
2 Elko			
3 Wendover			
4 Crescent Valley			
5 Centerville			
6 Mesquite Park			
7 Mountain Lake			
8 Kern Mountains			

ISBN 0-607-41092-2
9 780607 410921

APR 30 1997
REC'D FILE COPY

Topographic Map Symbols

- Primary highway, hard surface
- Secondary highway, hard surface
- Light duty road, principal street, hard or improved surface
- Other road or street, trail
- Route marker: Interstate; U. S. State
- Railroad: standard gage; narrow gage
- Bridge: overpass; underpass
- Tunnel: road; railroad
- Build up area: locality, elevation
- Airport: landing field; landing strip
- National boundary
- State boundary
- County boundary
- National or State reservation boundary
- Land grant boundary
- U. S. public lands survey: range, township, section
- Range, township, section line: protracted
- Power transmission line: pipeline
- Dam: dam with lock
- Cemetery: building
- Windmill; water well; spring
- Mine shaft; ast or cave; mine; quarry; gravel pit
- Campground; picnic area; U. S. location monument
- Ruin; cliff dwelling
- Dispersed surface: strip mine; lava; sand
- Contours: index; intermediate; supplementary
- Bathymetric contours: index; intermediate
- Stream, lake: perennial; intermittent
- Rapids, large and small; falls, large and small
- Area to be submerged; marsh; swamp
- Land subject to controlled mutation; woodland
- Scrub; mangrove
- Orchard; vineyard

SCALE 1:100 000
1 CENTIMETER ON THE MAP REPRESENTS 1 KILOMETER ON THE GROUND
CONTOUR INTERVAL 50 METERS
SUPPLEMENTARY CONTOUR INTERVAL 10 METERS

RUBY LAKE, NEVADA
40115-A1-TM-100
1988