

USGS
science for a changing world

Smith Valley

NEVADA—CALIFORNIA

1:100 000-scale metric topographic map

RECEIVED
MAR 3 1 2000

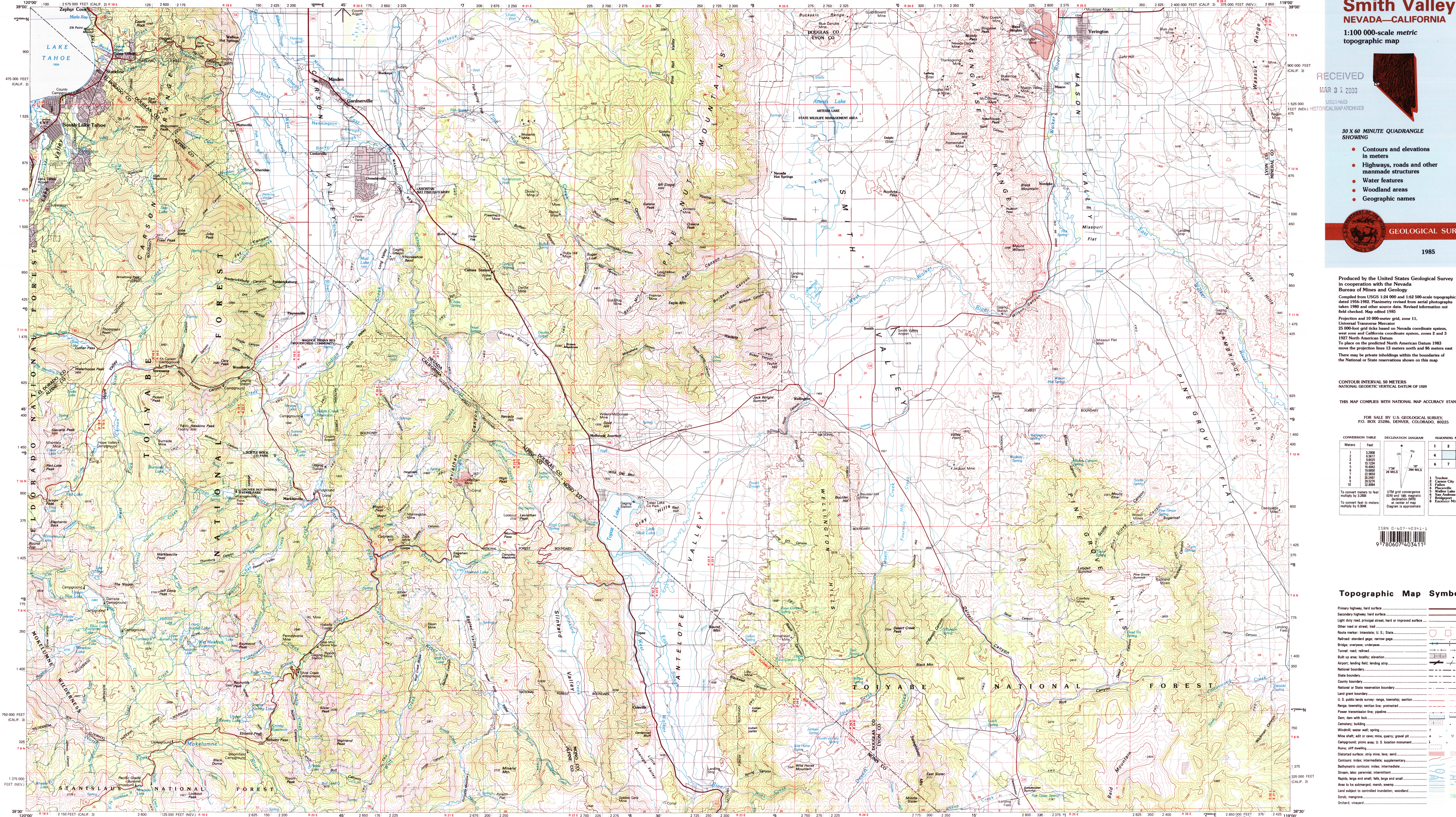
USGS NHD
HISTORICAL MAP ARCHIVES

30 X 60 MINUTE QUADRANGLE SHOWING

- Contours and elevations in meters
- Highways, roads and other manmade structures
- Water features
- Woodland areas
- Geographic names

USGS
GEOLOGICAL SURVEY

1985



Produced by the United States Geological Survey in cooperation with the Nevada Bureau of Mines and Geology

Compiled from USGS 1:24 000 and 1:62 500-scale topographic maps dated 1956-1982. Planimetry revised from aerial photographs taken 1980 and other source data. Revised information not field checked. Map edited 1985.

Projection and 10 000-meter grid, zone 11, Universal Transverse Mercator

25 000-foot grid ticks based on Nevada coordinate system, west zone and California coordinate system, zones 2 and 3 1927 North American Datum

To place on the predicted North American Datum 1983 move the projection lines 13 meters north and 86 meters east

There may be private inholdings within the boundaries of the National or State Reservations shown on this map.

CONTOUR INTERVAL 50 METERS
NATIONAL GEODETIC VERTICAL DATUM OF 1929

THIS MAP COMPLIES WITH NATIONAL MAP ACCURACY STANDARDS

FOR SALE BY U.S. GEOLOGICAL SURVEY,
P.O. BOX 25286, DENVER, COLORADO, 80225

Meters	Feet
1	3.2808
2	6.5617
3	9.8425
4	13.1234
5	16.4042
6	19.6850
7	22.9659
8	26.2467
9	29.5276
10	32.8084

To convert meters to feet multiply by 3.2808
To convert feet to meters multiply by 0.3048

UTM grid convergence (GV) and 1983 magnetic declination (MD) at center of map. Diagram is approximate.

ADJOINING MAPS	1	2	3
1	Truckee		
2	Carson City		
3	Fallon		
4	Walker Lake		
5	San Andreas		
6	Bendigo		
7	Excelsior		
8	Excelsior		



Topographic Map Symbols

- Primary highway, hard surface
- Secondary highway, hard surface
- Light duty road, gravel street, hard or improved surface
- Other road or street, track
- Road marker: Interstate, U.S., State
- Railroad: standard gage, narrow gage
- Bridge: overpass, underpass
- Tunnel: road, railroad
- Built up area: wooded, attention
- Airport: landing field, landing strip
- National boundary
- State boundary
- County boundary
- National or State reservation boundary
- Land grant boundary
- U.S. public lands survey: range, township, section
- Range, township; section line: protected
- Power transmission line: pipeline
- Dam; dam with lock
- Cemetery: building
- Windmill; water well; spring
- Mine shaft; adit or cave; mine, quarry, gravel pit
- Campground; picnic area; U.S. location monument
- Ruin; cliff dwelling
- Distorted surface: strip mine, lava, sand
- Contours: index, intermediate, supplementary
- Bathymetric contours: index, intermediate
- Stream, lake: perennial, intermittent
- Rapids, large and small; falls, large and small
- Area to be submerged; marsh, swamp
- Light subject to controlled inundation; woodland
- Scrub; mangrove
- Orchard; vineyard