



30 X 60 MINUTE QUADRANGLE SHOWING

- Contours and elevations in meters
- Highways, roads and other manmade structures
- Water features
- Woodland areas
- Geographic names



GEOLOGICAL SURVEY

1985

Produced by the United States Geological Survey in cooperation with Nevada Bureau of Mines and Geology. Compiled from USGS 1:24 000 and 1:62 500-scale topographic maps dated 1955-1980. Planimetry revised from aerial photographs taken 1980 and other source data. Revised information not field checked. Map edited 1985.

Projection and 10 000-meter grid, zone 11. Universal Transverse Mercator. 25 000-foot grid ticks based on Nevada coordinate system, west and central zones. 1927 North American Datum. To place on the predicted North American Datum 1983 move the projection lines 12 meters north and 8 meters east. There may be private inholdings within the boundaries of the National or State reservations shown on this map.

CONTOUR INTERVAL 50 METERS  
NATIONAL GEODETIC VERTICAL DATUM OF 1929

THIS MAP COMPLIES WITH NATIONAL MAP ACCURACY STANDARDS

Meters	Feet
1	3.2808
2	6.5617
3	9.8425
4	13.1234
5	16.4042
6	19.6850
7	22.9659
8	26.2467
9	29.5275
10	32.8084

To convert meters to feet multiply by 3.2808  
To convert feet to meters multiply by 0.3048

DECLINATION DIAGRAM	ADJOINING MAPS
	1 Carson City
	2 Fallon
	3 Smith Cr. Valley
	4 Smith Valley
	5 Lane Valley
	6 Bridgeport
	7 Excelsior Mts.
	8 Toiyah

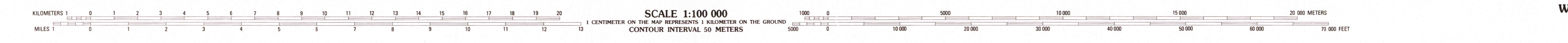
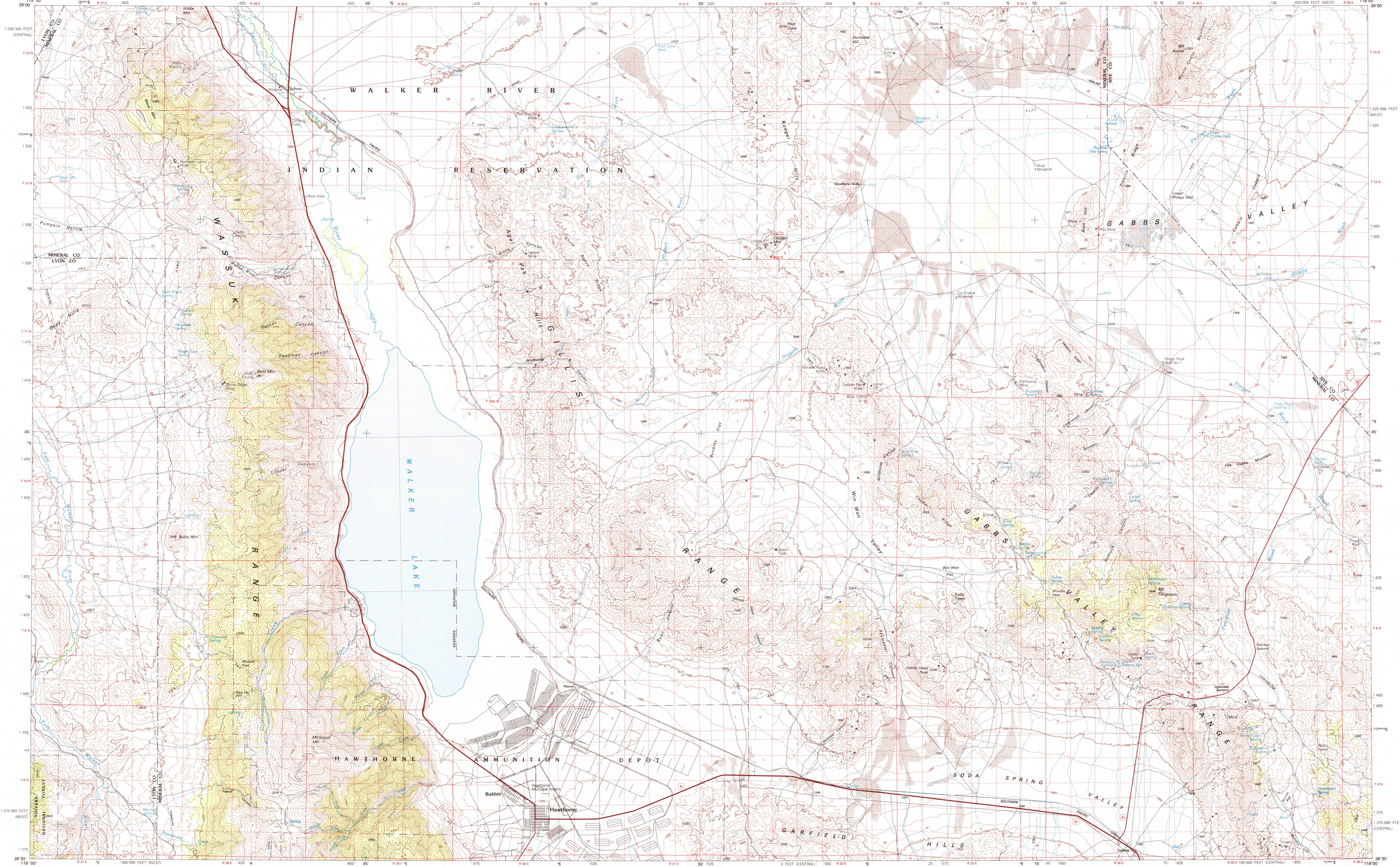
FOR SALE BY U. S. GEOLOGICAL SURVEY, DENVER, COLORADO 80225 OR RESTON, VIRGINIA 22092

Topographic Map Symbols

Primary highway, hard surface	
Secondary highway, hard surface	
Light duty road, principal street, hard or improved surface	
Other road or street, trail	
Route marker: Interstate, U. S., State	
Railroad: standard gage, narrow gage	
Bridge: overpass, underpass	
Tunnel: road, railroad	
Built up area, locality, elevation	
Airport: landing field, landing strip	
National boundary	
State boundary	
County boundary	
National or State reservation boundary	
Land grant boundary	
U. S. public lands survey: range, township, section	
Range, township, section line: protected	
Power transmission line, pipeline	
Dam: dam with lock	
Cemetery, building	
Windmill, water well, spring	
Mine shaft: adit or cave; mine, quarry, gravel pit	
Campground, picnic area, U. S. location monument	
Road, airfield	
Distorted surface: strip mine, levee, sand	
Contours: index, intermediate, supplementary	
Bathymetric contours: index, intermediate	
Stream, lake: perennial, intermittent	
Reefs, large and small; bays, large and small	
Area to be submerged, marsh, swamp	
Land subject to controlled inundation: woodland	
Scrub, mangrove	
Orchard, vineyard	

A pamphlet describing topographic maps is available on request

RETURN TO:  
USGS NATIONAL MAP ARCHIVES  
RESTON, VA 22092



WALKER LAKE, NEVADA  
38118-E1-TM-100  
1985